

Figure S1. Ribosome-binding protein 1 expression in bladder cancer tissues (T1 and T3b) and para-carcinoma tissues (magnification, x400).

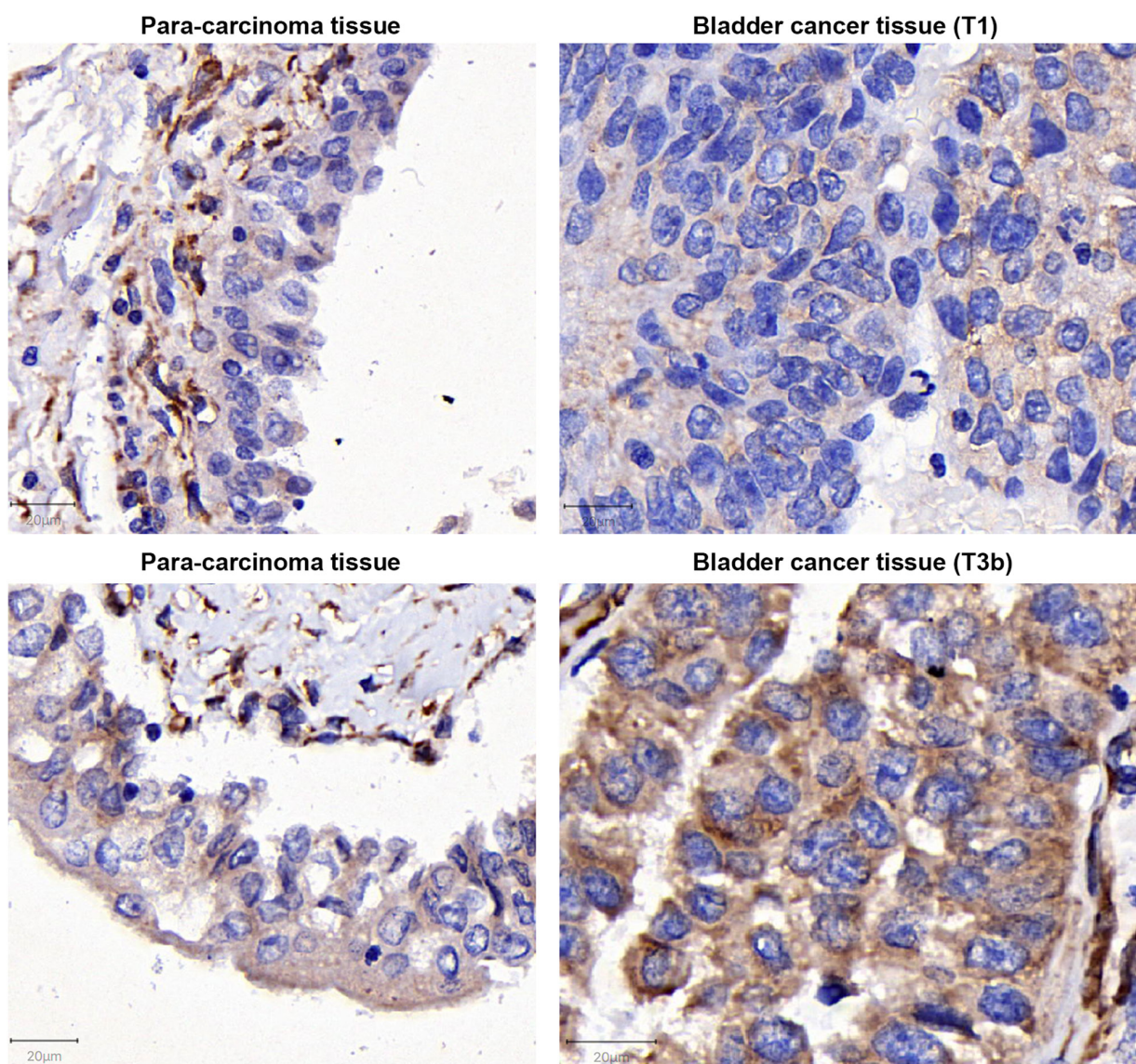


Table SI. Characteristics of patients with bladder cancer.

Patient	Age	Sex	TNM	Surgery	Surgical data	Pathology	IHC score (tumor vs. para-carcinoma)
1	49	Male	T4NxM0	LRC	May 2020	TCC	8 vs. 12
2	71	Male	T2aN0M0	LRC	June 2020	TCC	4 vs. 12
3	70	Male	T1N0M0	TURB	May 2020	TCC	4 vs. 4
4	82	Male	T3bN0M0	LRC	June 2020	TCC	8 vs. 12

LRC, laparoscopic radical cystectomy; TURB, transurethral resection of bladder tumor; TCC, transitional cell carcinoma; IHC, immunohistochemistry.