

Figure S1. Expression of RAB2A in siRNA-transfected BCSCs transfected with siRNAs. BCSCs were transfected with siRNA targeting RAB2A-targeting siRNAs (si-RAB2A#1 and si-RAB2A#2) or NC siRNA. At 48 h post-transfection, the expression of RAB2A was analysed via (A) reverse transcription-quantitative PCR and (B) western blotting. si-RAB2A#1 was used in Figs. 4 and 5. ** $P < 0.01$ and *** $P < 0.001$. RAB2A, Ras-related protein Rab-2A; BCSC, breast cancer stem cell; siRNA, small interfering RNA; NC, negative control.

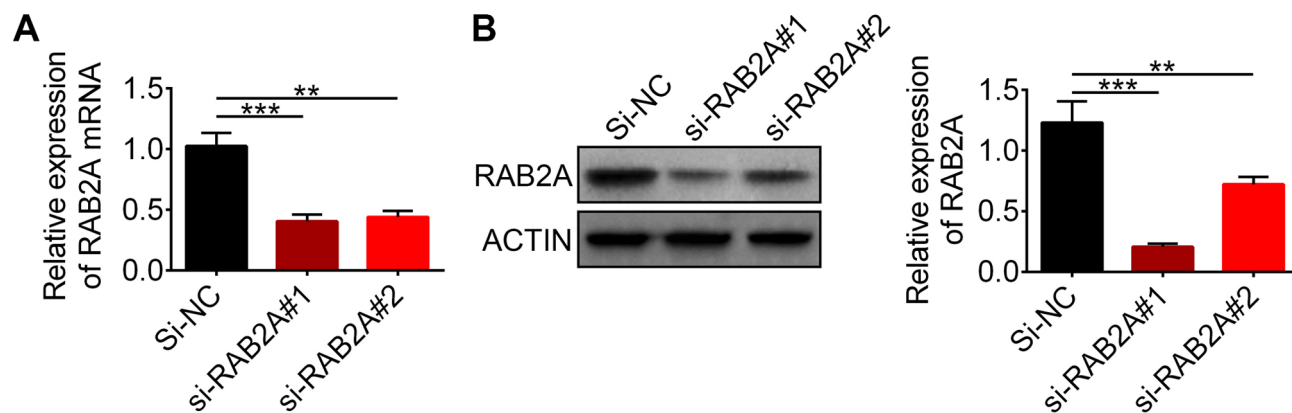


Figure S2. Expression of RAB2A in pcDNA-RAB2A-transfected BCSCs. BCSCs were transfected with pcDNA-RAB2A or pcDNA3.1. At 48 h post-transfection, RAB2A expression was assessed via western blotting. *** $P < 0.001$. RAB2A, Ras-related protein Rab-2A; BCSC, breast cancer stem cell.

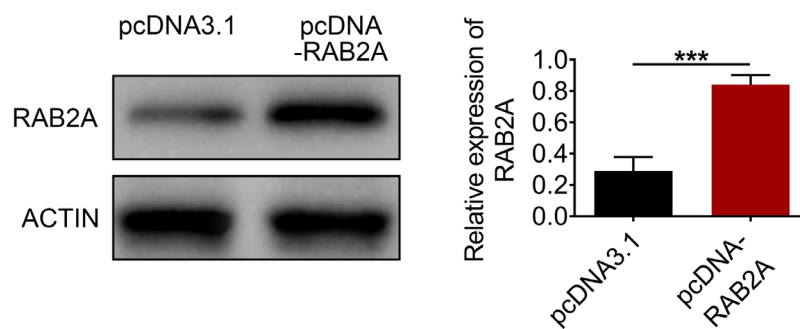


Table SI. Association between miR-376c-3p expression and the clinicopathological characteristics of patients (all female).

Variable	Cases (n=60)	miR-376c-3p expression		P-value
		Low (n=30)	High (n=30)	
Age (years)				
≤60	34	18	16	0.602
>60	26	12	14	
ER status				
Positive	25	13	12	0.793
Negative	35	17	18	
PR status				
Positive	32	12	10	0.592
Negative	28	18	20	
HER2 status				
Negative	27	14	13	0.795
Positive	33	16	17	
Lymph node metastasis				
Yes	19	15	4	0.002
No	41	15	26	
TNM stage				
I + II	40	24	16	0.028
III	20	6	14	

Data were analyzed using the χ^2 test. miR, microRNA; ER, oestrogen receptor; PR, progesterone receptor; HER2, human epidermal growth factor receptor 2.