

Figure S1. Expression of p120 in the spinal cord was significantly higher in the sham group than that in the naive group on postsurgical days 7 and 14. * $P < 0.05$, ** $P < 0.01$ vs. naive group.

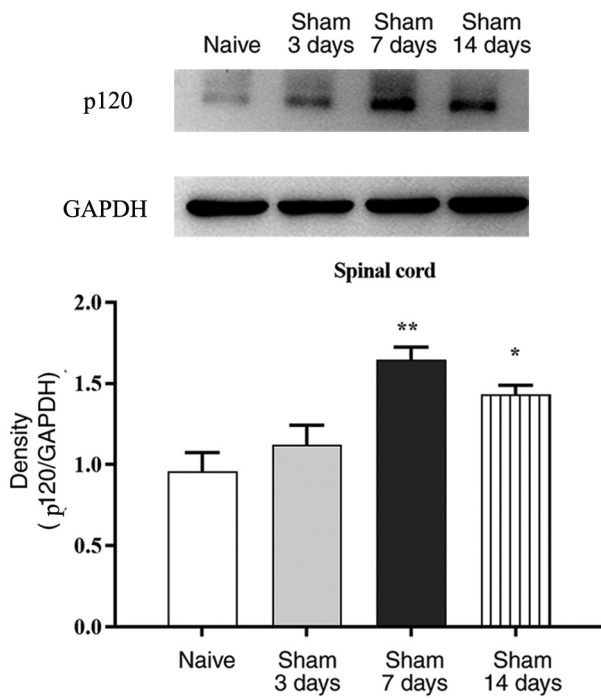


Figure S2. Expression of p120 in the DRG was significantly higher in the sham group than that in the naive group on postsurgical days 7 and 14 * $P < 0.05$, ** $P < 0.01$ vs. naive group. DRG, dorsal root ganglion.

