

Figure S1. Isolation of CD11c(+) DCs. CD11c(+) DCs were isolated from the spleens of mice using mouse CD11c MicroBeads UltraPure and LS separation columns. Cells were fluorescently stained with CD11c-FITC and analyzed using flow cytometry. Based on the flow cytometry results, CD11c(+) cells were discovered to be >80% pure. DC, dendritic cell.

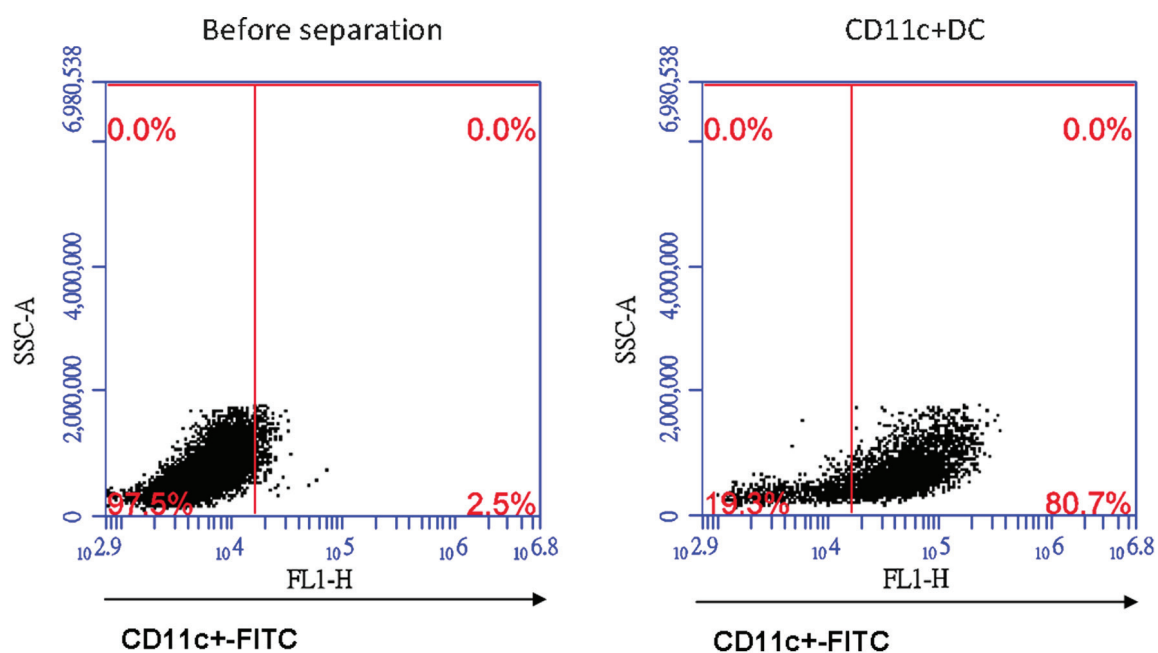


Figure S2. Determination of number of white blood cell types using Diff-Quik staining. Cells in the bronchoalveolar lavage fluid of mice in each group was stained with Diff-Quik using a Cytospin preparation to determine the number of white blood cell types in each group. Magnification, x200. ATL, atractylodin; OVA, ovalbumin; NC, normal control.

