

Figure S1. K-M survival analyses of KIF3A protein expression in clinical samples. (A) There was no significant association between OS time and KIF3A protein expression in LUAD. (B) There was no significant association between OS time and KIF3A protein expression in LUSC. K-M, Kaplan-Meier; KIF3A, kinesin family member 3A; OS, overall survival; LUAD, lung adenocarcinoma; LUSC, lung squamous cell carcinoma.

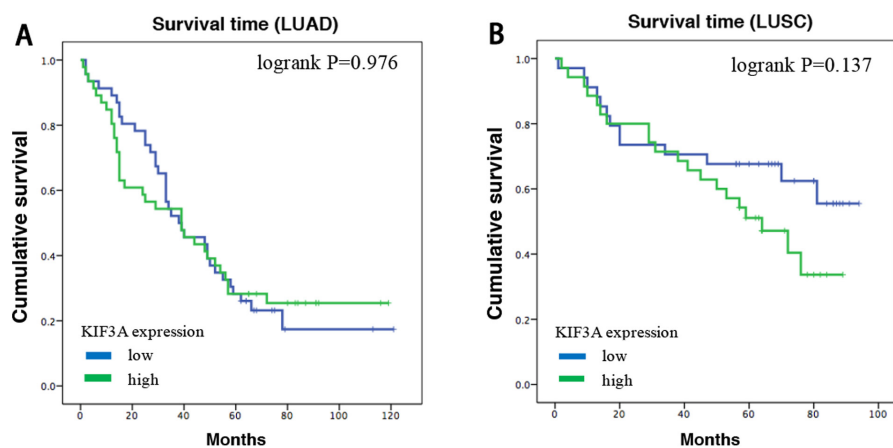


Figure S2. The prognostic value of KIF3A on OS in Prognoscan database. (A) Low KIF3A expression was associated with poor OS in GSE31210. (B) Low KIF3A expression was associated with poor RFS in GSE31210. KIF3A, kinesin family member 3A; OS, overall survival; RFS, relapse-free survival.

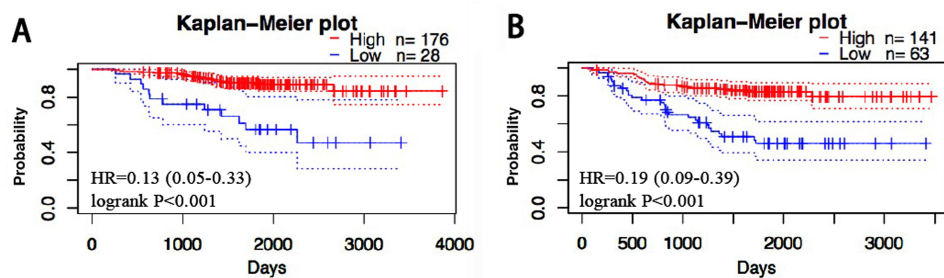


Figure S3. Prognostic value of KIF3A in patients with NSCLC according to clinicopathological characteristics and treatment, using the K-M Plotter database. (A) Low KIF3A mRNA expression level was associated with adverse OS time in patients with a smoking history. (B) Low KIF3A mRNA expression level was associated with adverse OS time in patients without a smoking history. (C) Low KIF3A mRNA expression was associated with a short OS time in females. (D) Low KIF3A mRNA expression was associated with a short OS time in males. (E) Low KIF3A mRNA expression level was associated with adverse OS time in patients with clinical stage I. (F) Low KIF3A mRNA expression level was associated with adverse OS time in patients with clinical T1 stage. (G) Low KIF3A expression was associated with poor OS time in surgically successful patients. KIF3A, kinesin family member 3A; NSCLC, non-small cell lung cancer; K-M, Kaplan-Meier; OS, overall survival.

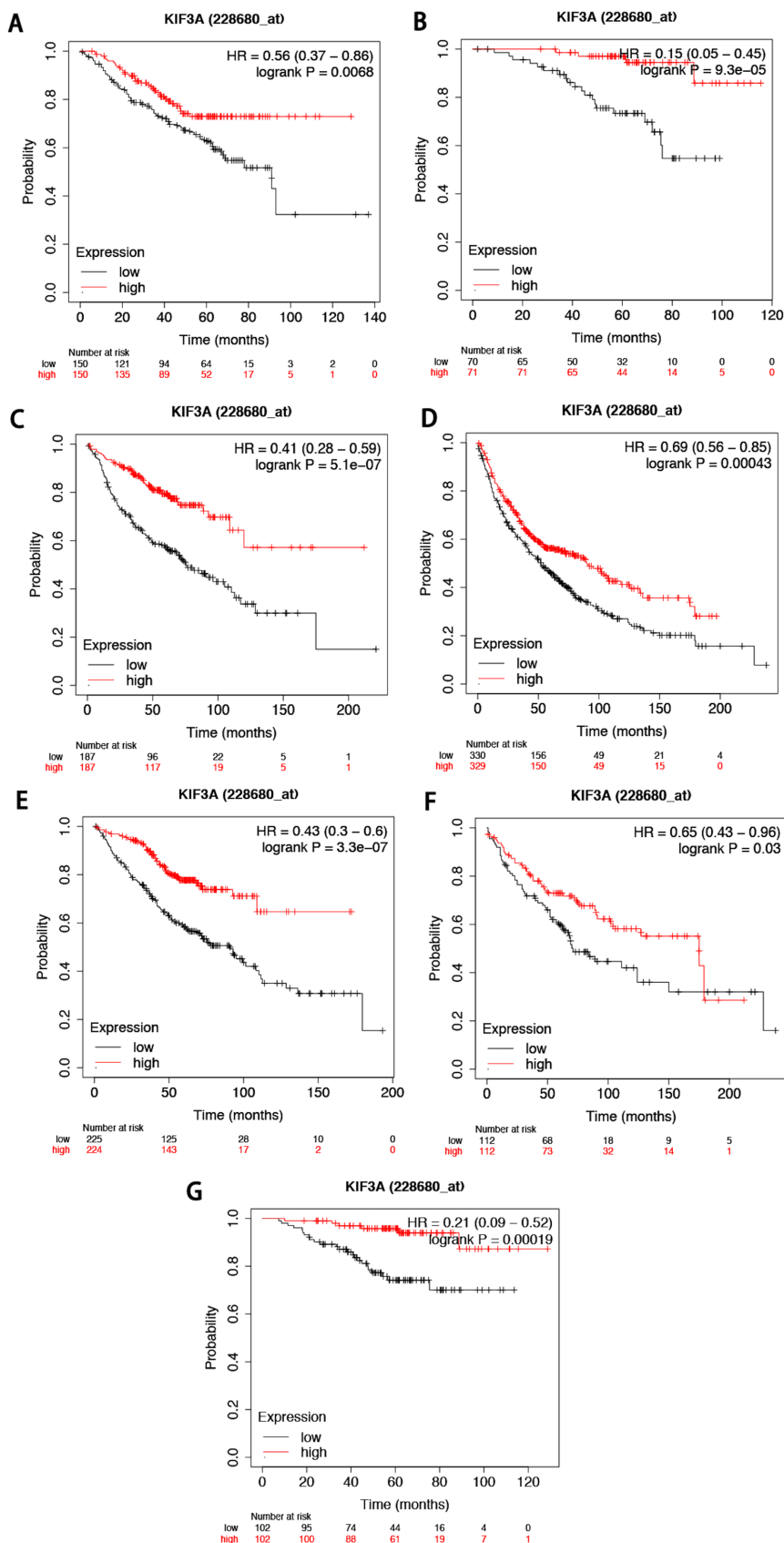


Table SI. Sequences of KIF3A-siRNA and NC-siRNA.

Name	Forward (5'-3')	Reverse (5'-3')
KIF3A-siRNA-1	GACCUGAUGUGGGAGUUUATT	UAAACUCCCACAUCAGGUCTT
KIF3A-siRNA-2	CGAUCAAUAAAUCAGAGAATT	UUCUCUGAUUUUAUUGAUCGTT
KIF3A-siRNA-3	GCCUUAUCGUAAACUCUAAATT	UUUAGAGUUACGAUAAGGCTT
KIF3A-siRNA-4	GGUUCAGAAAGACAGGCAATT	UUGCCUGUCUUUCUGAACCTT
NC-siRNA	UUCUCCGAACGUGUCACGUTT	ACGUGACACGUUCGGAGAATT

Si, small interfering; NC, negative control; KIF3A, Kinesin family member 3A.