

Figure S1. Representative migration patterns of the pre-stained molecular weight marker and target proteins as determined by immunoblotting. The marker is a pre-stained mixture of 10 recombinant proteins ranging from 10-170 kDa. The molecular weights of target proteins, including Akt and p-Akt, ERK and p-ERK, and GAPDH were 60, 44/42 and 37 kDa, respectively (n=6). p-, phosphorylated; Akt, protein kinase B; ERK, extracellular signal-regulated kinase.

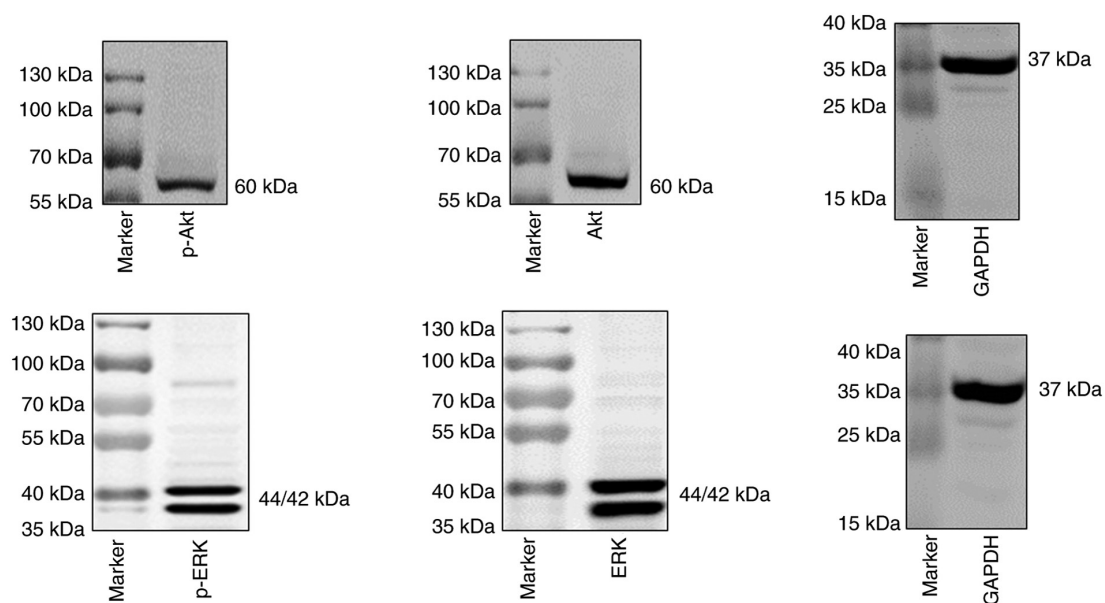


Figure S2. Ratio of p-ERK/ERK to p-Akt/Akt expression in balloon-injured carotid artery. Bar graph demonstrating the ratio of p-ERK/ERK to p-Akt/Akt expression, as determined by immunoblotting, in the carotid arteries in the control, STZ and STZ + I rats at 2 weeks post-surgery. Values are presented as the mean \pm standard deviation (n=6). *P<0.05 vs. control group; #P<0.05 vs. STZ + I group. p-, phosphorylated; STZ, streptozotocin; I, insulin; Akt, protein kinase B; ERK, extracellular signal-regulated kinase.

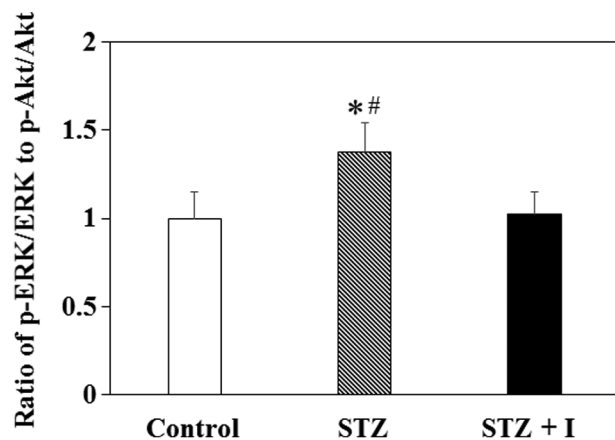


Table SI. Incubation of glucose and/or insulin with primary vascular smooth muscle cells.

Group	Starved	Control	Uncontrolled type 1 diabetes	Controlled type 1 diabetes
Normal glucose (5 mM)	0	Full 24 h	First 12 h	Last 12 h
High glucose (25 mM)	0	0	Last 12 h	First 12 h
Normal insulin (100 nM)	0	Full 24 h	First 12 h	Last 12 h