

Figure S1. MMP2 and MMP9 protein expression was not significantly influenced by pcDNA3.1-GAS5 transfection of CRC HT29 and SW480 cells compared to the control group. β -actin levels were used as an internal loading control. MMP, matrix metalloproteinase; GAS5, growth arrest specific 5; CRC, colorectal cancer.

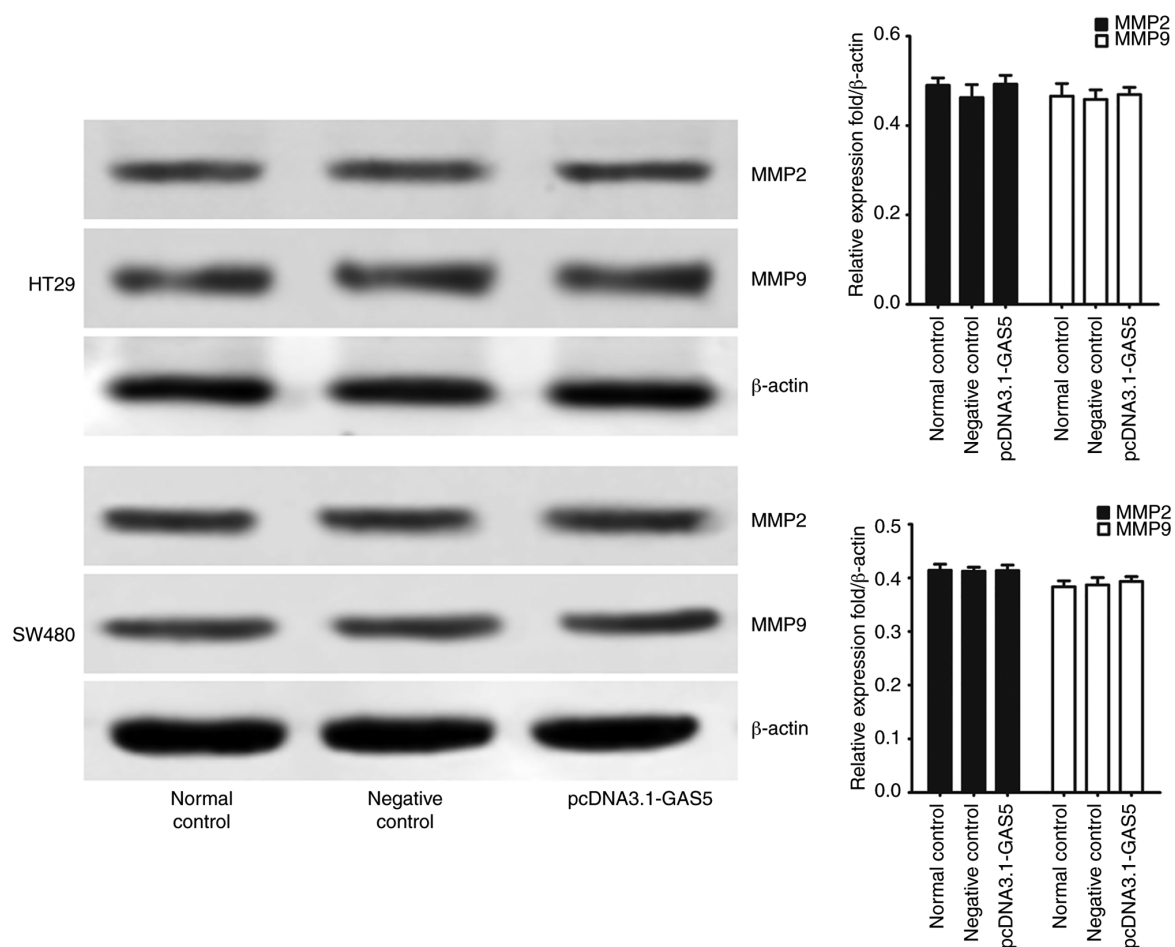


Figure S2. Representative images of the CRC HT29 and SW480 cells that migrated and invaded into the lower chamber (left panels, original magnification, x100), and quantitative data of average numbers of cells per field of view are presented in the right histograms. CRC, colorectal cancer.

