

Figure S1. Fluorescence expression of two groups of cells after transfection. (A) White light, TE1-KD transfection after 48 h. (B) Green fluorescence, TE-KD transfection after 48 h (C) White light, TE1-C transfection after 48 h. (D) Green fluorescence, TE-C transfection after 48 h (scale bar, 10  $\mu\text{m}$ ). KD, knockdown; C, negative control.

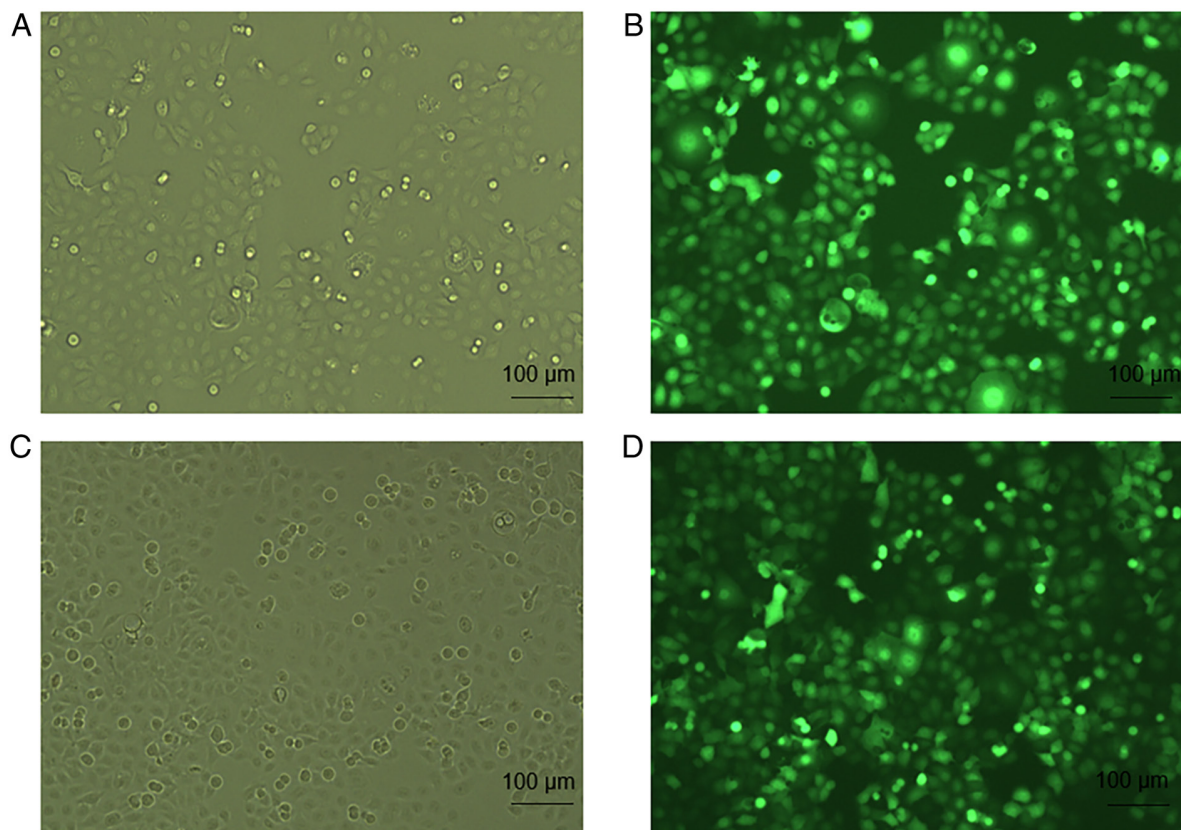


Figure S2. Western blotting image of knockdown experiments. Western blotting demonstrated that knockdown of CIN85 failed in Kyse 30 cells and was successful in TE1 cells. CIN85, SH3 domain-containing kinase-binding protein 1; KD, knock-down.

