

Figure S1. Representative immunohistochemical staining of PLS3 in non-small cell lung cancer samples. Representative immunohistochemical staining of PLS3 in (A) negative and (B) positive cases. Original magnification, x200; scale bar, 100  $\mu$ m. PLS3, plastin 3.

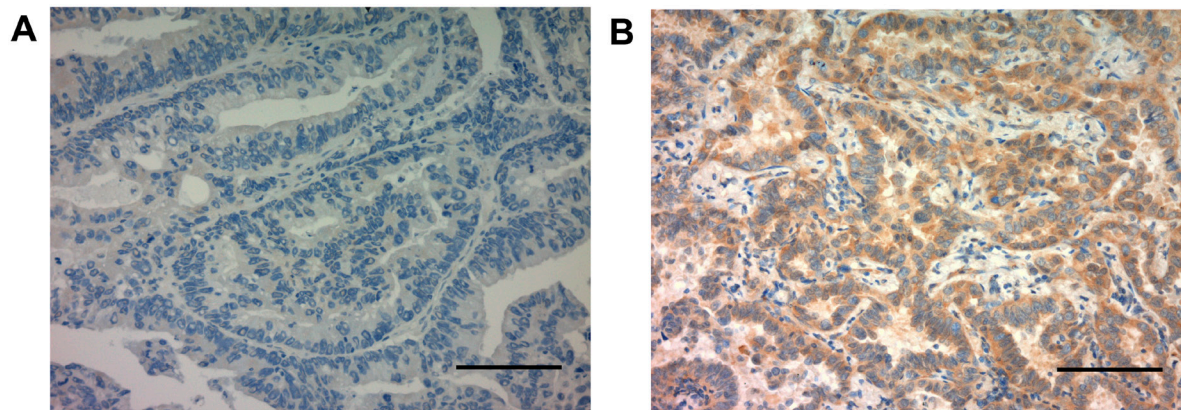


Figure S2. Overall survival in patients with NSCLC treated with nivolumab according to each tested cut-off point of plasma PLS3 concentration. (A) Overall survival curves of patients with NSCLC divided into PLS3  $\leq 5.18$  and  $> 5.18$  ng/ml groups. (B) Overall survival curves of patients with NSCLC divided into PLS3  $\leq 5.43$  and  $> 5.43$  ng/ml groups. PLS3, plastin 3; NSCLC, non-small cell lung cancer.

