

Figure S1. KEL-FIB cells before scratching. (A) Images of KEL-FIB cells transfected with miR-194-5p mimic, miR-194-5p inhibitor or NC before scratching (magnification, x100). (B) Images of KEL-FIB cells transfected with si-NR2F2 or NC before scratching (magnification, x100). KEL-FIB, human keloid fibroblasts; miR, microRNA; NC, negative control; si, small interfering RNA.

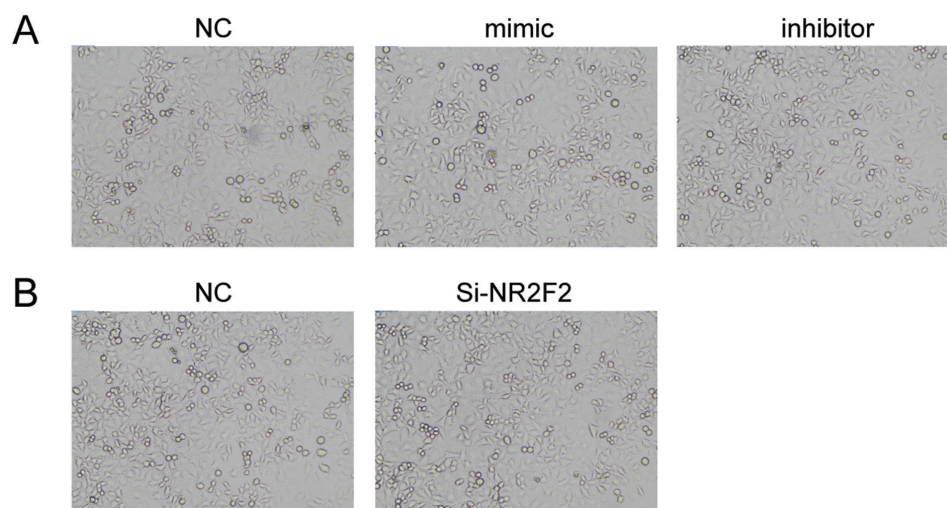


Table SI. Sequences of miR-194-5p mimic, miR-194-5p inhibitor, si-NR2F2 and NC.

Gene	Sequence (5'→3')
miR-194-5p mimic	AAGGCAGGGCCCCCGCUCCCC
miR-194-5p inhibitor	GGAGCGGGGGCCCUGCCUUUU
miR-mimic NC	UCACAACCUCCUAGAAAGAGUAGA
miR-inhibitor NC	UUGUACUACACAAAAGUACUG
si-NR2F2	F: GAUCGUUCAAGCAAGCUAAUC R: UUAGCUUGCUUGAACGAUCUU
miR, microRNA; NR2F2, nuclear receptor subfamily 2 group F member 2; NC, negative control; F, forward; R, reverse.	

Table SII. Sequences of primers used for the construction of dual-luciferase reporter gene assay vectors.

Gene	Sequence (5'→3')
NR2F2	F: CCTCGAGGTAAAGTTAGTGTG R: GTTTCGTTTAAACGCCGCGTT

NR2F2, nuclear receptor subfamily 2 group F member 2; F, forward; R, reverse.