

Figure S1. Uni- and multivariate survival analysis of prognostic factors influencing cancer-specific survival in localized and distant clear cell renal cell carcinomas represented as forest plots, where the following comparisons have been applied: (1) G3 vs. G1/G2; (2) pT3/pT4 vs. pT1/pT2; (3) pN1/pN2 vs. N0/pN0; (4)  $\geq 1$  vs. 0; (5)  $>65$  vs.  $\leq 65\%$ ; (6) female vs. male; and (7)  $>60\%$  vs.  $\leq 60\%$ . \* $P < 0.05$  and \*\*\* $P < 0.001$ . ECOG, Eastern Cooperative Oncology Group; CI, confidence interval.

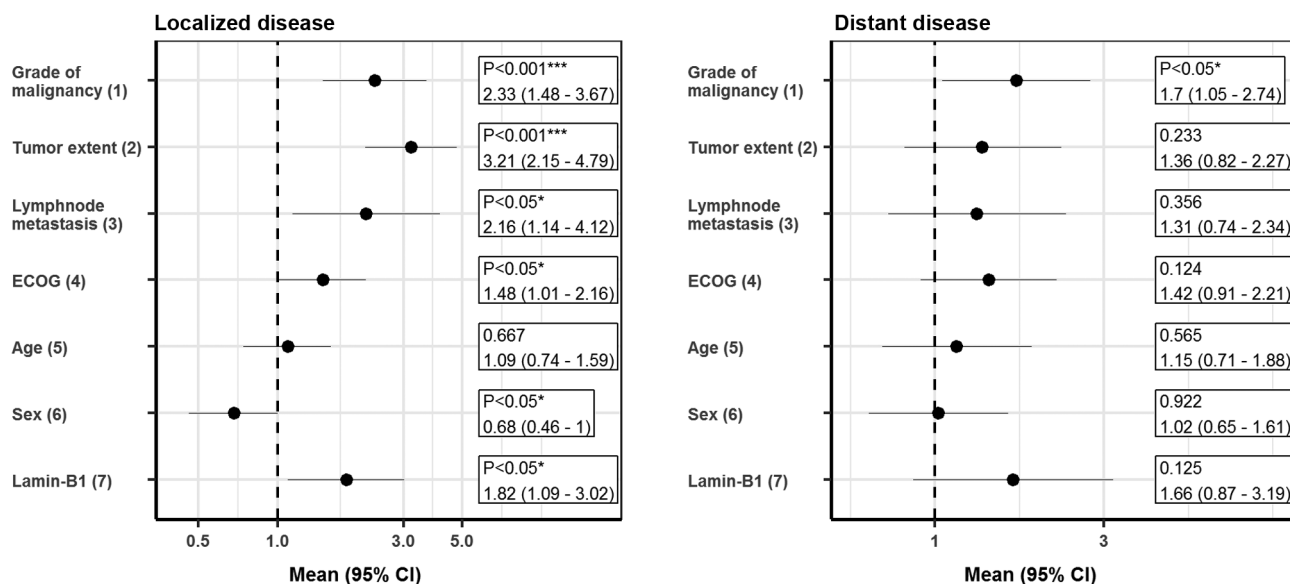


Figure S2. Analysis of The Cancer Genome Atlas dataset. Associations between the mRNA expression of LMNB1 and survival times are represented as Kaplan-Meier plots. LMNB1, Lamin-B1.

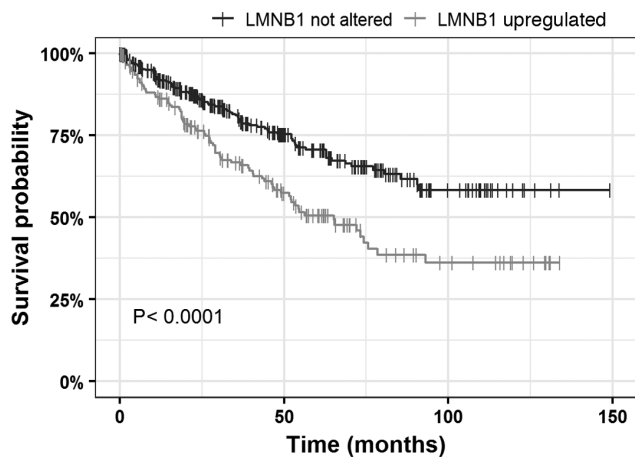


Figure S3. Comparison of the proliferation rate of clear cell renal cell carcinoma in relation to high vs. low Lamin-B1 expression represented as violin plots.

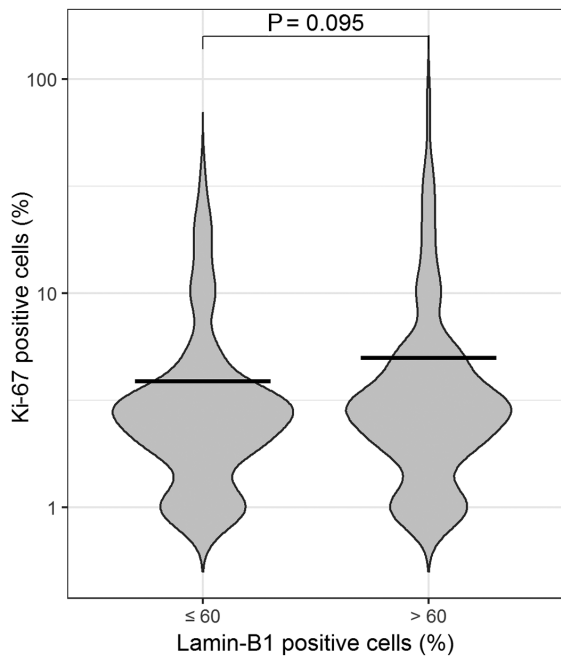


Table SI. Clinical and pathological features of the study population grouped by Lamin-B1 expression.

Feature	Lamin-B1 expression, n (%)	
	≤60% (n=119)	>60% (n=503)
Fuhrman grade		
1	33 (27.7)	137 (27.2)
2	61 (51.3)	284 (56.5)
3	25 (21.0)	82 (16.3)
Tumor extent		
1	67 (56.3)	267 (53.1)
2	9 (7.6)	40 (8.0)
3	40 (33.6)	177 (35.2)
4	3 (2.5)	19 (3.8)
Local lymph node metastasis		
No	115 (96.6)	473 (94.0)
Yes	4 (3.4)	30 (6.0)
Distant metastasis		
No	104 (87.4)	417 (82.9)
Yes	15 (12.6)	86 (17.1)
Sex		
Female	53 (44.5)	196 (39.0)
Male	66 (55.5)	307 (61.0)
Age at surgery, years		
≤65	76 (63.9)	277 (55.1)
>65	43 (36.1)	226 (44.9)
ECOG		
0	72 (60.5)	309 (61.4)
>0	47 (39.5)	194 (38.6)

Data are presented as n (%). ECOG, Eastern Cooperative Oncology Group.