

Figure S1. EdU staining of LINC00887-knockdown lung cancer cells. The proliferation of A549 and NCI-H460 cells transfected with si-Con or si-LINC00887 was assessed by EdU and DAPI staining. Representative images were captured under x200 magnification. Scale bar, 100 μ m. EdU, 5'-ethynyl-2'-deoxyuridine; si, small interfering RNA; Con, control.

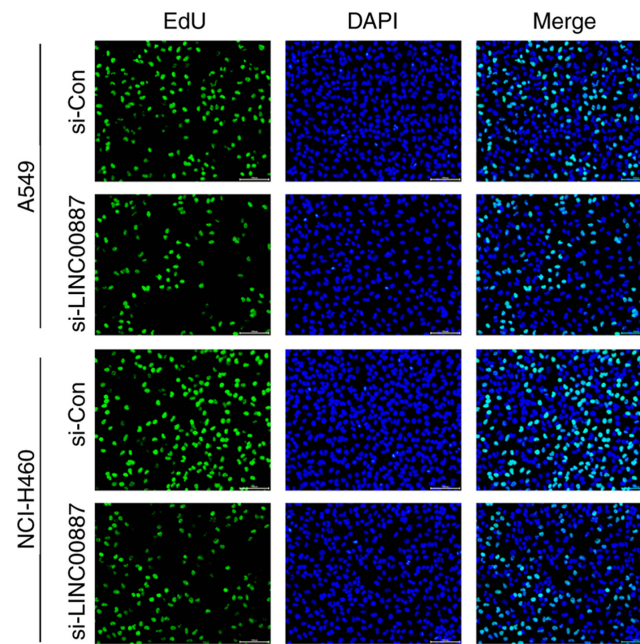


Figure S2. LINC00887 overexpression does not alter cell proliferation, migration and invasion in normal BEAS-2B cells. Human lung epithelial BEAS-2B cells were transfected with control vector (pcDNA3.1+NC) or LINC00887 overexpression vector (pcDNA3.1+LINC00887). (A) Expression levels of LINC00887 in BEAS-2B cells. (B and C) EdU staining was conducted to evaluate the effects of LINC00887 overexpression on cell proliferation. (D-F) Transwell experiments were conducted to evaluate the effects of LINC00887 overexpression on cell migration and invasion. Data are presented as the mean \pm SD. ** $P < 0.01$ vs. pcDNA3.1+NC. EdU, 5'-ethynyl-2'-deoxyuridine; miR, microRNA; si, small interfering RNA; NC, negative control.

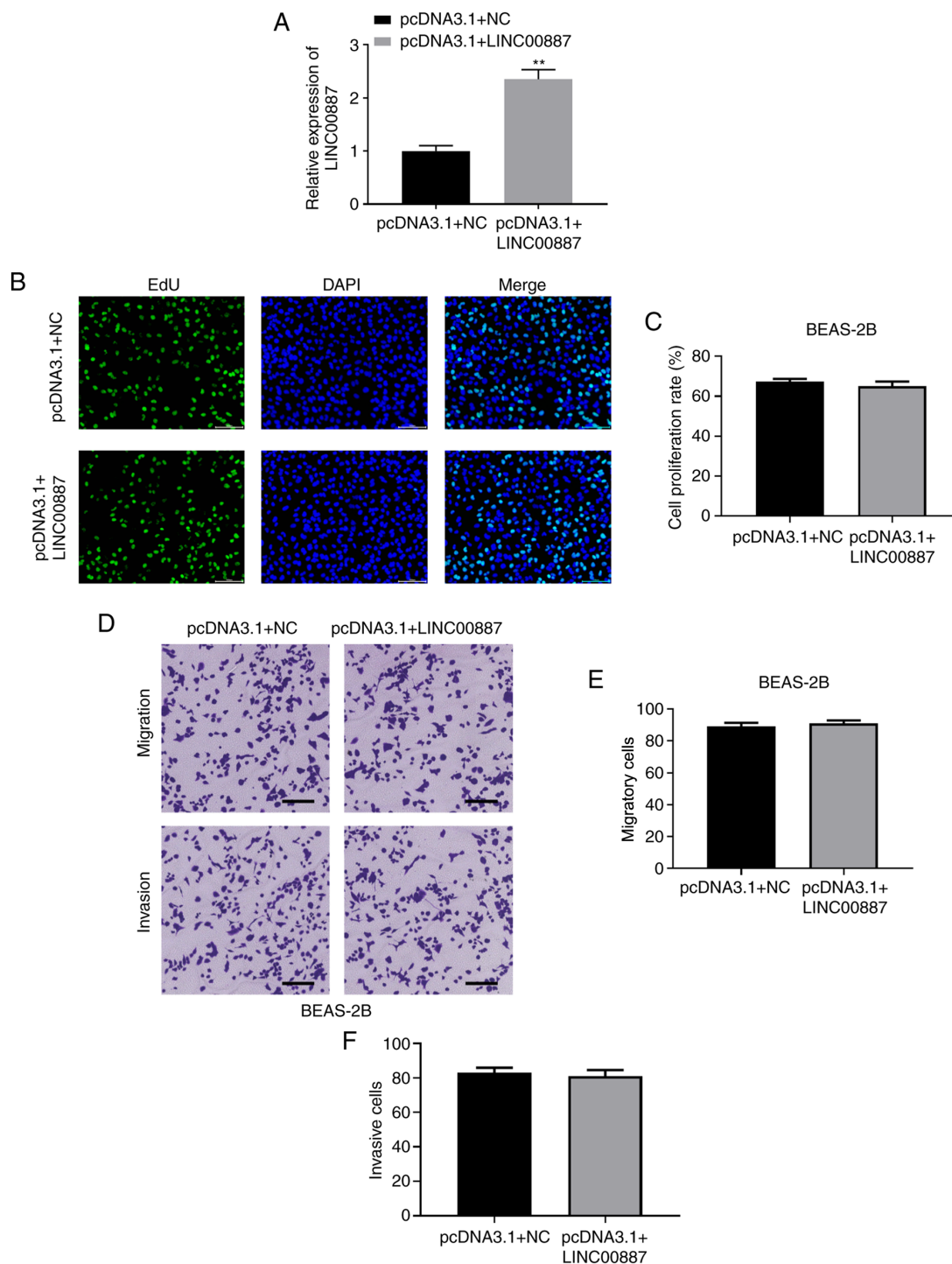


Figure S3. Inhibition of miR-206 in LINC00887-knockdown lung cancer cells increases cell proliferation. Lung carcinoma A549 or NCI-H460 cells were transfected with si-LINC00887, together with inhibitor-NC or miR-206 inhibitor. Cell proliferation was assessed via immunofluorescence staining of EdU and DAPI. Representative images were captured under x200 magnification. Scale bars, 100 μ m. EdU, 5'-ethynyl-2'-deoxyuridine; NC, negative control; miR, microRNA; si-LINC00887, small interfering RNA targeting LINC00887.

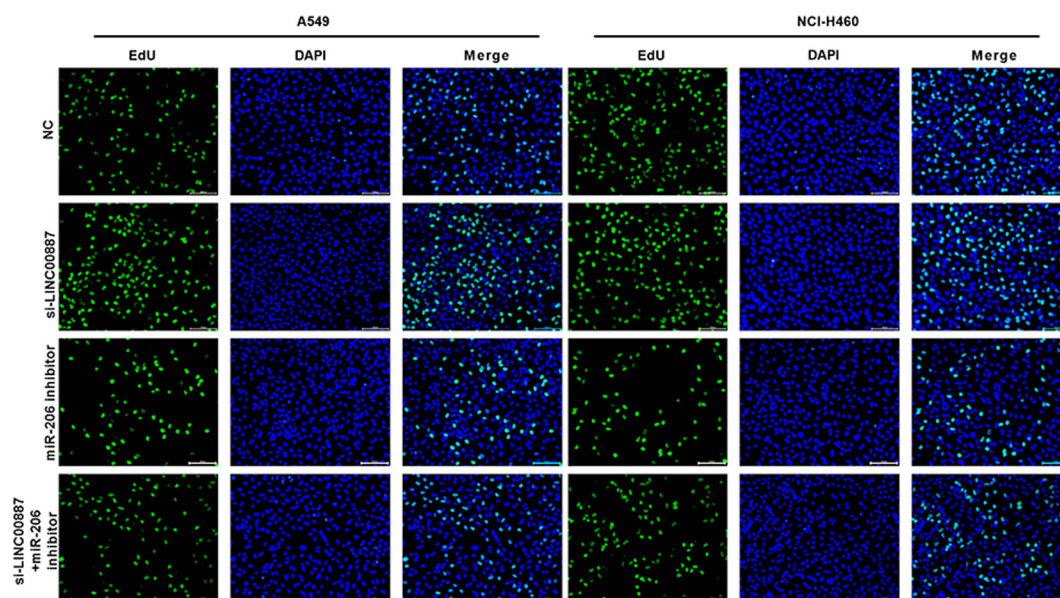


Figure S4. Overexpression of miR-206 in LINC00887-knockdown lung cancer cells decreases cell proliferation. Lung carcinoma A549 or NCI-H460 cells were transfected with si-LINC00887, miR-206 mimic, si-NRP1 or NC. Cell proliferation was assessed by immunofluorescence staining of EdU and DAPI. Representative images were captured under x200 magnification. Scale bars, 100 μ m. EdU, 5'-ethynyl-2'-deoxyuridine; NC, negative control; miR, microRNA; si, small interfering RNA; NRP1, neuropilin 1.

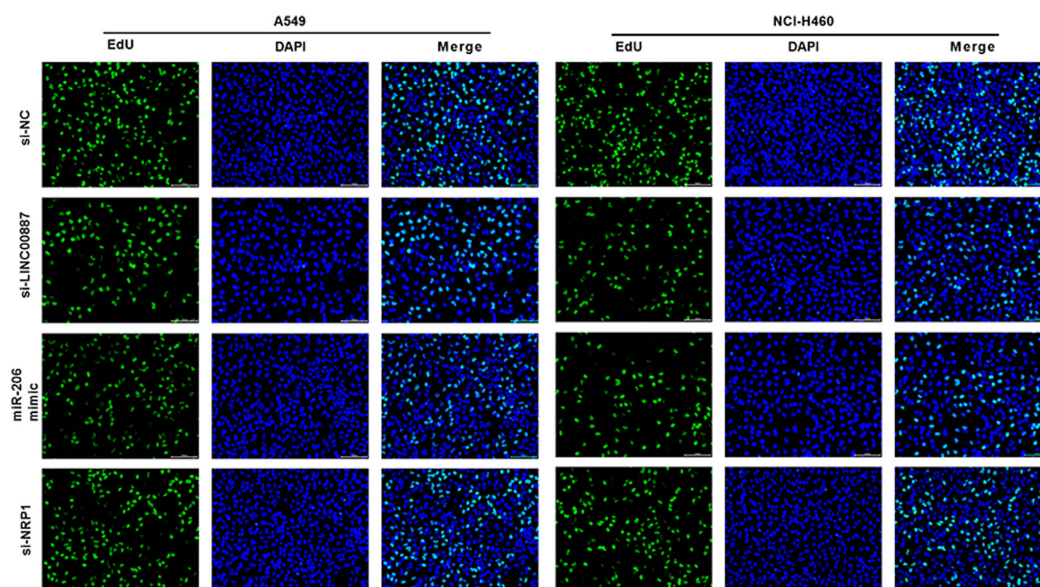


Figure S5. Transfection efficiency of miR-206 mimic, si-NRP1 was validated by RT-qPCR. (A) Lung carcinoma A549 or NCI-H460 cells were transfected with (A) miR-206 mimic or miR-NC, (B) si-NRP1 or si-NC. The relative expression levels of miR-206 or NRP1 were analyzed by RT-qPCR at 48 h post-transfection. Data are presented as the mean \pm SD ($n \geq 3$). ** $P < 0.01$. miR, microRNA; NC, negative control; si, small interfering RNA; NRP1, neuropilin 1; RT-qPCR, reverse transcription-quantitative PCR.

