

Figure S1. Hematoxylin and eosin staining was used to identify the morphology of CC and adjacent tissues (control group). Left, paracancerous tissue (control group); right, CC tissue. Scale bar, 50  $\mu$ m. CC, cervical cancer.

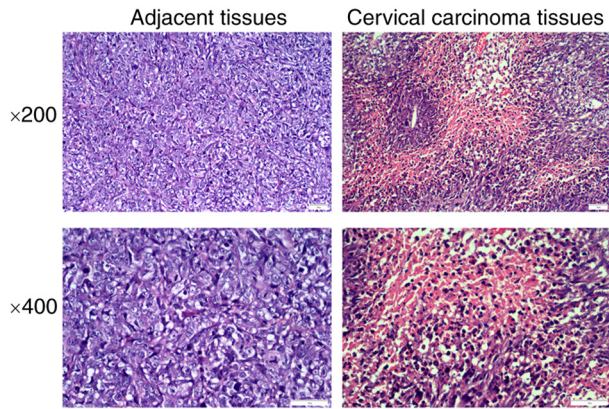


Figure S2. Western blotting was used to detect the expression of Notch 1 in CC and adjacent tissues (control group). (A) Results of western blotting. (B) Analysis of results. CC, cervical cancer. ##P<0.01.

