

Figure S1. Effects of TFEB knockdown on TFEB, LC3 and LAMP1 expression. (A) Knockdown of TFEB with 50 nmol/l TFEB-siRNA-2 was confirmed by western blotting. Knockdown of TFEB with 50 nmol/l TFEB-siRNA-2 effectively reversed the increased expression of (B) LC3 and (C) LAMP1 induced by TGF- β 1. ** $P < 0.01$ vs. control group; ## $P < 0.01$ vs. TGF- β 1 treatment group. TGF- β 1, transforming growth factor- β 1; TFEB, transcription factor EB; siRNA, small interfering RNA; LAMP1, lysosome-associated membrane protein 1.

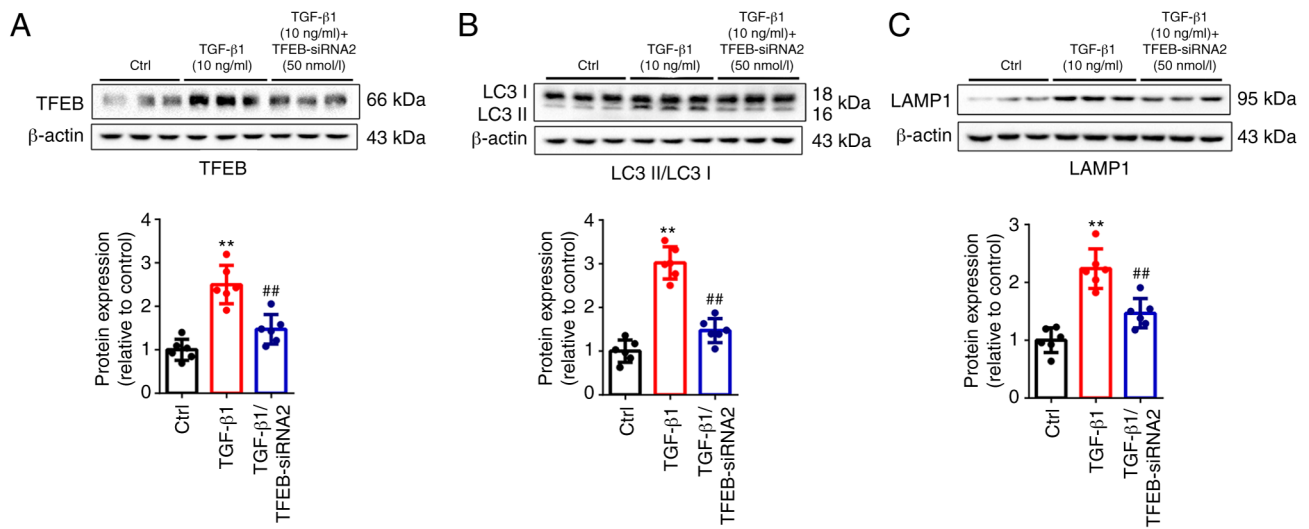


Figure S2. TFEB-siRNA-2 enhances TGF- β 1-induced endoplasmic reticulum stress. TFEB-siRNA-2 significantly increased the expression of (A) p-eIF2 α , (B) XBP-1s and (C) CHOP in fibroblasts treated with TGF- β 1. **P<0.01 vs. control group; #P<0.05 and ##P<0.01 vs. TGF- β 1 treatment group. TGF- β 1, transforming growth factor- β 1; TFEB, transcription factor EB; siRNA, small interfering RNA; p-, phosphorylated; eIF2 α , α subunit of eukaryotic initiation factor 2; CHOP, C/EBP-homologous protein caspase 3; XBP-1s, spliced X-box binding protein 1.

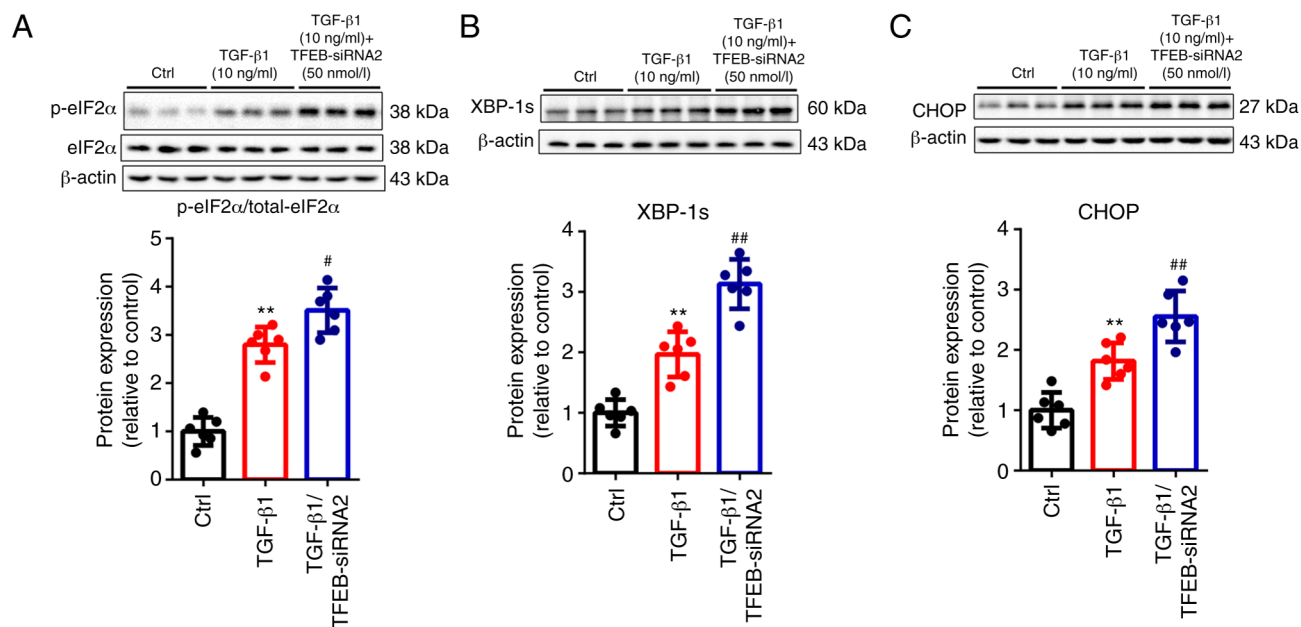


Figure S3. Effects of TFEB knockdown on cleaved caspase 3, COL I and α -SMA expression, as well as pro-COL I α 1 secretion. TFEB-siRNA-2 significantly increased the level of (A) cleaved caspase 3, whereas it led to a reduction in the expression levels of (B) COL I and (C) α -SMA compared with the TGF- β 1 treatment group. (D) Similar trends were also observed in the secretion levels of pro-COL I α 1 in the supernatant. * $P < 0.01$ vs. control group; ** $P < 0.01$ vs. TGF- β 1 treatment group. TGF- β 1, transforming growth factor- β 1; TFEB, transcription factor EB; siRNA, small interfering RNA; caspase 3, cysteinyl aspartate specific proteinase 3; α -SMA, α smooth muscle actin; COL I, collagen I; ns, not significant compared with control group.

