

Figure S1. Rat DVT model modeling process diagram (stenosis). Skin preparation and disinfection of the abdominal surgery area. (B) Making a 2 cm incision in the middle of the abdomen. (C) Full exposure and separating the inferior vena cava branches below the left renal vein to the level of the iliac vein. (D) Ligation of the visible branches one by one using a 5-0 silk suture. (E) Placing a 5-0 silk suture tightly around the IVC together with a 4-0 silk suture. (F) Ligation of the IVC. (G) Removing the 4-0 silk suture. (H) Suturing the abdominal muscle, skin and skin disinfection. DVT, deep vein thrombosis; IVC, Inferior vena cava.

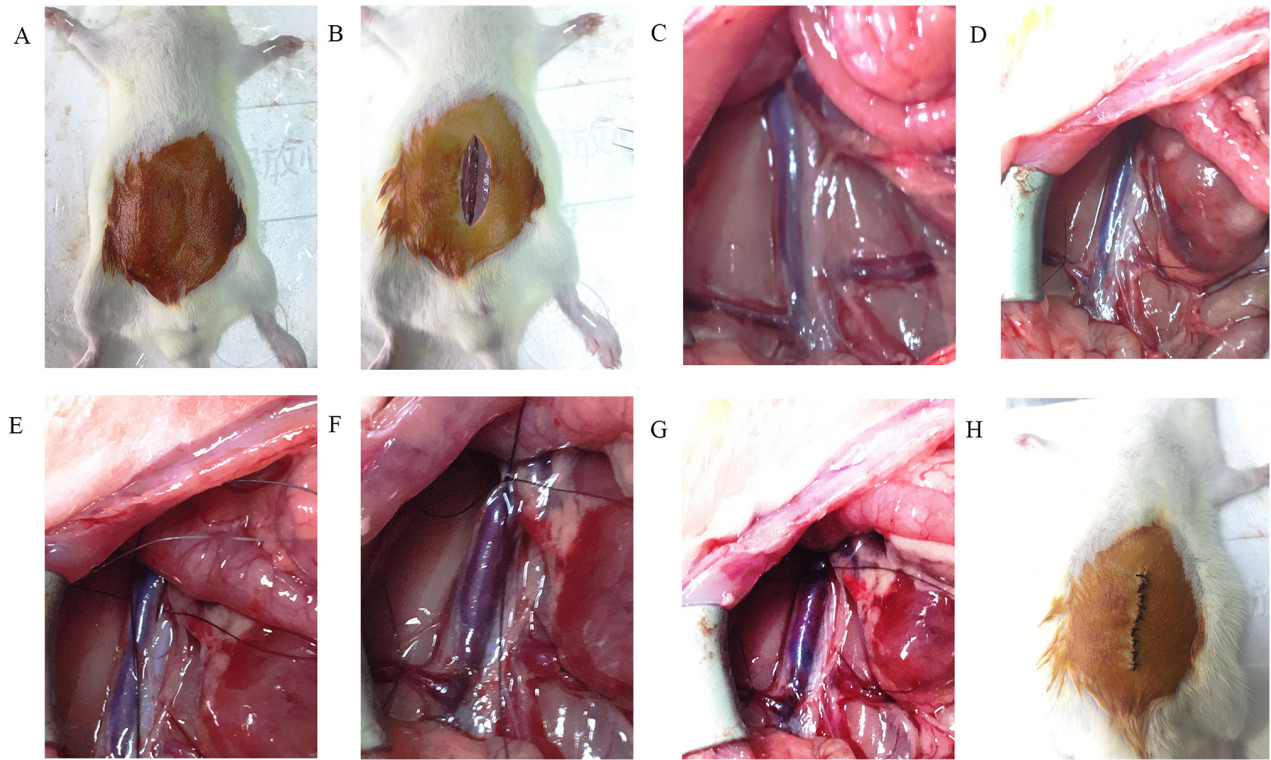


Figure S2. Typical pathological changes in rat inferior vena cava thrombus at different time points. Magnification, x100.

