

Figure S1. Immunohistochemical staining of epidermal growth factor receptor protein expression in MSS tumour. Images show N, T1, T2 and M samples from MSS tumour. N, T1, T2 and M samples were all collected from the same individual as in Fig. 4 (magnification, x100, x200 and x400). N, adjacent normal tissue; T1, tumour centre; T2, invasive tumour front; M, metastasis; MSS, microsatellite-stable.

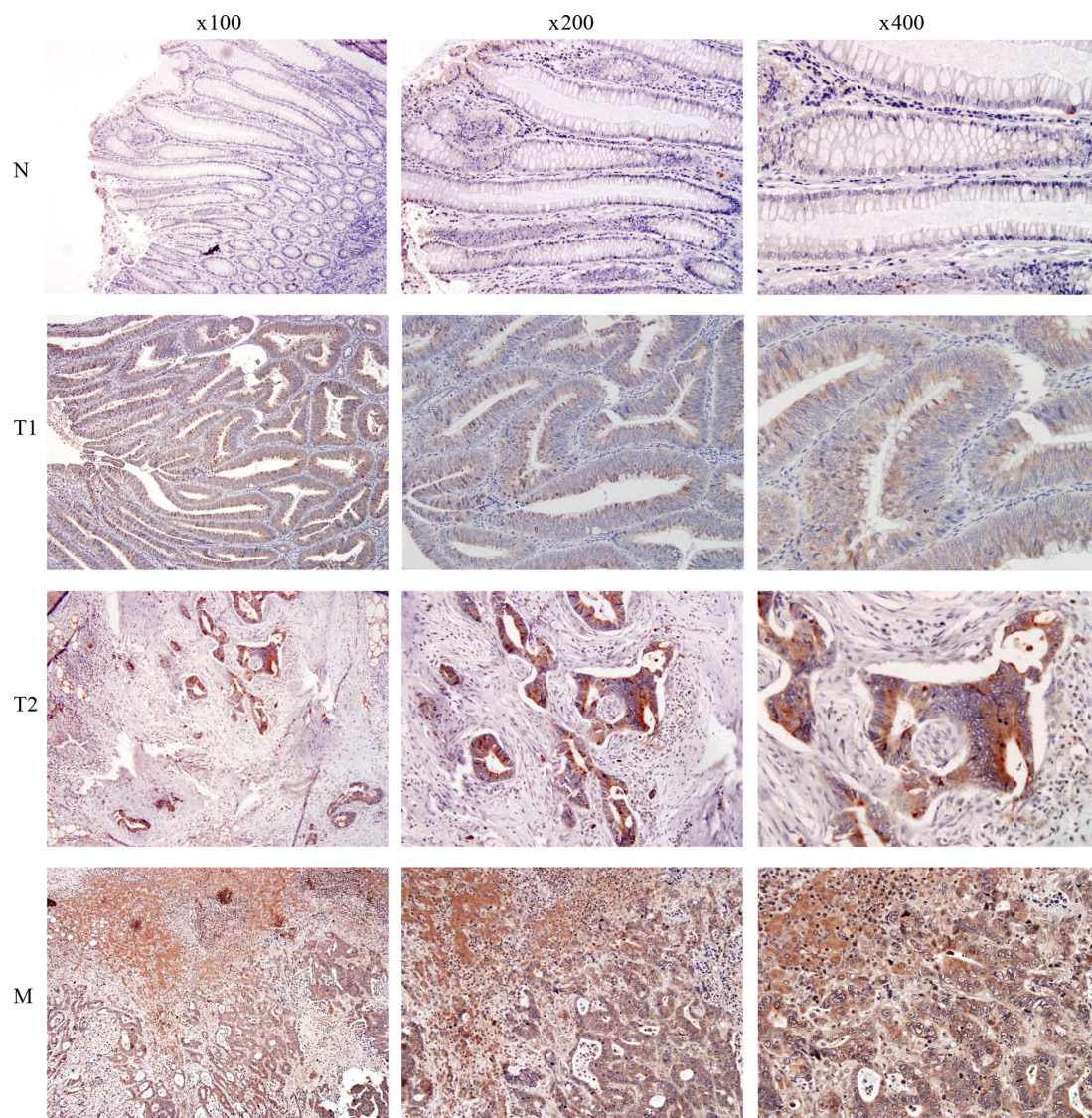




Figure S2. Immunohistochemical staining of epidermal growth factor receptor protein expression in MSI-H tumour. Images show N, T1, T2 and M samples from MSI-H tumour. N, T1, T2 and M samples were all collected from the same individual as in Fig. 4 (magnification, x100, x200 and x400). N, adjacent normal tissue; T1, tumour centre; T2, invasive tumour front; M, metastasis; MSI-H, microsatellite instability high.

