

Figure S1. Continued.

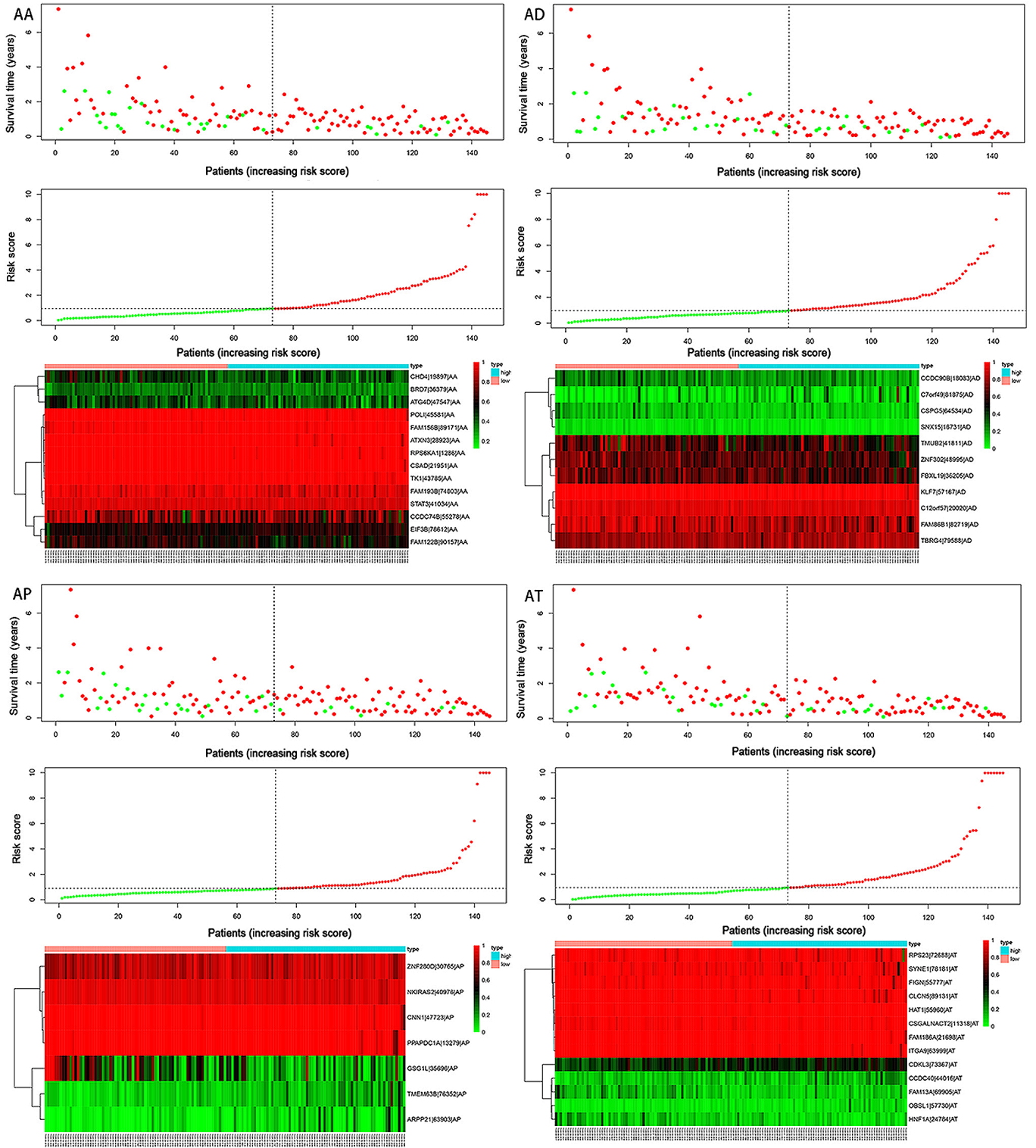


Figure S1. Patients with glioblastoma were divided into high- and low-risk sub-groups based on the median risk score. The upper part of each assembly indicates the distribution of patients' survival status and survival times ranked by risk score, the middle part represents the risk score curves and the bottom heatmap displays the splicing patterns of the corresponding splicing signature. Color transition from green to red indicates the increasing percent-splice-in score of corresponding alternative splicing events from low to high. (A) AA, AD, AP, AT, ES, ME, RI and All. AA, alternate acceptor; AD, alternate donor; AP, alternate promoter; AT, alternate terminator; ES, exon skipping; ME, mutually exclusive exon; RI, retained intron; All, final splicing signature.

