

Figure S1. Size distribution of the K562 and K562<sup>IR</sup> exosomes analyzed using qNano. The qNano analysis confirmed comparable size distributions of the vesicles with the sizes between 100-110 nm. IR, imatinib-resistant.

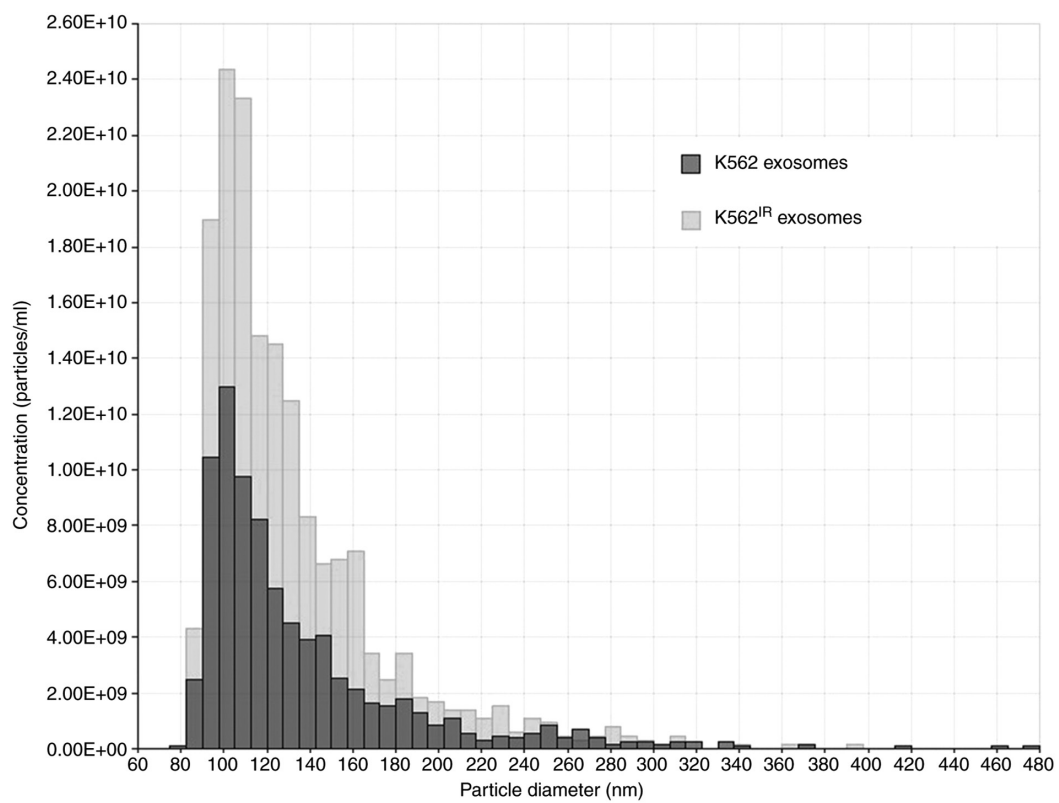


Figure S2. LFQ-MS peptide signal intensity correlations between individual LC-MS analysis. The figure is a composite image of the correlation plots from the LFQ-MS peptide signal intensities between all the LC-MS runs from the proteomic analysis. Pearson's correlation coefficients in the range of 0.723-0.971 revealed good inter-sample reproducibility. LFQ, label-free quantification; LC, liquid chromatography; MS, mass spectrometry; IR, imatinib-resistant.

