

Figure S1. Effect of LIUS on the morphology of mouse ST2 bone marrow stromal cells. After treatment with LIUS at 25 mW/cm² for 20 min, cells were cultured for 24 h at 37°C. (A) Non-treated cells. (B) LIUS-treated cells. Scale bars, 100 μ m. LIUS, low-intensity ultrasound.

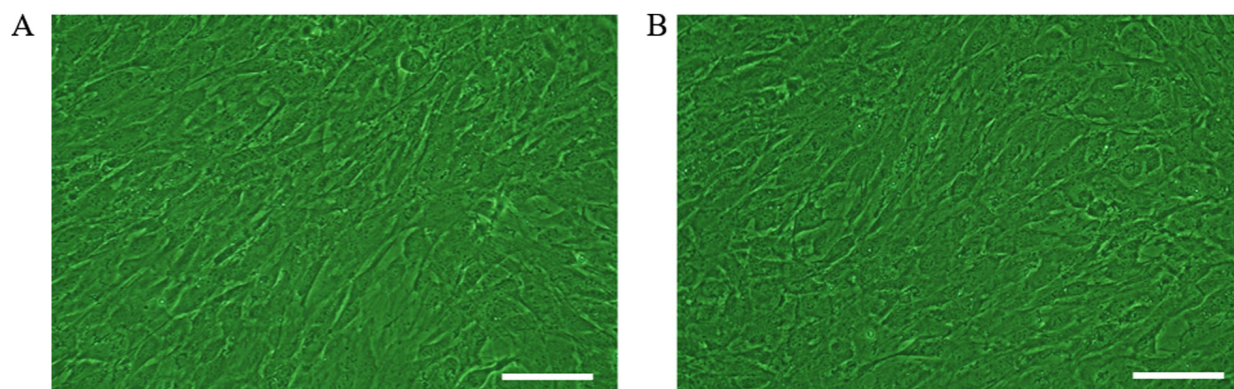


Figure S2. Effect of LIUS on cell growth and ALP activity in ST2 bone marrow stromal cells. After treatment with LIUS at 25 mW/cm² for 20 min, cells were cultured for 24 h at 37°C. (A) Cell growth was measured using the Cell Count Reagent SF. (B) ALP activity in the cell homogenate was measured using a protocol supplied by Sigma-Aldrich; Merck KGaA. The ALP activity of the control sample was 111.9±16.6 nmol/mg/h. Ctrl=100%. Data are presented as the mean ± SD (n=4). LIUS, low-intensity ultrasound; ALP, alkaline phosphatase; Ctrl, control.

