

Figure S1. Construction of the validation prognostic model. (A) Rank of prognostic index and distribution of groups. (B) Survival status of patients in different risk groups. (C) Heatmap of expression profiles of included immune-related genes.

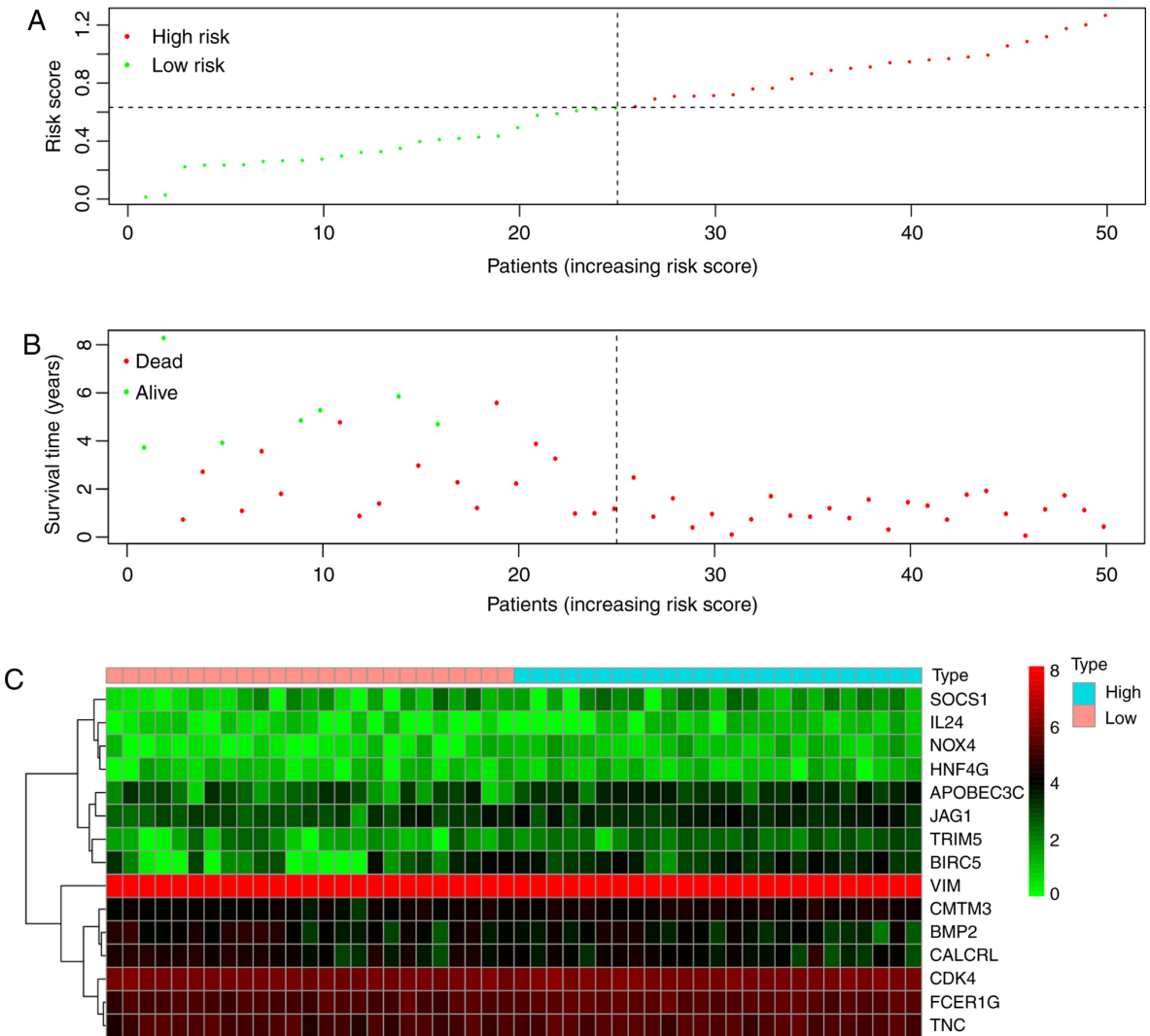


Figure S2. Survival analysis of GSE43378 validation model in glioma and glioblastoma. (A) Patients with glioma in the high-risk group had a lower survival probability, and (B) patients with glioblastoma in the high-risk group had a lower survival probability. (C) Univariate Cox regression analysis and (D) multivariate Cox regression analysis of glioma using the GSE43378 dataset.

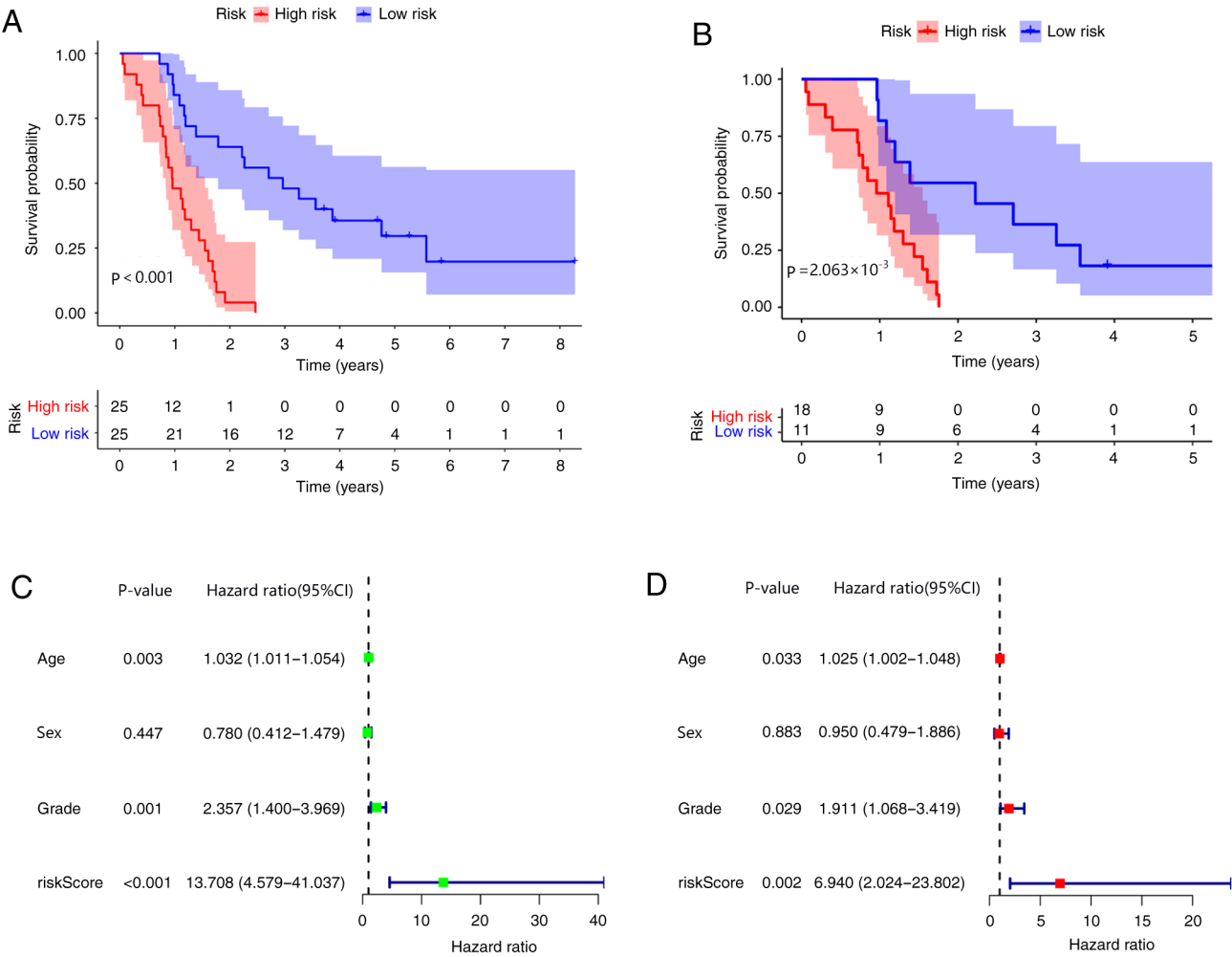


Figure S3. ROC curve and nomogram of GSE43378 prognostic model in glioma. (A) ROC curve of GSE43378 model. (B) Nomogram of GSE43378 model. AUC, area under the curve; ROC, receiver operating characteristic.

