

Figure S1. Sorafenib upregulates IL-6 in HCCLM3-wt and HepG2-wt cells, as revealed by ELISA analysis *in vitro* and immunohistochemistry *in vivo*. (A and B) ELISA revealed that sorafenib upregulated IL-6 in HCCLM3-wt and HepG2-wt cell supernatant (\*\*\* $P < 0.0001$  and \*\*\* $P < 0.0001$ , respectively). (C) Immunohistochemical assay revealed that intratumoral IL-6 was upregulated following sorafenib administration (\*\*\* $P < 0.0001$ ). IL-6, interleukin-6; HCC, hepatocellular carcinoma; wt, wild-type.

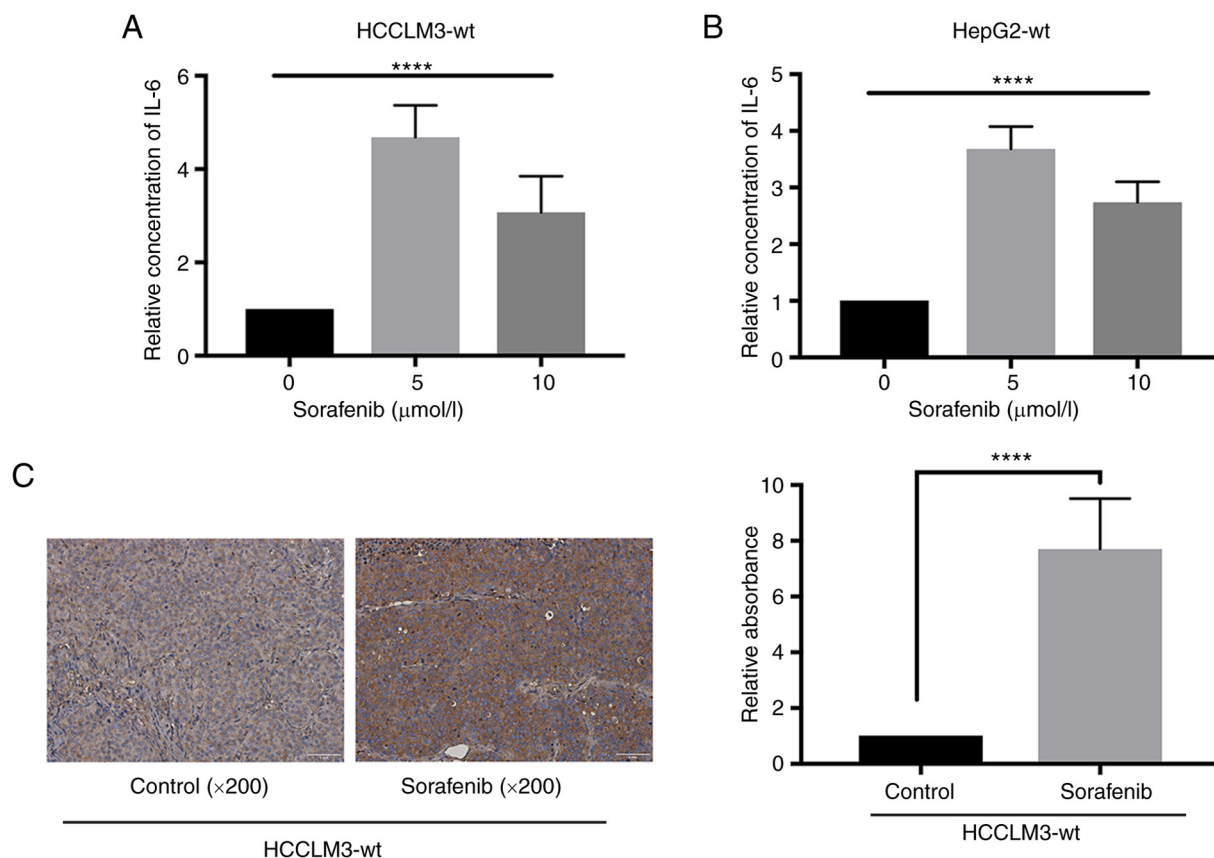


Figure S2. Exogenous IL-6 increases the metastatic ability of HCCLM3 cells, as revealed by Transwell assay and western blot analysis. (A) Exogenous IL-6 increased the metastatic ability of HCCLM3-wt cells, as revealed by Transwell assay ( $^{**}P<0.01$ ). (B) Exogenous IL-6 induced EMT in HCCLM3-wt cells. Exogenous IL-6 downregulated E-cadherin and upregulated N-cadherin, vimentin and Snail in HCCLM3-wt cells (all  $^{****}P<0.0001$ ). IL-6, interleukin-6; HCC, hepatocellular carcinoma; wt, wild-type; EMT, epithelial-mesenchymal transition.

