

Figure S1. miR-34b-5p reduces RB cell migration and invasion. (A) Migration and (B) invasion assays were performed in Y79 and Weri-Rb-1 RB cells transfected with miR-34b-5p or control miR (magnification, x400). * $P < 0.05$ vs. control miR. miR, microRNA; RB, retinoblastoma.

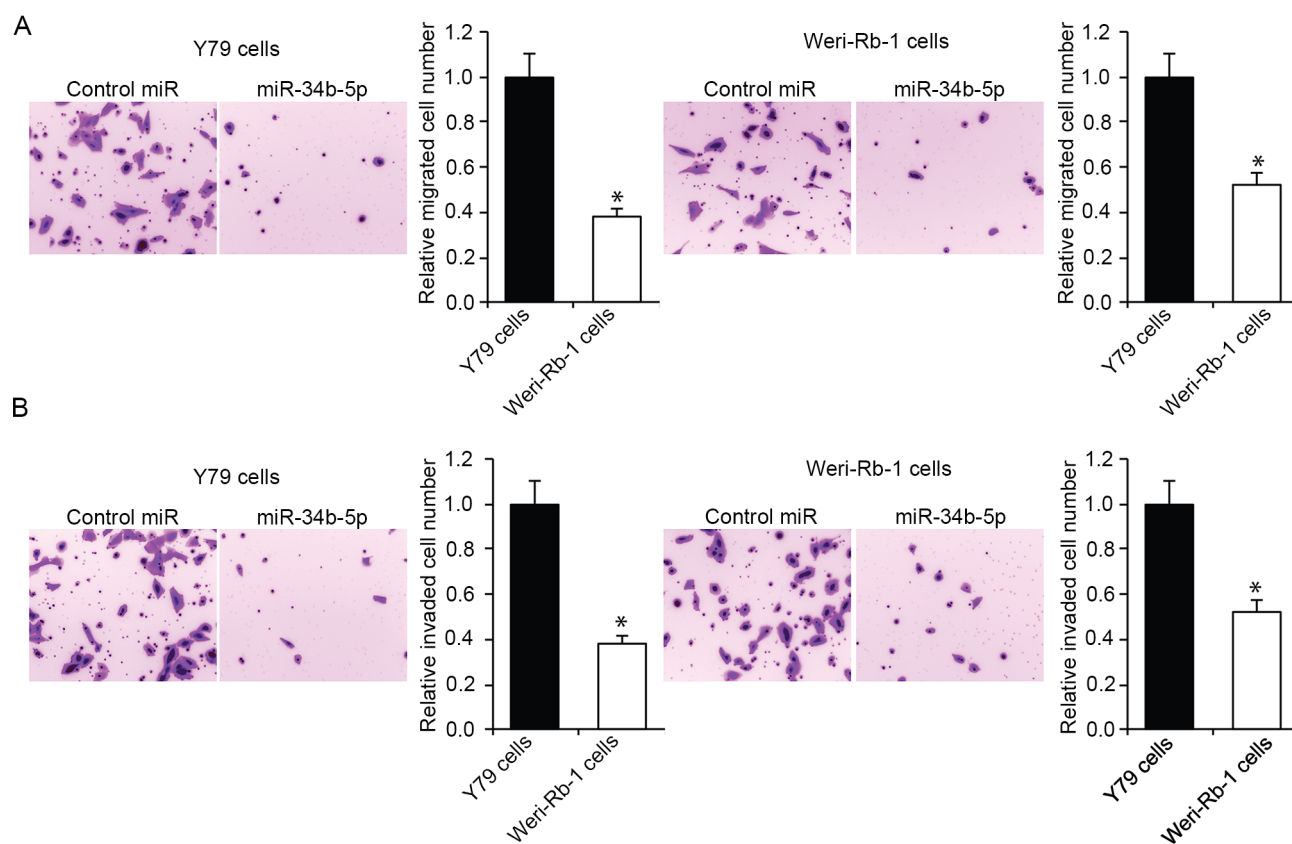


Figure S2. Expression of Notch1 and Notch2 in RB cells after plasmid transfection. Overexpression of Notch1 and Notch2 in Y79 RB cells following transfection with Notch1 or Notch2 plasmid was verified by western blotting. RB, retinoblastoma. The density of CD133, Sox-2 and Nanog was quantified relative to β -actin. * $P < 0.05$ vs. Vector.

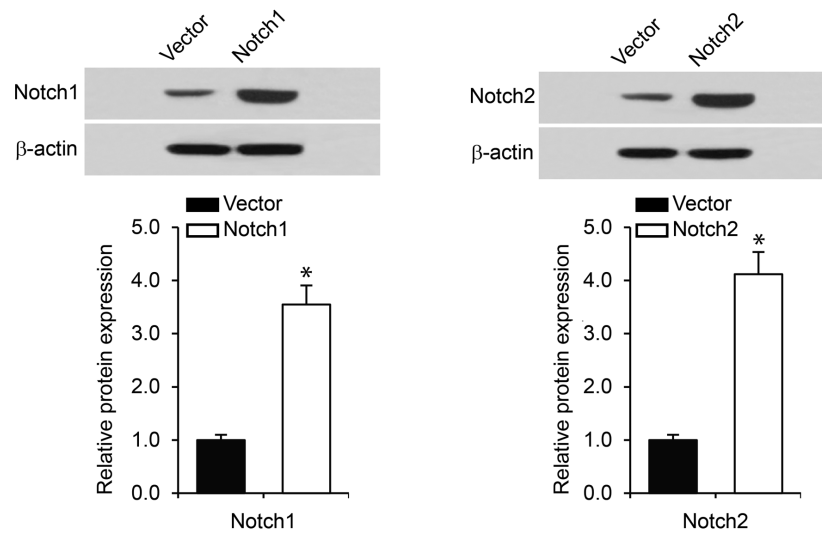


Table SI. Clinical characteristics of the patients with retinoblastoma.

Case no.	Sex	Age, months	Optical nerve invasion	Choroidal invasion	Extraocular invasion	Differentiation
1	Male	23	Yes	Yes	No	Poor
2	Male	25	No	No	No	Moderate
3	Female	13	Yes	Yes	No	Moderate
4	Male	4	Yes	Yes	No	Poor
5	Male	16	Yes	Yes	No	Poor
6	Male	22	Yes	Yes	No	Poor
7	Female	7	Yes	No	No	Moderate
8	Male	19	Yes	No	No	Poor
9	Female	8	Yes	Yes	No	Moderate
10	Female	10	Yes	Yes	No	Poor