

Figure S1. Synthesis of HMPH from curcumin. Reagents and conditions: (i) NaHB_4 , THF, room temperature; (ii) *p*-toluenesulphonic acid, THF, reflux. THF, tetrahydrofuran. HMPH, 1,7-bis(4-hydroxy-3-methoxyphenyl)-1,4,6-heptatrien-3-one.

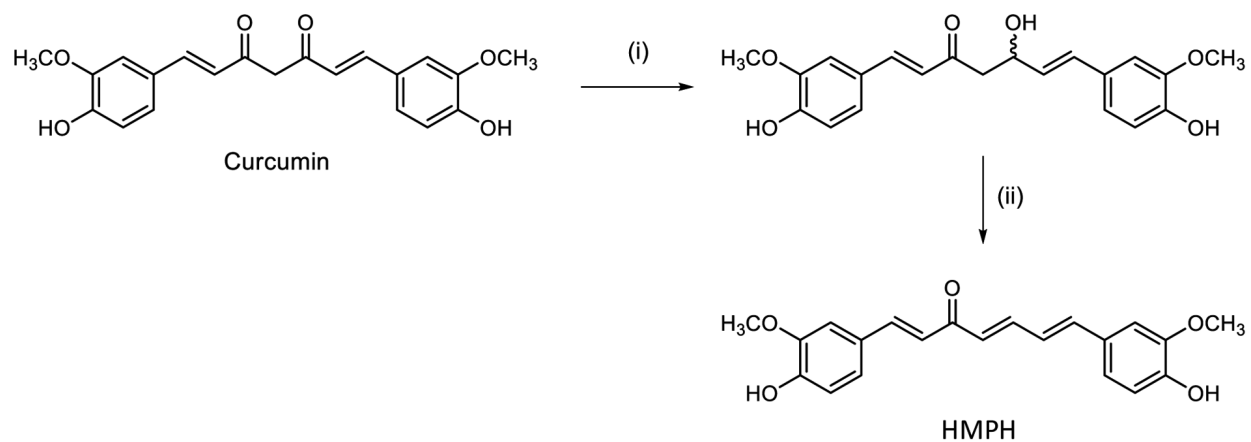


Figure S2. ^1H NMR spectrum of 1,7-bis(4-hydroxy-3-methoxyphenyl)-1,4,6-heptatrien-3-one in CDCl_3 .

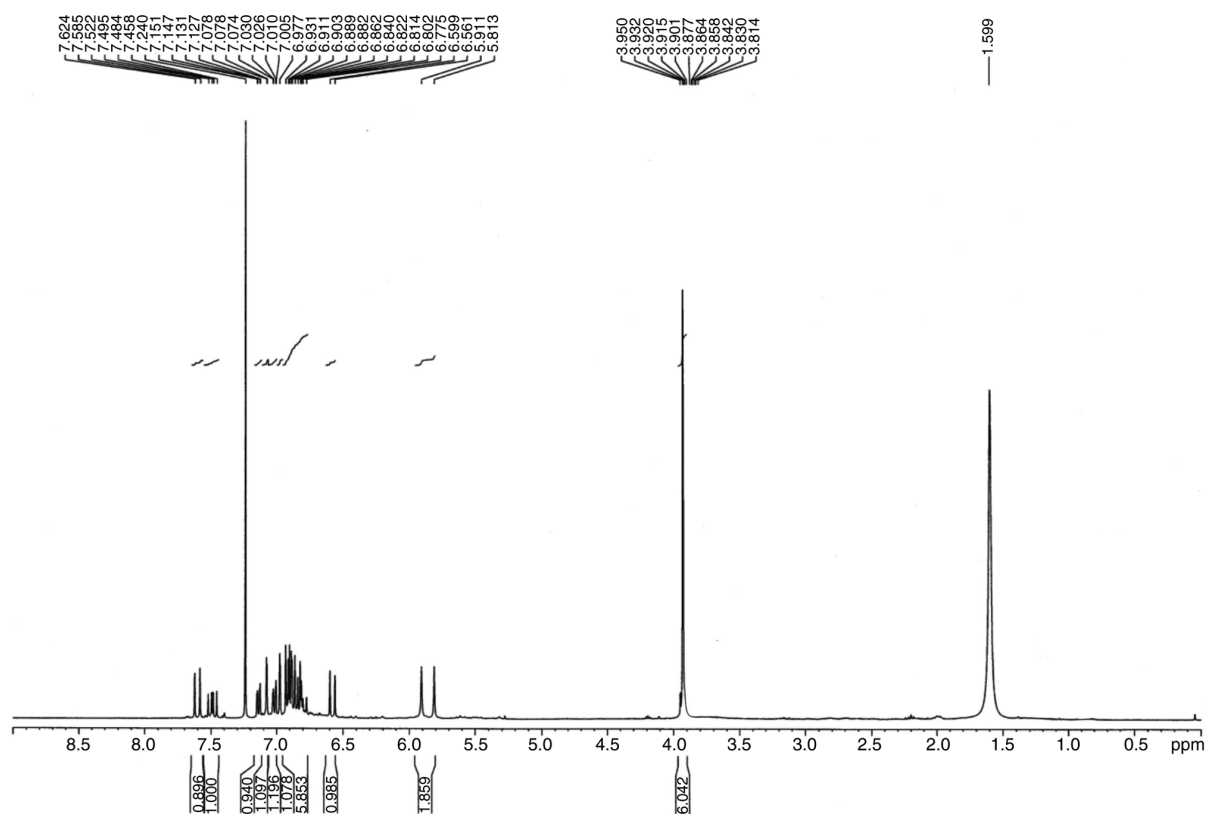


Figure S3. ^{13}C NMR spectrum of 1,7-bis(4-hydroxy-3-methoxyphenyl)-1,4,6-heptatrien-3-one in CDCl_3 .

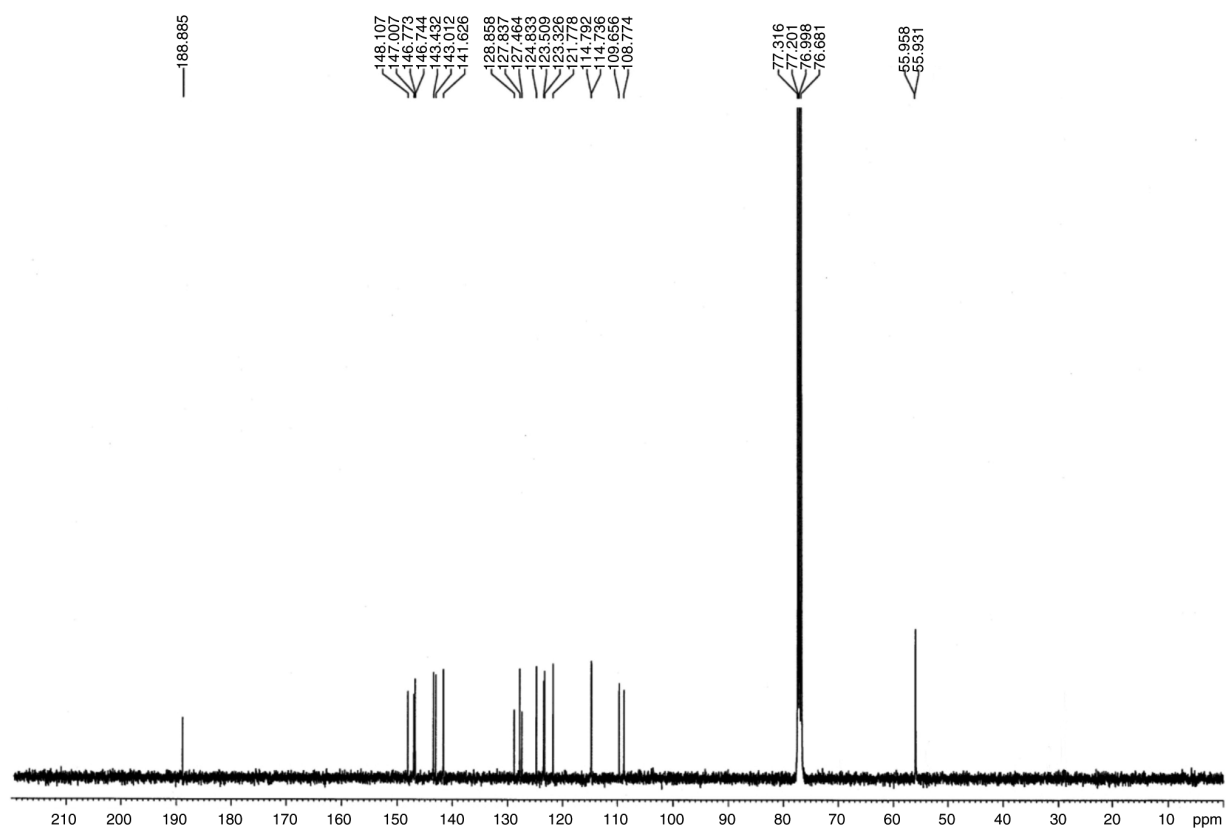


Figure S4. Immunofluorescence micrographs of p65 NF- κ B translocation in RAW264.7 cells. RAW264.7 cells were grown on coverslips under standard conditions without any treatment (control) or with LPS treatment alone (10 ng/ml) for 15 min. The effects of test compounds on p65 NF- κ B translocation were performed by treating cells with BAY 11-7082 at 10 μ M, curcumin at 20 μ M and HMPH at 20 μ M for 1 h followed by LPS stimulation (10 ng/ml) for 15 min. Nuclear p65 NF- κ B translocation was detected using an anti-p65 NF- κ B antibody and an Alexa Fluor-488-conjugated secondary antibody (green fluorescence). The nucleus was stained with PI (red fluorescence). Scale bar, 25 μ m. The images were acquired by confocal laser scanning microscopy. LPS, lipopolysaccharide; PI, propidium iodide; NF- κ B, nuclear factor- κ B. HMPH, 1,7-bis(4-hydroxy-3-methoxyphenyl)-1,4,6-heptatrien-3-one.

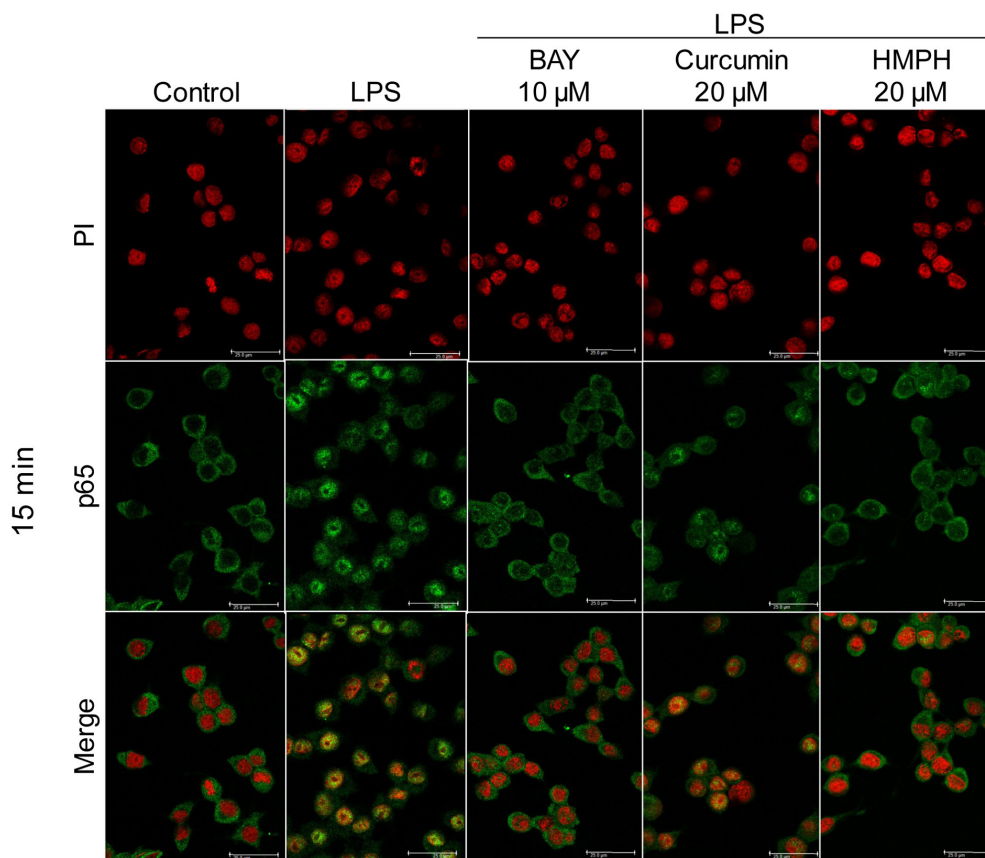


Figure S5. Immunofluorescence micrographs of p65 NF- κ B translocation in RAW264.7 cells. RAW264.7 cells were grown on coverslips under standard conditions without any treatment (control) or with LPS treatment alone (10 ng/ml) for 30 min. The effects of test compounds on p65 NF- κ B translocation were performed by treating the cells with BAY 11-7082 at 10 μ M, curcumin at 20 μ M and HMPH at 20 μ M for 1 h followed by LPS stimulation (10 ng/ml) for 30 min. Nuclear p65 NF- κ B translocation was detected with an anti-p65 NF- κ B antibody and an Alexa Fluor-488-conjugated secondary antibody (green fluorescence). The nucleus was stained with PI (red fluorescence). Scale bar, 25 μ m. The images were acquired by confocal laser scanning microscopy. LPS, lipopolysaccharide; PI, propidium iodide; NF- κ B, nuclear factor- κ B. HMPH, 1,7-bis(4-hydroxy-3-methoxyphenyl)-1,4,6-heptatrien-3-one.

