

Figure S1. IHC of p53 in normal liver and tumor tissue. Representative IHC images of p53 did not demonstrate any difference between normal liver and tumor tissue. IHC, immunohistochemistry.

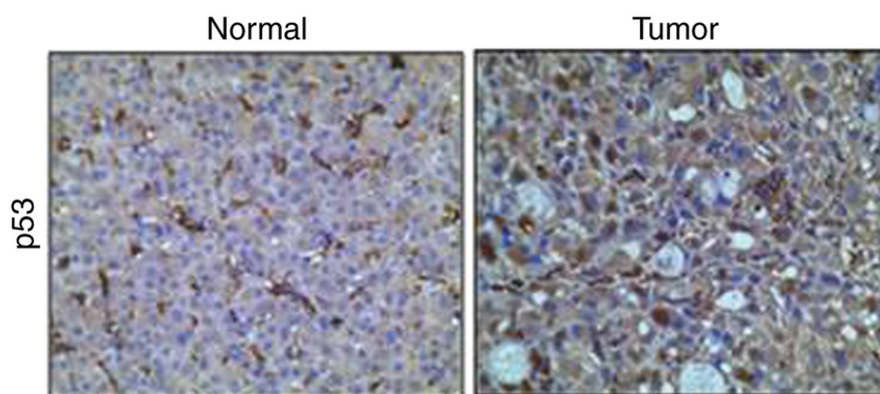


Table SI. IRS scores.

A (percentage of positive cells)	B (intensity of staining)	IRS (AxB)
0	0=No color reaction	0-1=Negative
1=<10%	1=Mild reaction	2-3=Mild
2=10-50%	2=Moderate reaction	4-8=Moderate
3=51-80%	3=Intense reaction	9-12=Strongly positive
4=>80%		
IRS ranged from 0-12 as a product of multiplication between the positive-cell proportion score (0-4) and staining intensity score (0-3). Adapted from Fedchenko and Reifenrath (37). IRS, immunoreactive score.		