

Figure S1. Tissue samples were used to examine PGP9.5 expression by immunohistochemistry. PGP9.5 was used as a neuronal marker. (A) Normal breast tissue. (B and C) Ductal carcinoma *in situ*. (D) Invasive ductal carcinoma. Magnification, x40.

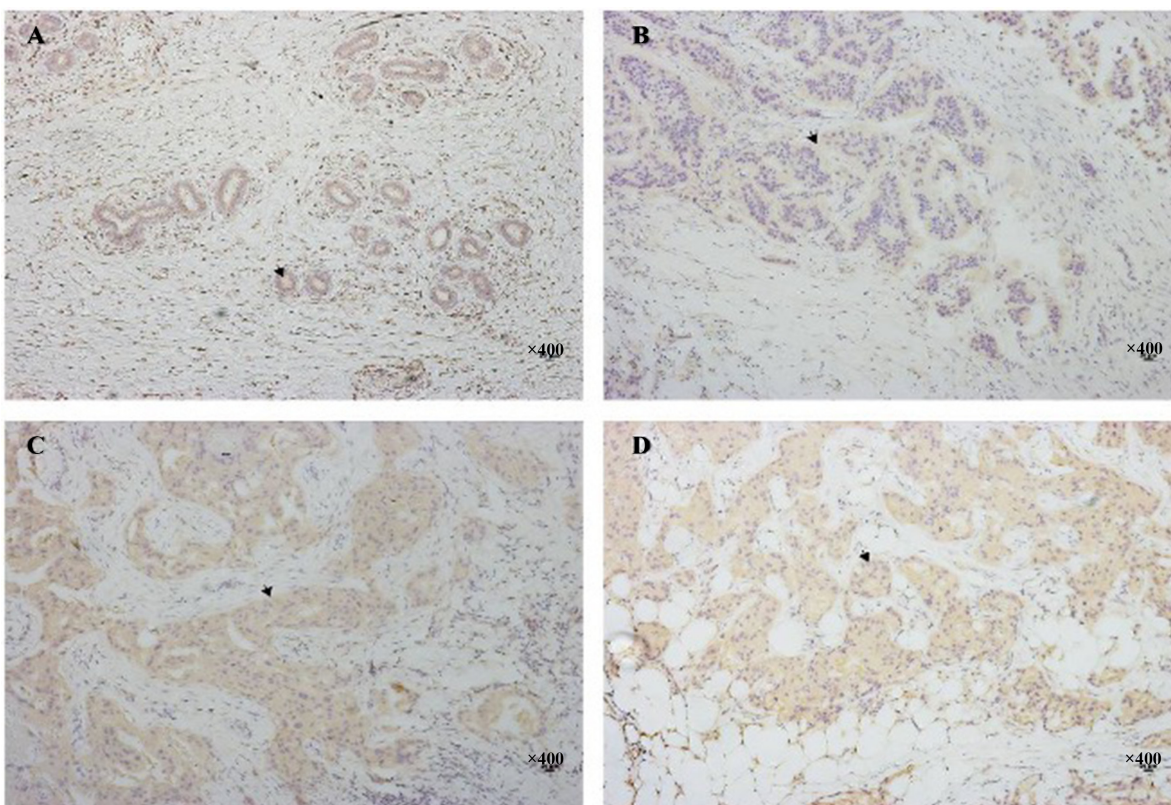


Figure S2. Preliminary selection of CRISPR/Cas9-edited cell by PCR and gel electrophoresis. Flow cytometry-sorted cells were preliminary selected by PCR and 2% agarose gel electrophoresis (visualized by ethidium bromide), and CRISPR/Cas9-edited cells were verified by sequencing. M, marker (DL2000 DNA ladder); 1-16, PCR production (726 bp).

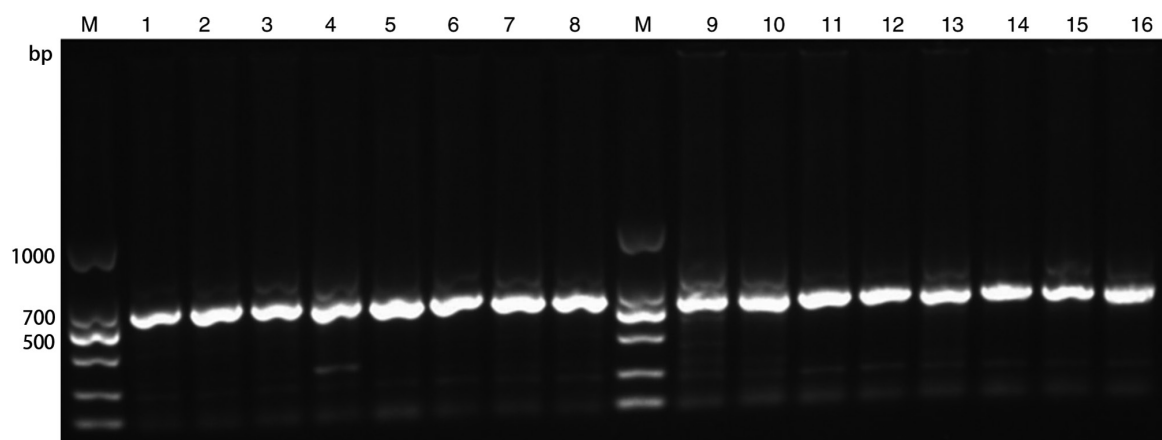


Table SI. Characteristics of patients.

Parameters	Number
Age, ≤ 50 years	44
Age, > 50 years	48
Tumor size, ≤ 2 cm	58
Tumor size, > 2 cm	34
Pathological grade, I	29
Pathological grade, II-III	63
Ductal carcinoma <i>in situ</i>	10
Invasive ductal carcinoma	82
Metastasis to axillary lymph nodes	12
Vascular invasion	1