

Figure S1. (A and B) Images of H&E-stained tumor tissues (scale bar, 200 μm). Ki-67 expression levels were determined using immunohistochemistry. Representative images with (C) 1%, (D) 5%, (E) 15% and (F) 25% Ki-67 (scale bars, 100 μm).

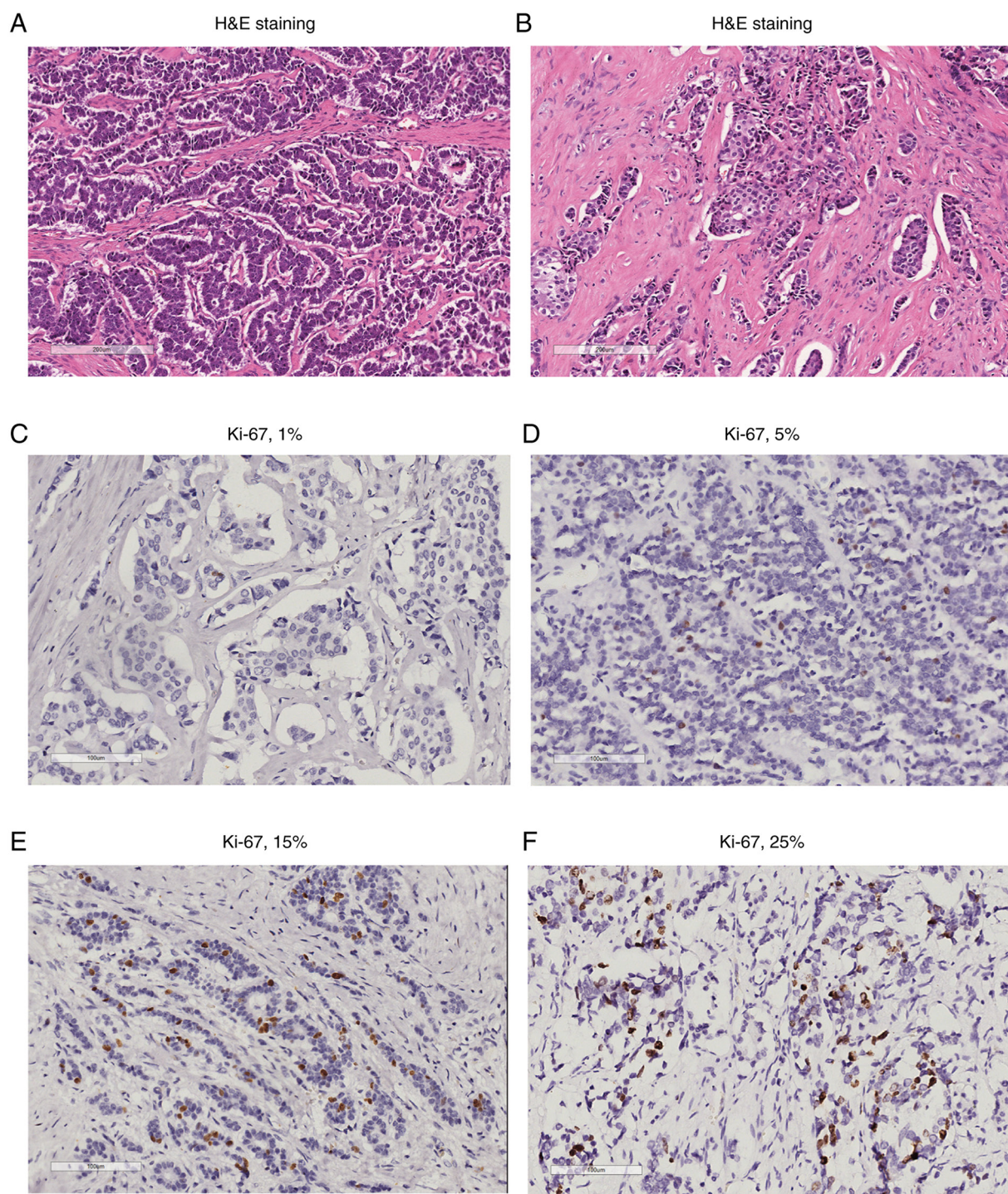


Figure S2. Summary and visualization of maf files using the maftools package in R software. (A) Variant classification. (B) Variant type. (C) SNV class. (D) The count of variants per sample. (E) Variant classification summary. (F) Top 10 mutated genes. The colors of variant classification in subfigure D, E and F are in accordance with subfigure A. Del, deletion; Ins, insertion; SNP, single nucleotide polymorphism; SNV, single nucleotide variant.

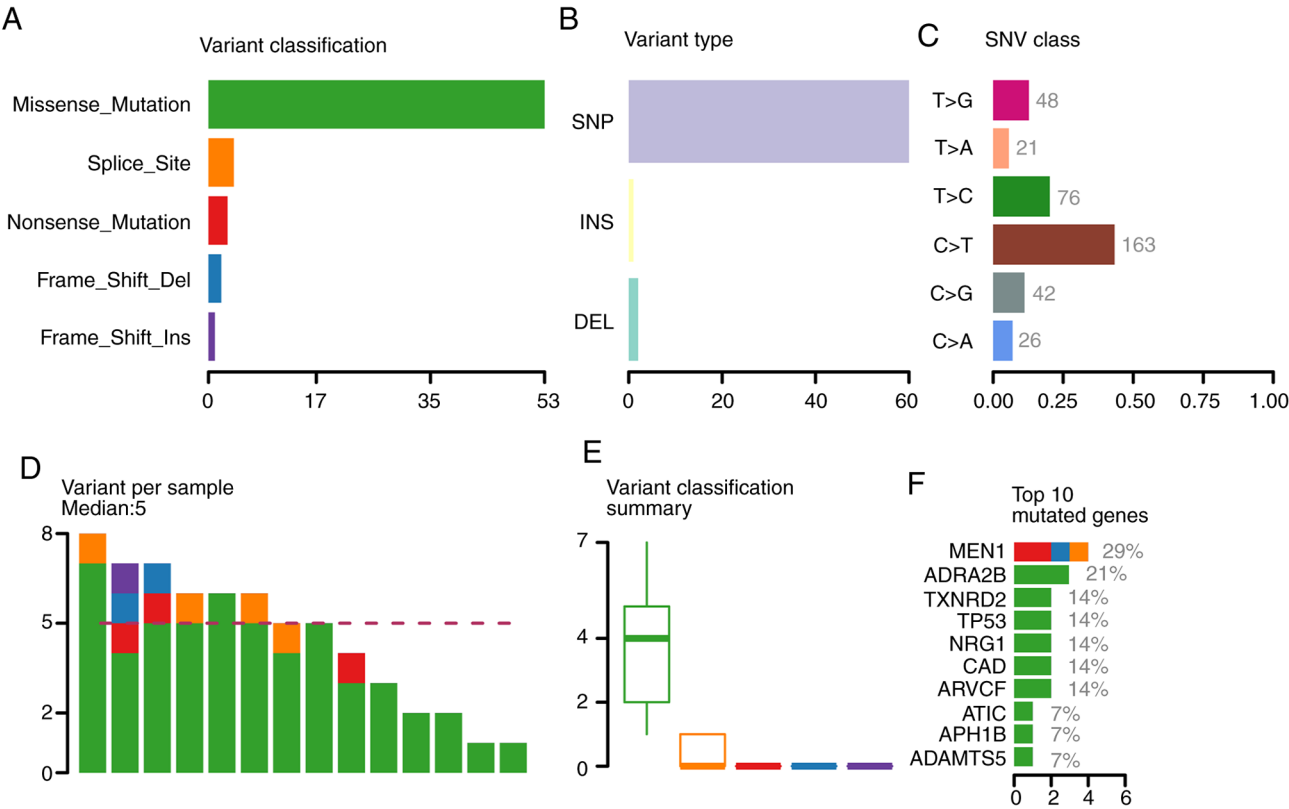


Figure S3. Proportion of mutated genes which were mutated in ≥ 2 samples. Del, deletion; MEN1, menin 1; ADRA2B, adrenoceptor alpha 2B; ARVCF, ARVCF delta catenin family member; CAD, carbamoyl-phosphate synthetase 2, aspartate transcarbamylase, and dihydroorotase; NRG1, neuregulin 1; TP53, tumor protein p53; TXNRD2, thioredoxin reductase 2.

