

Figure S1. Effects of OSS-128167 treatment on insulin levels, blood glucose and HW/BW of STZ-induced diabetic mice. (A) Flow chart showing generation of the type 1 diabetic mouse model, drug intervention and fasting blood glucose monitoring. Effects of OSS-128167 treatment on (B) blood glucose, (C) insulin levels and (D) HW/BW of STZ-induced diabetic mice. n=6-9 per group. **P<0.01, ***P<0.001 vs. Vehicle; blue NS represents P≥0.05, OSS-20 (mg/kg) vs. STZ-DM1; purple NS represents P≥0.05, OSS-50 (mg/kg) vs. STZ-DM1. STZ, streptozotocin; STZ-DM1, STZ-induced diabetes; HW/BW, heart weight/body weight.

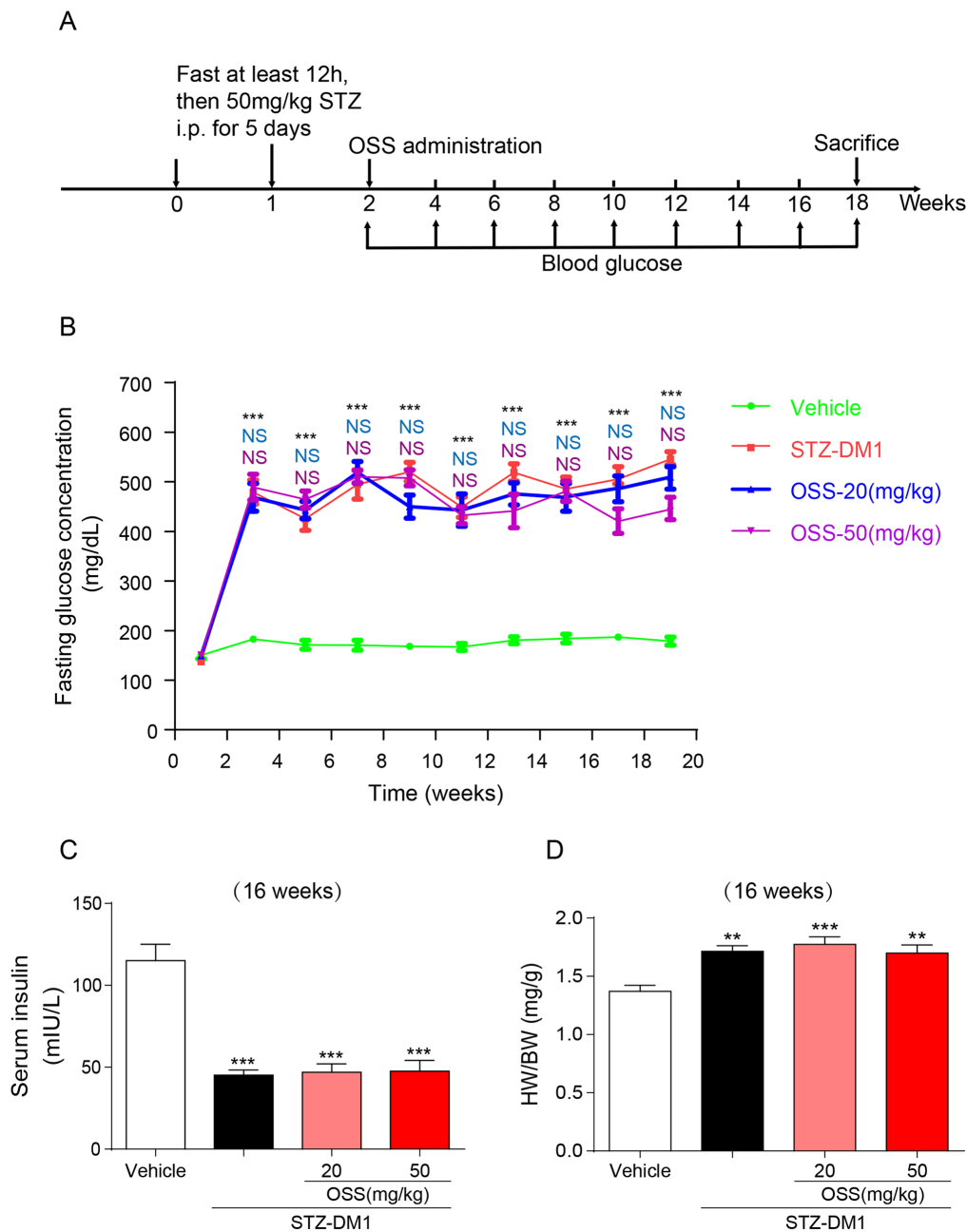


Table SI. Primer sequences for reverse transcription-quantitative PCR.

Primer	Species	Sense (5'-3')	Antisense (5'-3')
TNF- α	Mouse	TGATCCGCGACGTGGAA	ACCGCCTGGAGTTCTGGAA
COL-1	Rat	TGGCCTTGGAGGAACTTTG	CTTGGAACCTTGTGGACCAG
CTGF	Rat	ACTATGATGCGAGCCAACCTGC	TGTCCGGATGCACTTTTTGC
TGF- β	Rat	GTTCTATGCGACTTGCCCCT	AATGTGGTGCAGCCCATGTA
TNF- α	Rat	TACTCCAGGTTCTCTCAAGG	GGAGGCTGACTTTCTCCTGGTA
β -actin	Mouse	CCGTGAAAAGATGACCCAGA	TACGACCAGAGGCATACAG
β -actin	Rat	AAGTCCCTCACCTCCAAAAG	AAGCAATGCTGTCACCTTCCC

TNF- α , tumor necrosis factor- α ; COL1, collagen 1; CTGF, connective tissue growth factor; TGF- β , transforming growth factor β .