

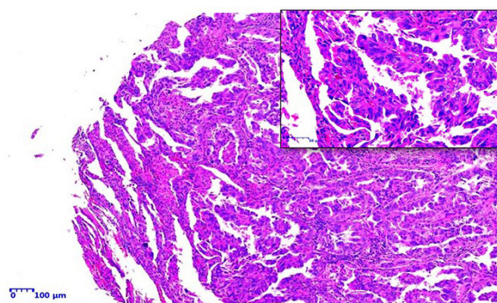
Figure S1. Preparation of the lung cancer TMA. (A) Images of the TMA. Hematoxylin and eosin staining of (B) tumor and (C) normal tissue. TMA, tissue microarray.

A



T N T N T N T N T N T N

B



C

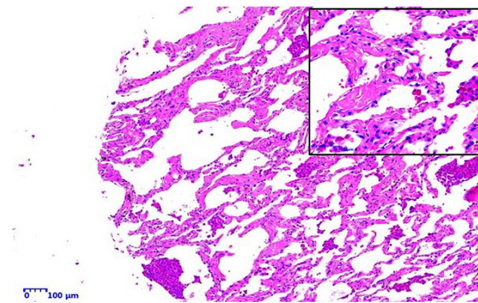


Figure S2. Synthetic siRNA reduces the expression level of E2F3 in the A549 cell line. The (A) mRNA and (B) protein expression level of E2F3 in the A549 cell line following transfection with 3 siRNAs targeting E2F3 were detected using reverse transcription-quantitative PCR and western blot analysis, respectively. The experiments were repeated three times. The data was analyzed using an one-way ANOVA with Tukey's HSD post hoc test. * $P<0.05$, *** $P<0.001$.

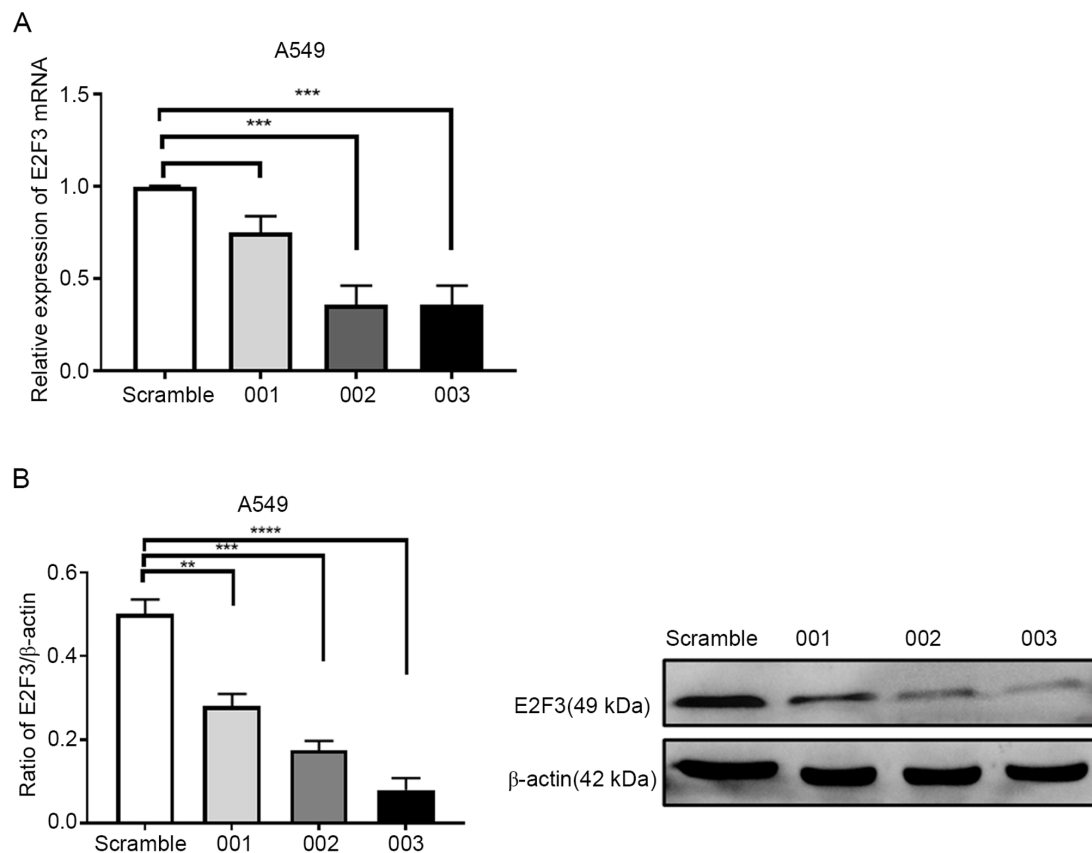


Figure S3. Protein-protein interaction network of E2F3 and the biological processes. (A) The protein-protein interaction network of E2F3 generated using the GeneMANIA online tool. (B) Bar chart displaying the 8 biological processes of the genes that had protein-protein interactions with E2F3. GO, Gene Ontology; PANTHER, Protein Analysis THrough Evolutionary Relationships.

