

Figure S1. Immunohistochemical staining intensity of SLP-2 in pancreatic cancer. The staining intensity was scored as (A) 0 (negative), (B) 1 (weak), (C) 2 (moderate), or (D) 3 (strong). SLP-2, stomatin-like protein 2.

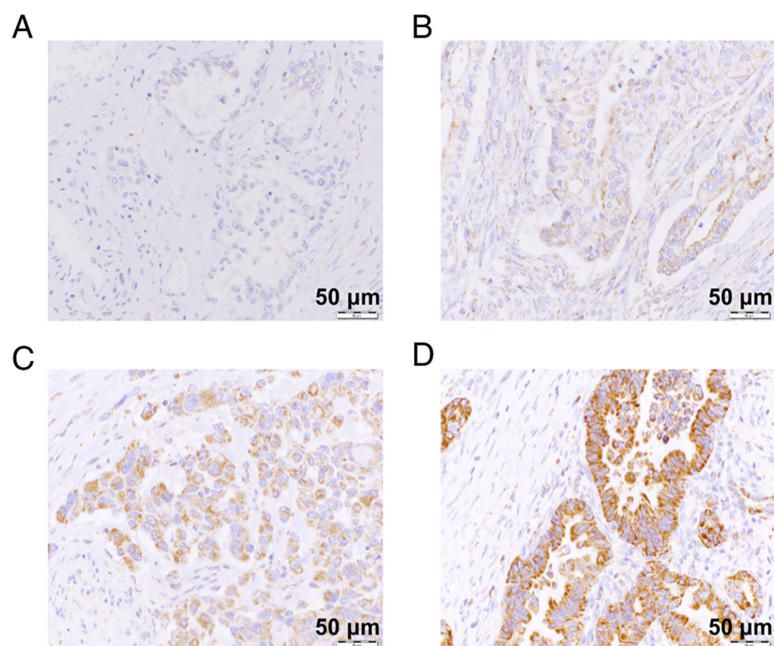


Figure S2. Unmodified western blots. (A) SLP-2 expression, (B) GFPT-2 expression. SLP-2, stomatin-like protein 2; GFPT2, glutamine-fructose-6-phosphate transaminase 2.

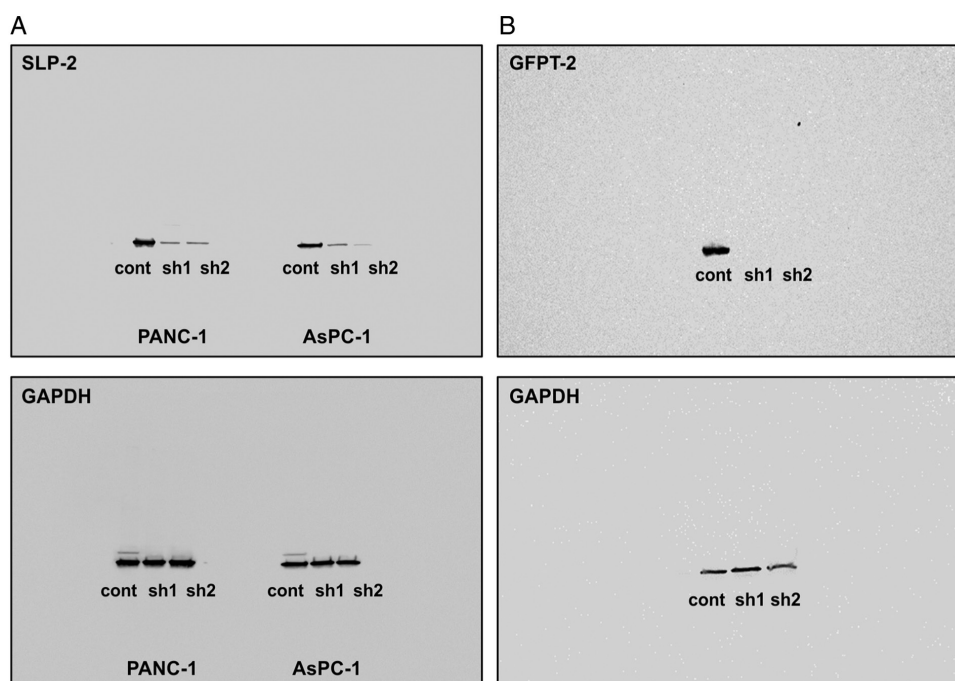


Figure S3. Proliferation of pancreatic cancer cells after SLP-2 suppression. (A) Proliferation curve of AsPC-1 cells. No significant difference was revealed among three groups (cont, sh1 and sh2) during the 4-day growth rate ($P=0.944$). (B) Proliferation curve of PANC-1 cells. No significant difference was revealed among three groups (cont, sh1 and sh2) during the 4-day growth rate ($P=0.532$). SLP-2, stomatin-like protein 2; cont, control; sh, short hairpin.

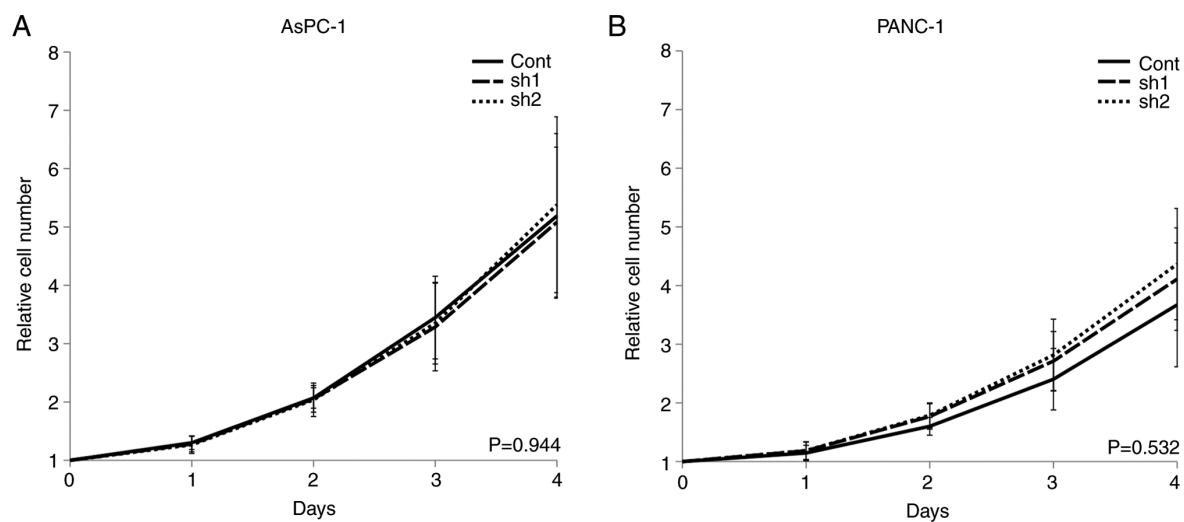


Figure S4. SLP-2 inhibition does not alter the sensitivity of PC cells to gemcitabine. (A) AsPC-1 cells exhibited no significant differences in the IC_{50} values among three groups (cont, sh1 and sh2) ($P=0.713$). (B) PANC-1 cells exhibited no significant differences in the IC_{50} values among three groups (cont, sh1 and sh2) ($P=0.989$). SLP-2, stomatin-like protein 2; cont, control; sh, short hairpin.

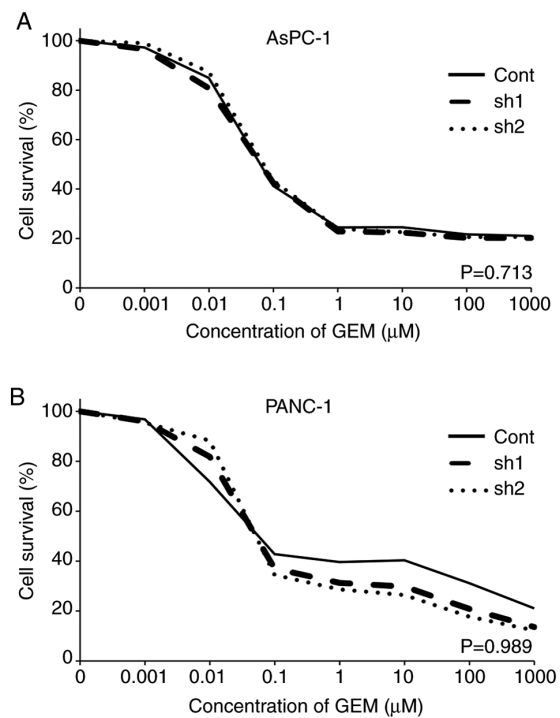


Figure S5. Comparison of the expression of SLP-2 with resectability status and NAC status. (A) Non-NAC patients. There was no significant difference in SLP-2 expression among three groups (R, BR and UR) ($P=0.839$). (B) NAC patients. There was no significant difference in SLP-2 expression among three groups (R, BR and UR) ($P=0.534$). (C) Comparison of SLP-2 expression between non-NAC and NAC patients. SLP-2 expression was significantly increased in NAC patients ($P=0.019$). SLP-2, stomatin-like protein 2; NAC, neoadjuvant chemotherapy; R, resectable; BR, borderline resectable; UR, unresectable.

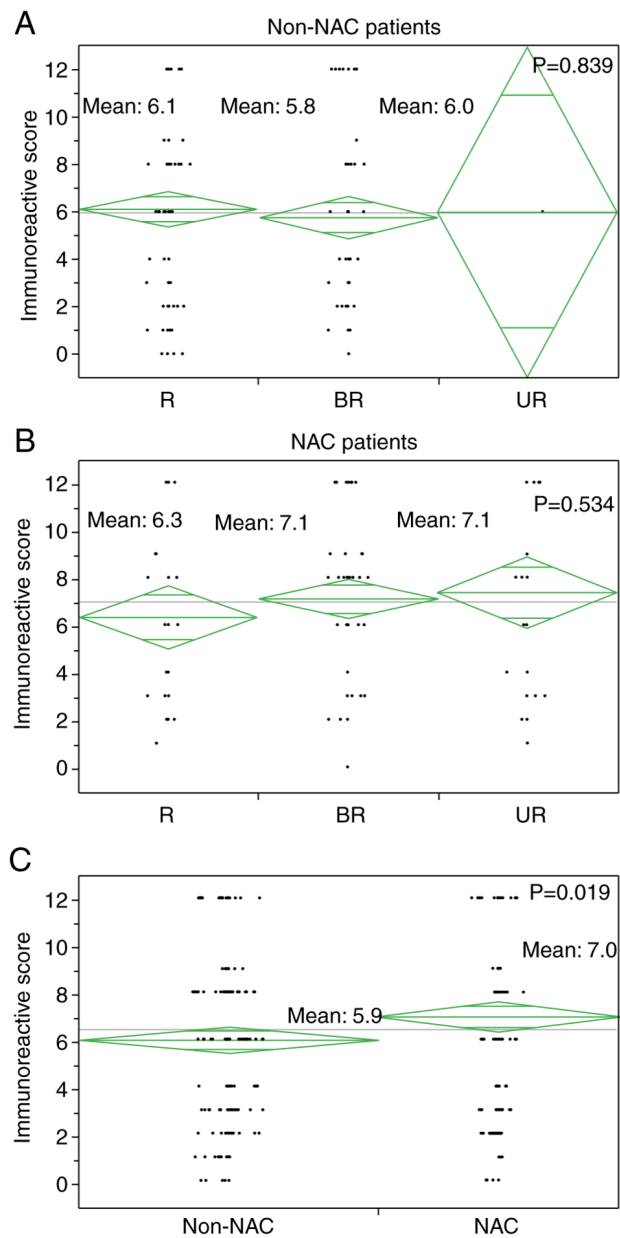


Table SI. Sequences of shRNA and primers used.

Category	Sequences
shRNA1	Sense: 5'GATCCGGCTAAAGCTGAAGCTATTCTGTGAAGCCACAGATGGGAATAGCTTCAGCTCCTTTTTTA3' Antisense: 5'AGCTTAAAAAAGGCTAAAGCTGAAGCTATTCCCATCTGTGGCTTCACAGAATAGCTTCAGCTTTAGCCG3'
shRNA2	Sense: 5'GATCCGAACCTTTAGTCGTGTAATACTGTGAAGCCACAGATGGGTATTACACGACTAAAGTTCTTTTTTA-3' Antisense: 5'AGCTTAAAAAAGAACTTTAGTCGTGTAATACCCATCTGTGGCTTCACAGTATTACACGACTAAAGTTCG-3'
SLP-2	F: 5'-CAGTATGTCAGCGCGTTCTCC-3' R: 5'-AGGGCTCCATATACACCCAT-3'
GFPT2	F: 5'-TGGGAAACTCTCCATTCACC-3' R: 5'-TCATGATTTGCTGCAGTTCC-3'
GAPDH	F: 5'-GCACCGTCAAGGCTGAGAAC-3' R: 5'-TGGTGAAGACGCCAGTGGA-3'

SLP-2, stomatin-like protein 2; GFPT2, glutamine-fructose-6-phosphate transaminase 2; sh, short hairpin; F, forward; R, reverse.