

Figure S1. PRP smears with Wright Giemsa staining. (A) A large number of platelets presenting normal morphology (black arrow) were observed on PRP smears. Several red blood cells (white arrowhead) and neutrophils (black arrowhead) were occasionally seen surrounding the platelets. (B) After coating and activation of PRP, aggregated platelets (yellow arrow) and collagen (red arrowhead) were observed on parallel plate culture dishes. PRP, platelet rich plasma.

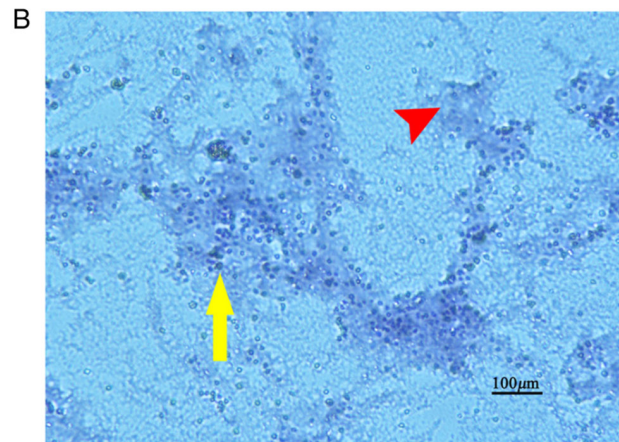
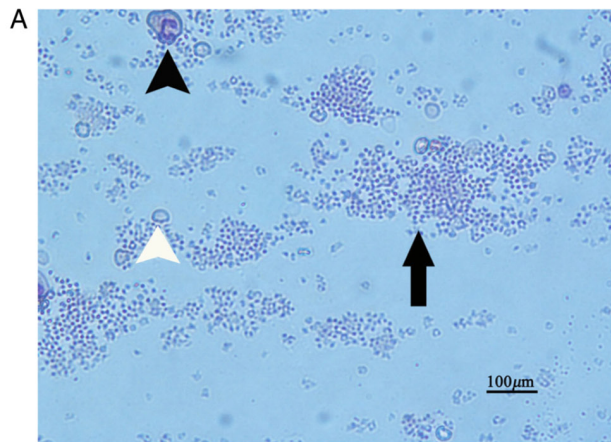


Figure S2. Identification of platelet activation. (A) Aggregated platelets (black arrow) were observed on the parallel plate culture dishes. (B) CD62 positive green fluorescent signals were detected from activated platelets (white arrow).

