

Figure S1. H&E images of healthy kidney and clear cell renal cell carcinoma tissues (magnification, x200).

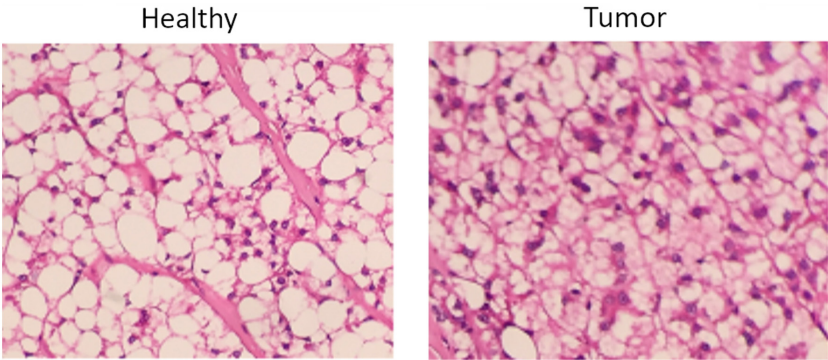


Figure S2. Transfection efficiency of miR-375 mimics and inhibitor and YAP1 overexpressing vector. The expression of miR-375 was determined in Caki-1 and A498 cells transfected with (A) miR-NC mimics or miR-375 mimics and (B) miR-NC or miR-375 inhibitor. Caki-1 and A498 cells were transfected with empty vector or YAP1 overexpressing vector, and (C) the mRNA and (D) protein levels of YAP1 were detected by reverse transcription-quantitative PCR or western blotting, respectively. \*\*P<0.01. NC, negative control; miR, microRNA; YAP1, yes-associated protein 1.

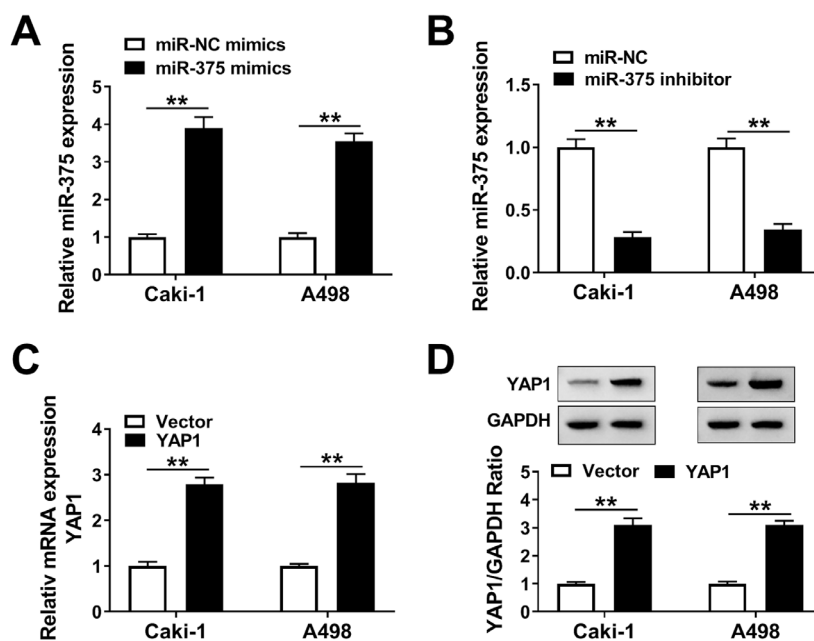


Figure S3. LUCAT1 overexpression promotes the proliferation, migration and invasion of renal cell carcinoma cells. Caki-1 and A498 cells were transfected with vector or LUCAT1 overexpression vector. (A) The expression level of LUCAT1 was measured by reverse transcription-quantitative PCR. Cell proliferation was examined using the Cell Counting Kit-8 assay in transfected (B) Caki-1 and (C) A498 cells. (D) Cell migratory and (E) invasive capabilities were assessed by Transwell assay in transfected Caki-1 and A498 cells. \*\* $P < 0.01$ . LUCAT1, lung cancer-associated transcript 1; OD, optical density.

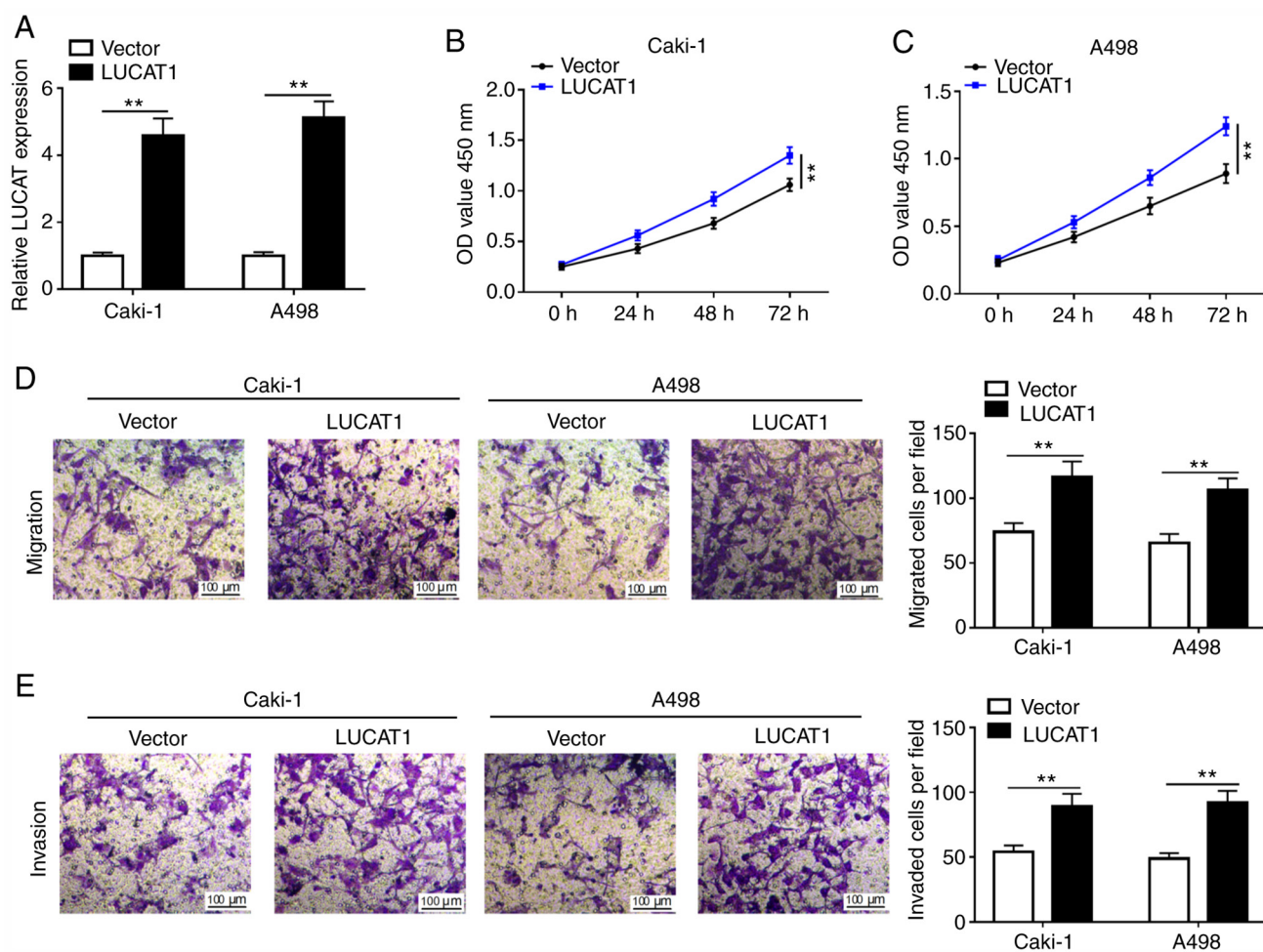


Table SI. Association of clinicopathological features with YAP1 expression in patients with clear cell renal cell carcinoma.

Parameter	Number of cases	YAP1 expression		P-value <sup>a</sup>
		Low (n=29)	High (n=33)	
Sex				
Female	30	15	15	0.622
Male	32	14	18	
Age, years				
≤55	27	14	13	0.482
>55	35	15	20	
Tumor stage				
T1-2	40	24	16	0.007 <sup>b</sup>
T3-4	22	5	17	
Tumor size, cm				
≤4	28	18	10	0.012 <sup>b</sup>
>4	34	11	23	
Lymph node metastasis				
No	36	25	11	<0.001 <sup>b</sup>
Yes	26	4	22	
Distant metastasis				
No	39	21	18	0.146
Yes	23	8	15	

<sup>a</sup>Fisher's exact test or Pearson's  $\chi^2$  test was used as appropriate. <sup>b</sup>P<0.05 was considered to indicate a statistically significant difference. T, tumor; YAP1, yes-associated protein 1.

Table SII. Association of clinicopathological features with miR-375 expression in patients with clear cell renal cell carcinoma.

Parameter	Number of cases	miR-375 expression		P-value <sup>a</sup>
		Low (n=31)	High (n=31)	
Sex				
Female	30	13	17	0.309
Male	32	18	14	
Age, years				
≤55	27	13	14	0.798
>55	35	18	17	
Tumor stage				
T1-2	40	14	26	0.003 <sup>b</sup>
T3-4	22	17	5	
Tumor size, cm				
≤4	28	9	19	0.011 <sup>b</sup>
>4	34	22	12	
Lymph node metastasis				
No	36	14	22	0.040 <sup>b</sup>
Yes	26	17	9	
Distant metastasis				
No	39	24	15	0.018 <sup>b</sup>
Yes	23	7	16	

<sup>a</sup>Fisher's exact test or Pearson's  $\chi^2$  test was used as appropriate. <sup>b</sup>P<0.05 was considered to indicate a statistically significant difference. T, tumor; miR, microRNA.