

Figure S1. Photographs of colon cancer cases in microarray analysis. (A) The gross photographs. (B) The microscopy photographs of surgical specimens stained with hematoxylin and eosin (x100 magnification).

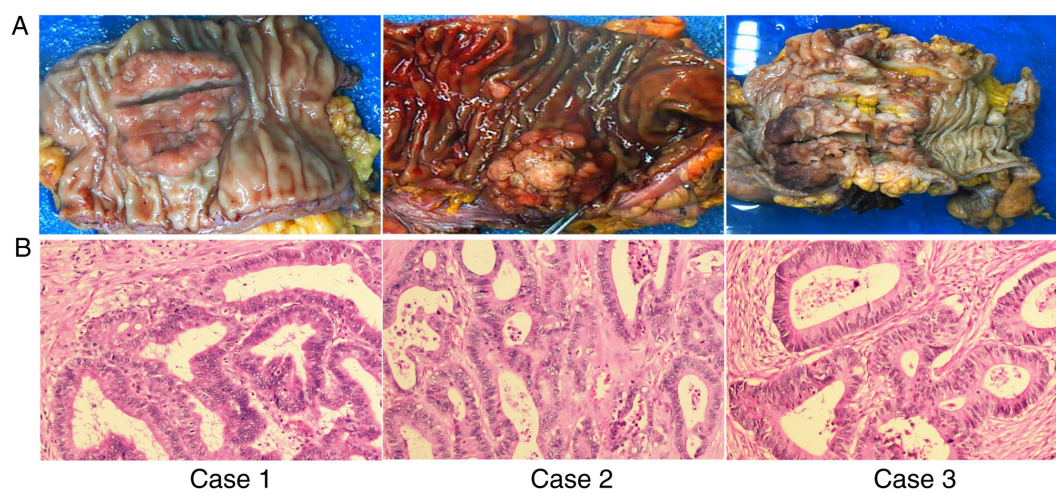


Table SI. Clinicopathological characteristics of three colon cancer cases in the microarray analysis.

Case	Age, years	Sex	Depth of invasion	Tumor grade	Lymph node metastasis	Distant metastasis	TNM stage
Case 1	62	Male	T3	MD	N0	M0	IIA
Case 2	62	Male	T3	MD	N0	M0	IIA
Case 3	64	Male	T3	MD	N0	M0	IIA

MD, moderate differentiation; TNM, Tumor-Node-Metastasis.