

Figure S1. LINC01224 OE inhibits proliferation of endometrial carcinoma cells. (A) Reverse transcription-quantitative PCR analysis of LINC01224 expression in HEC1A and Ishikawa cells transfected with empty control or pcDNA3-LINC01224. (B) Cell Counting Kit-8 and (C) colony formation assays were used to assess the proliferation of HEC1A and Ishikawa cells transfected with empty control or pcDNA3-LINC01224. \*\*P<0.01 vs. empty vector. (D) Relative LINC01224 expression in xenografts. \*\*P<0.01 vs. shNC. Relative miR-485-5p expression following transfection with miR-NC, (E) miR-485-5p mimics or (F) miR-485-5p inhibitor. \*\*P<0.01 vs. miR-NC. miR, microRNA; NC, negative control; OE, overexpression; OD, optical density; sh, short hairpin.

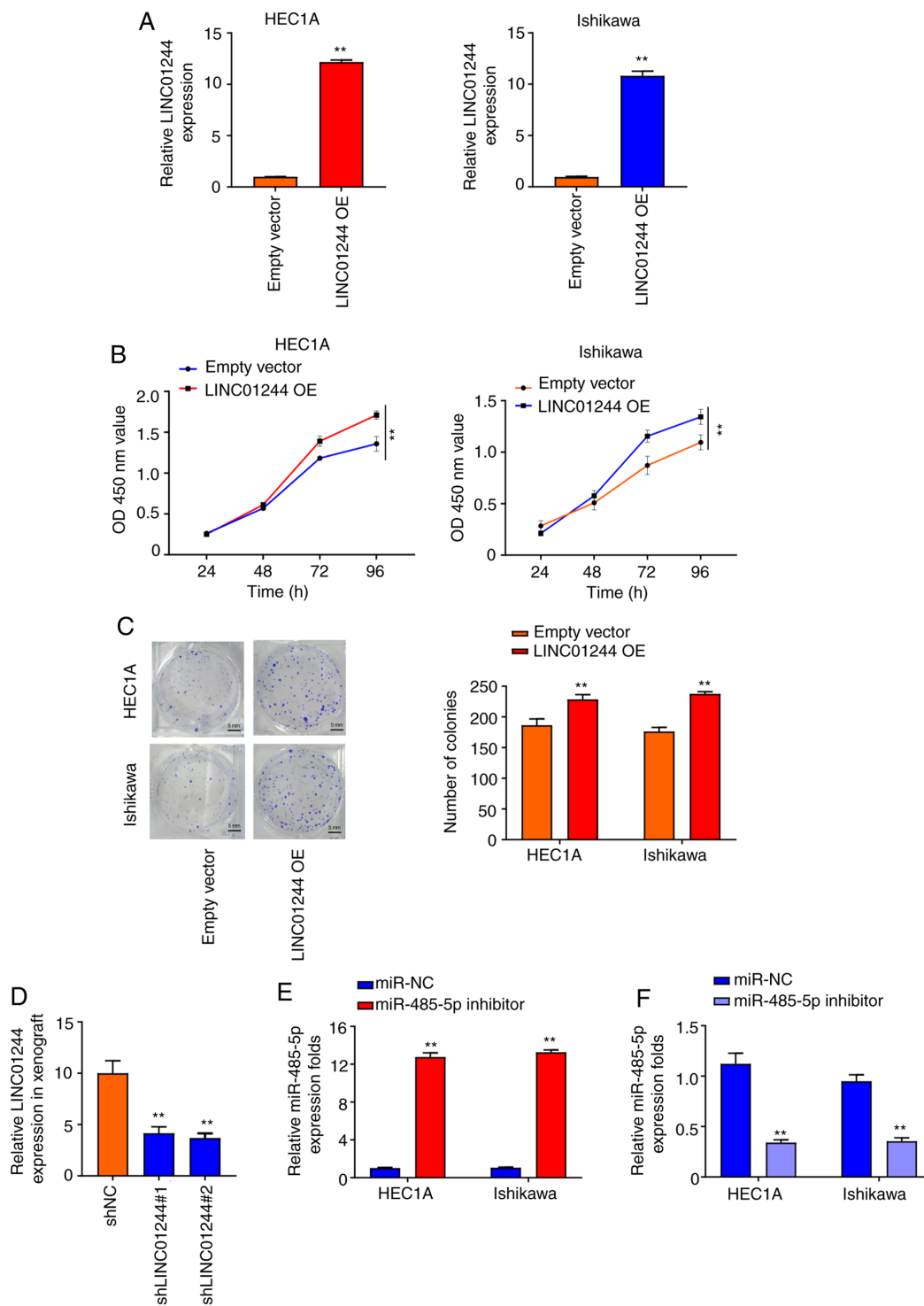


Figure S2. Silencing of LINC01224 inhibits endometrial carcinoma tumor growth. Tumor (A) volume and (B) weight of nude mouse xenografts injected with HEC1A cells transfected with sh-con, shLINC01224#1 or shLINC01224#2. Tumor weight was measured every 7 days for 28 days. (C) Relative mRNA expression levels of LINC01224 in HEC1A xenografts were assessed using reverse transcription-quantitative PCR. (D) Representative western blots of proliferation and apoptosis-associated protein expression levels in HEC1A xenografts.  $\beta$ -actin was the loading control. All data are representative of three independent experiments and expressed as the mean  $\pm$  SD. \*\* $P < 0.01$  vs. sh-con. sh, short hairpin; con, control; PCNA, proliferating cell nuclear antigen.

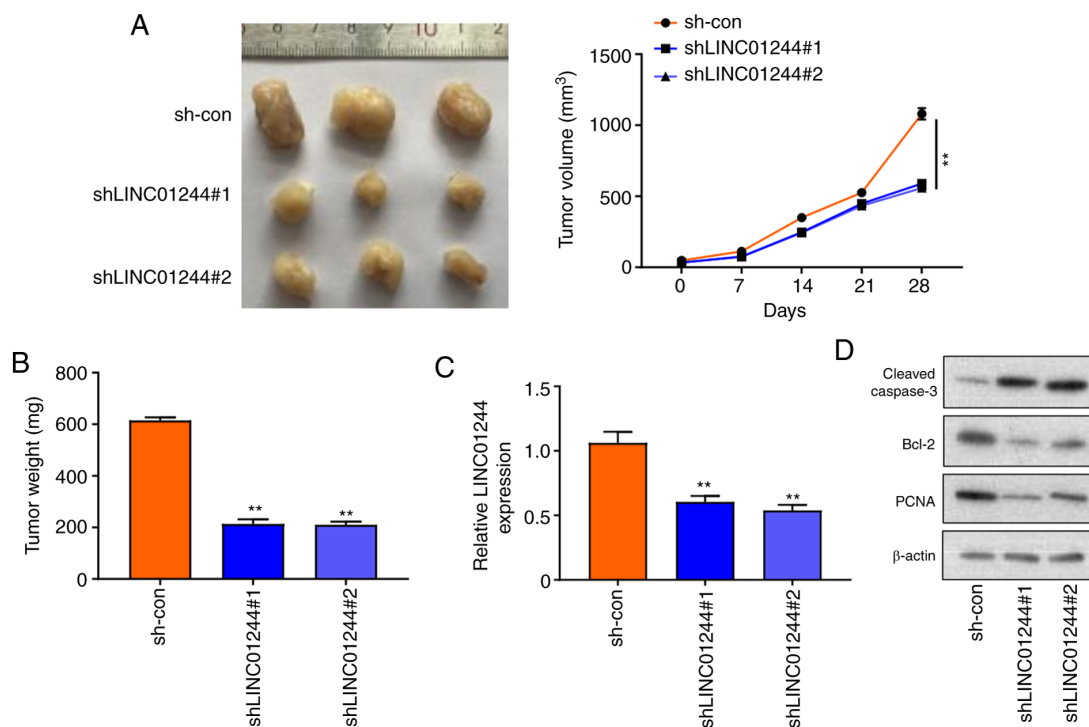


Figure S3. Representative western blots and quantification of proliferation- and apoptosis-associated protein expression levels in HEC1A and Ishikawa cells transfected with sh-con, shLINC01224#1 or shLINC01224#1 + miR-485-5p inhibitor.  $\beta$ -actin was used as the loading control. Data are representative of three independent experiments and shown as the mean  $\pm$  SD. \* $P$ <0.05, \*\* $P$ <0.01. sh, short hairpin; con, control; miR, microRNA; PCNA, proliferating cell nuclear antigen.

