

Figure S1. Silencing of RHPN1-AS1 inhibits the viability of ovarian cancer cells. (A) The transfection efficiency of si-RHPN1-AS1 in ovarian cancer cells. (B) The cell viability was detected by CCK-8 assay in the ovarian cancer cells transfected with si-RHPN1-AS1. * $P < 0.05$, ** $P < 0.001$ compared with the blank control group. Blank, blank control. RHPN1-AS1, Rho GTPase binding protein 1 antisense RNA1.

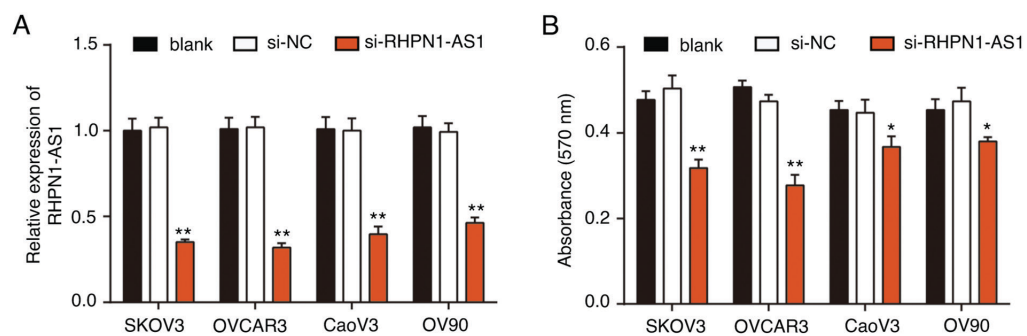


Figure S2. si-TOP2A inhibits the expression of TOP2A protein. ** $P < 0.001$ compared with the blank control group. Blank, blank control. *TOP2A*, DNA topoisomerase II α ; RHPN1-AS1, Rho GTPase binding protein 1 antisense RNA1.

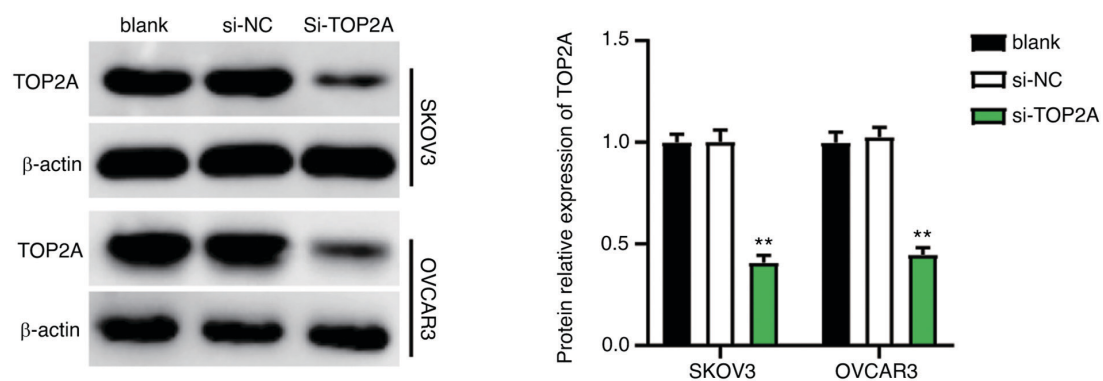


Table SI. Primer sequences of the RHPN1-AS1 silencing plasmids, miR-6884-5p inhibitor and TOP2A silencing plasmids.

Name	Sequence (5'-3')
si-lnc-F	GAACUACCUGUUUGUAGAACU
si-lnc-R	UUCUACAAACAGGUAGUUCUG
miR-6884-5p inhibitor	GCCCAUCACCUUCCGUCUCUC
si-RNA-F	GGUGUUGGAUUAUCUAAGAGA
si-RNA-R	UCUUAGAAUAUCCAACACCGU
F, forward; R, reverse; si-lnc, RHPN1-AS1 silencing plasmids; si-RNA, TOP2A silencing plasmids.	