

Figure S1. Immunohistochemistry of surgical specimen showing HER2 overexpression (3+); magnification, x20.

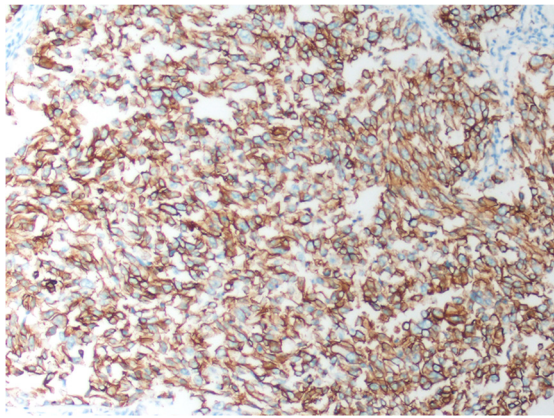


Table SI. Treatment regimen summary.

| Line | Regimen | Cycles, no. | Best response | Time to progression (months) |
|------|-----------------------------------|-------------|---------------------|------------------------------|
| 1 | Surgery | 1 | Progressive disease | 2 |
| | Pemetrexed + platinum | 2 | | |
| 2 | Abraxane + platinum + bevacizumab | 1 | Progressive disease | 1 |
| 3 | Chemotherapy + lapatinib | 5 | Partial response | 5 |
| | Chemotherapy + trastuzumab | 1 | | |
| 4 | Chemotherapy + pyrotinib | 2 | Complete response | 6 |
| | Pyrotinib | 4 | | |
| 5 | Afatinib | 1 | Progressive disease | 1 |
| 6 | Pyrotinib | 1 | Progressive disease | 1 |
| 7 | Pyrotinib + anlotinib + nivolumab | 6 | Stable disease | 6 |