

Figure S1. Effects of CT on the apoptosis of ARPE-19 cells. ARPE-19 cells were cultured with different concentrations of CT (5, 10 or 20  $\mu\text{M}$ ) for 24 h. Cell apoptosis was analyzed using flow cytometry. Data are presented as the mean  $\pm$  the standard error of the mean. CT, cryptotanshinone.

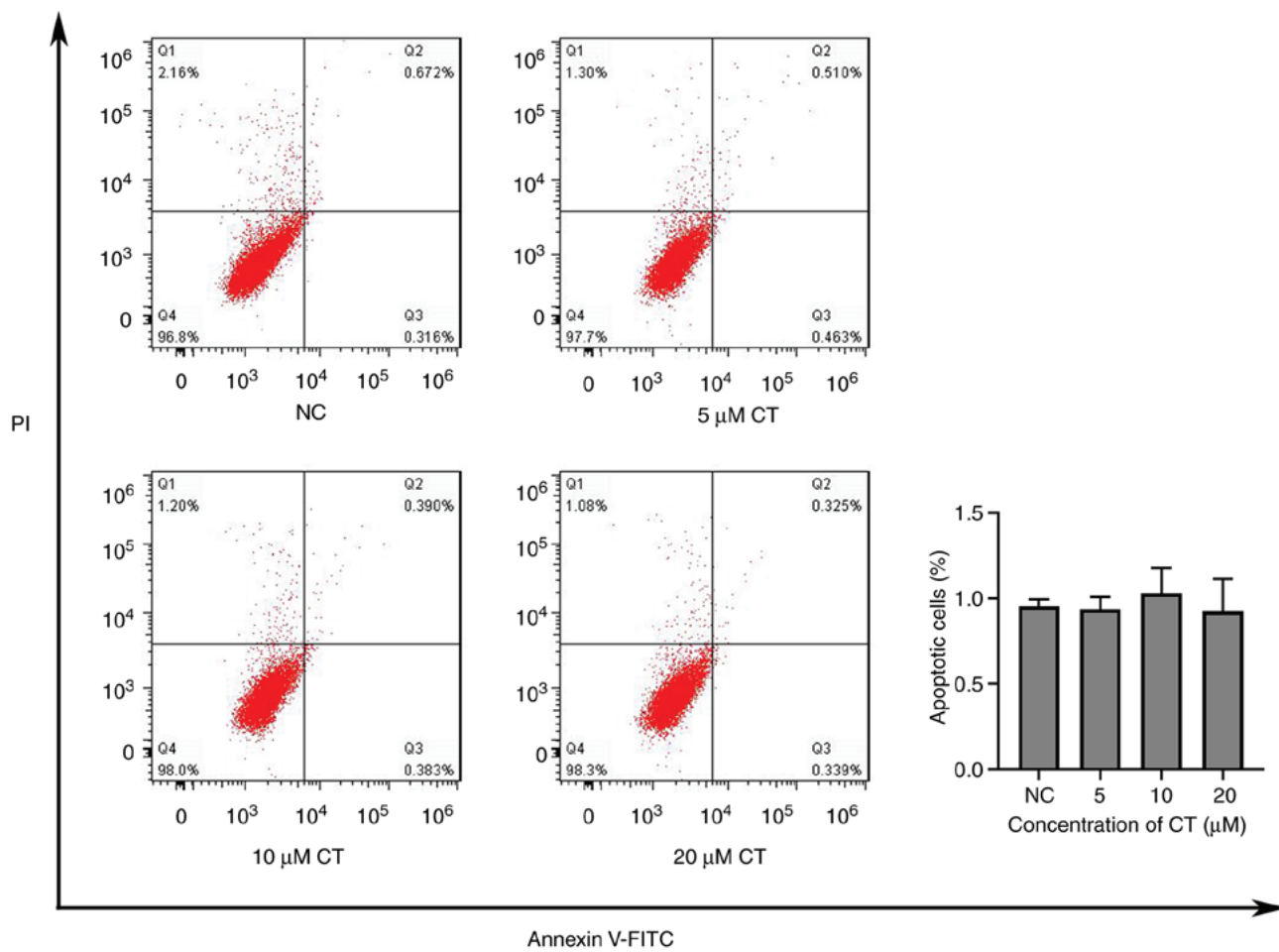


Figure S2. Effects of CT on Bax, Bcl-2, HIF-1 $\alpha$  and VEGF protein expression in ARPE-19 cells. ARPE-19 cells were cultured with different concentrations of CT (5, 10 or 20  $\mu$ M) for 24 h. Cell protein expression was detected via western blotting. Data are presented as the mean  $\pm$  the standard error of the mean. CT, cryptotanshinone.

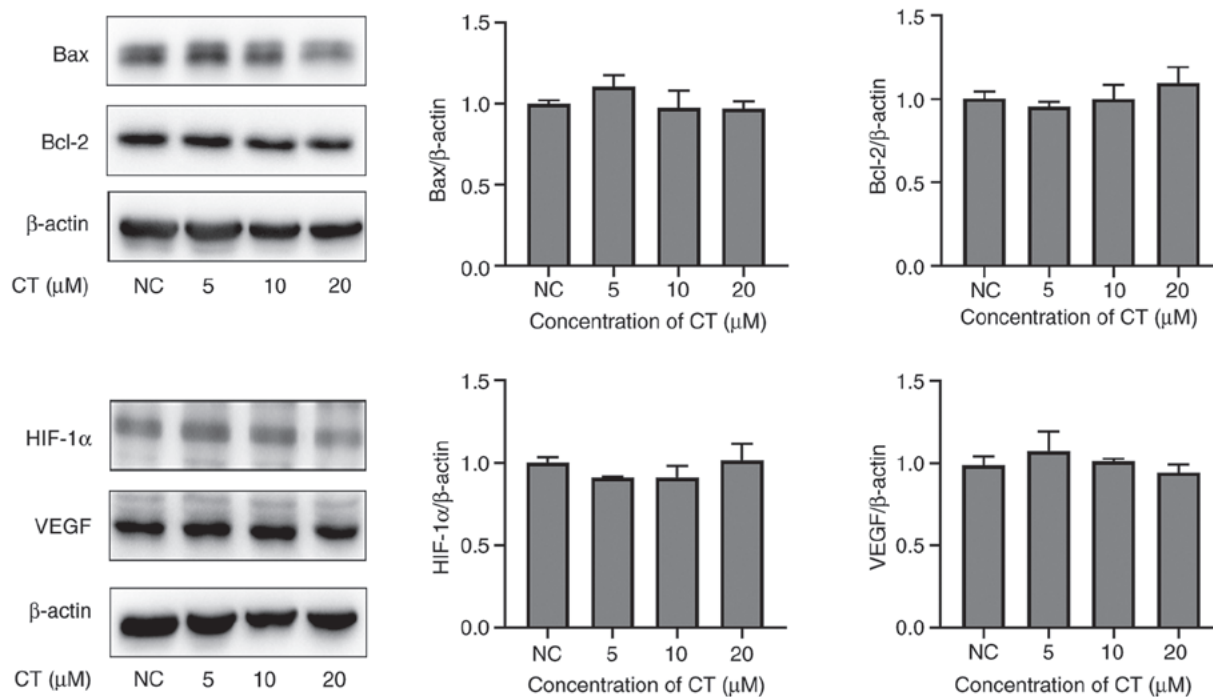


Figure S3. Effects of CT on transcription level of HIF-1 $\alpha$ , VEGF and inflammatory cytokines in ARPE-19 cells. ARPE-19 cells were cultured with different concentrations of CT (5, 10 or 20  $\mu$ M) for 12 h. Cell gene expression was examined via reverse transcription-quantitative PCR. Data are presented as the mean  $\pm$  the standard error of the mean. CT, cryptotanshinone.

