

Figure S1. Localization of AREL1 and MTX2. 293T cells were transfected with both V5-tagged AREL1 and GFP-tagged MTX2. After 36 h, cells were fixed and visualized by indirect immunofluorescence using the anti-Flag antibody followed by rhodamine-conjugated secondary antibody. DAPI was used to visualize nuclei. Normal IgG was used as a negative control. Each column represents the same field of cells as visualized under the green (MTX2-GFP, top left), red (Flag-AREL1, top right) and blue (DNA, bottom left) filters. Scale bar, 5 μ m. AREL1, apoptosis-resistant E3 ubiquitin protein ligase 1; MTX2, Metaxin 2.

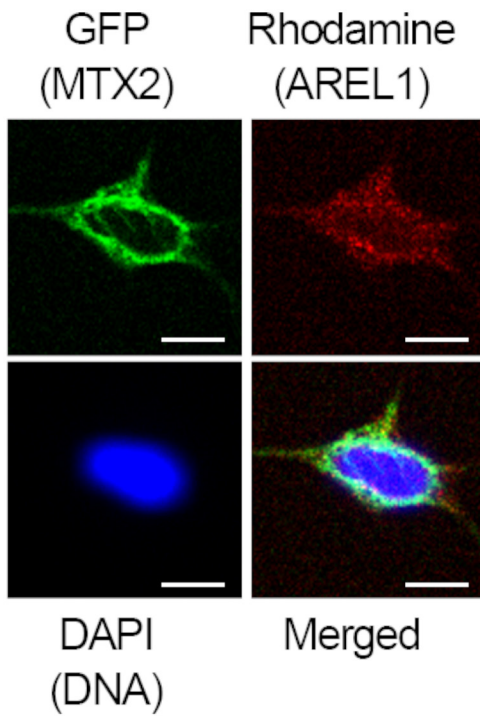


Figure S2. Necrotic death of L929 cells after treatment with TNF. L929 cells were transfected with AREL1 and then treated with TNF and caspase inhibitors Z for 4 h. Scale bar, 100 μ m
AREL1, apoptosis-resistant E3 ubiquitin protein ligase 1; Cntl, control; Z, zVAD-fmk.

