

Figure S1. Optimization of the coating concentration in the test line of the uncropped Fig. 2G. C, quality control line; T, detection line; H-FABP, heart-type fatty acid-binding protein.

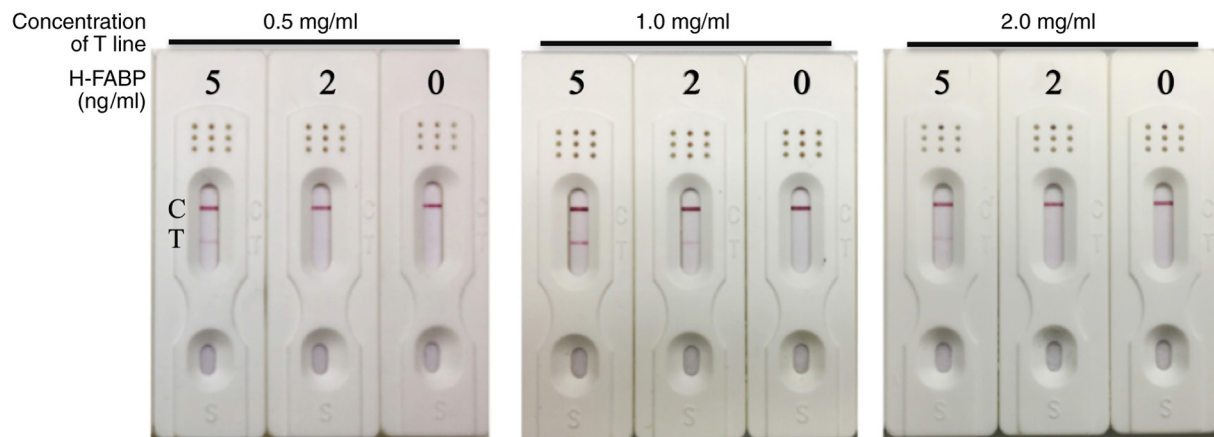


Figure S2. Plasma and whole-blood sensitivity test results in the uncropped Fig. 3A. C, quality control line; T, detection line; H-FABP, heart-type fatty acid-binding protein.

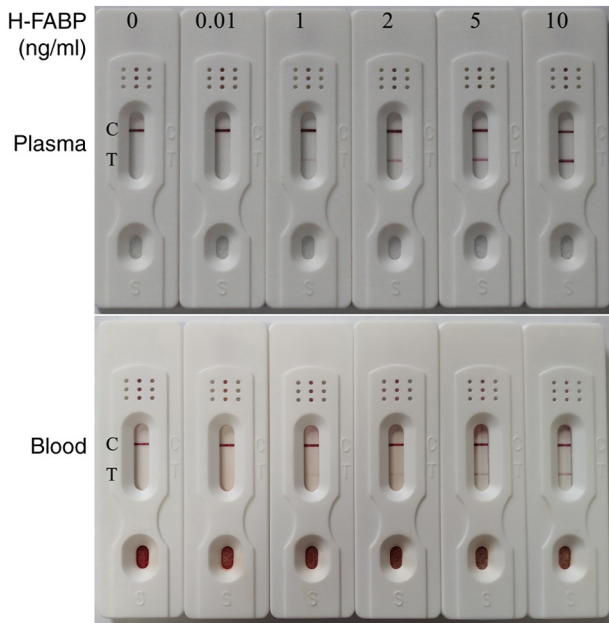


Figure S3. Specificity test results by the H-FABP kit from the uncropped Fig. 3B. C, quality control line; T, detection line; H-FABP, heart-type fatty acid-binding protein; cTnI, cardiac troponin I; Myo, myoglobin; CK-MB, creatine kinase-Mb.

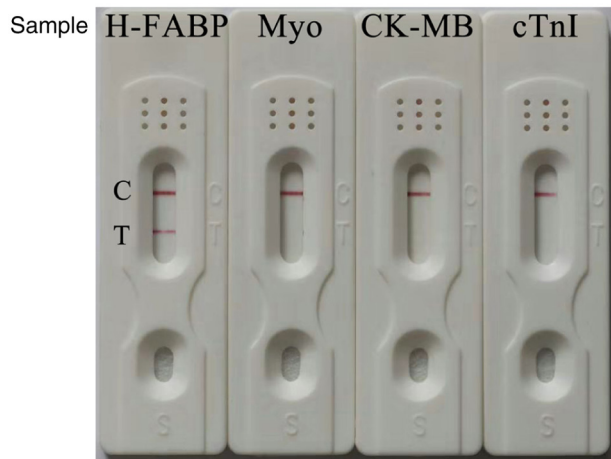


Figure S4. Stability test results at 4°C, room temperature and 40°C for the H-FABP kit from the uncropped Fig. 3C. C, quality control line; T, detection line; H-FABP, heart-type fatty acid-binding protein.

