

Figure S1. Effect of Wnt3A-induced EGFR transactivation. Serum-starved SCC12 and SCC13 cells were stimulated with or without Wnt3A (20 ng/ml) for 30 min. Western blot analyses were performed with the indicated antibodies. Representative band intensity was quantified using ImageJ software. The data represent the mean \pm SD of three independent experiments. ***P<0.001 based on the Student's t-test.

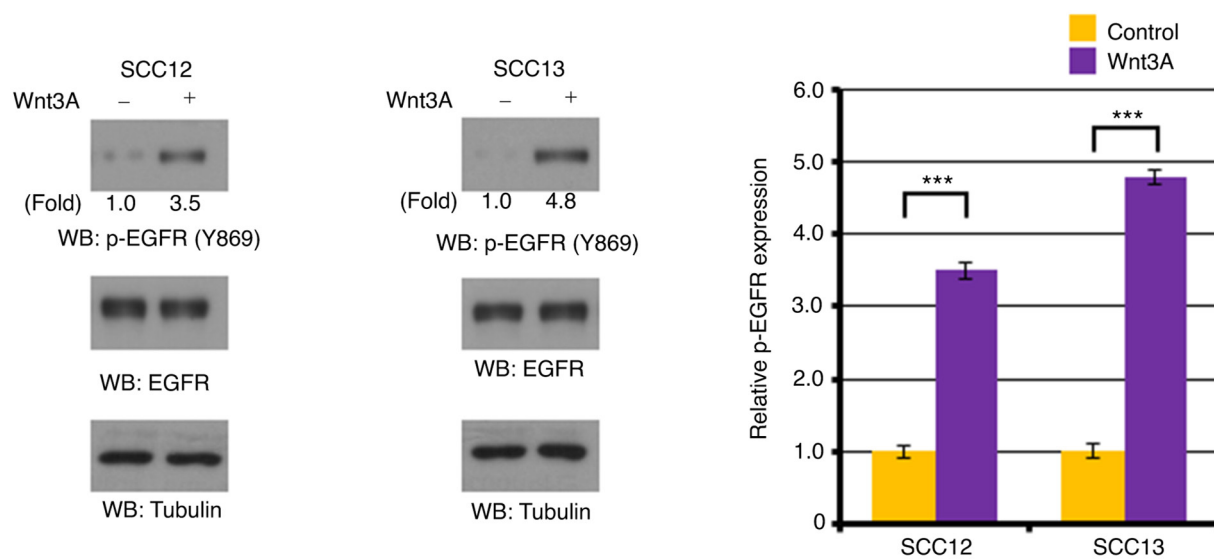


Figure S2. Effect of Wnt3A on PFKP expression. Serum-starved LN18, MDA-MB-231, SCC12 and SCC13 cells were stimulated with or without Wnt3A (20 ng/ml) for the indicated periods of time. Western blot analyses were performed with the indicated antibodies. Representative band intensity was quantified using ImageJ software. The data represent the mean \pm SD of three independent experiments. ***P<0.001 based on one-way ANOVA with Tukey's post hoc test. PFKP, phosphofructokinase 1 platelet isoform.

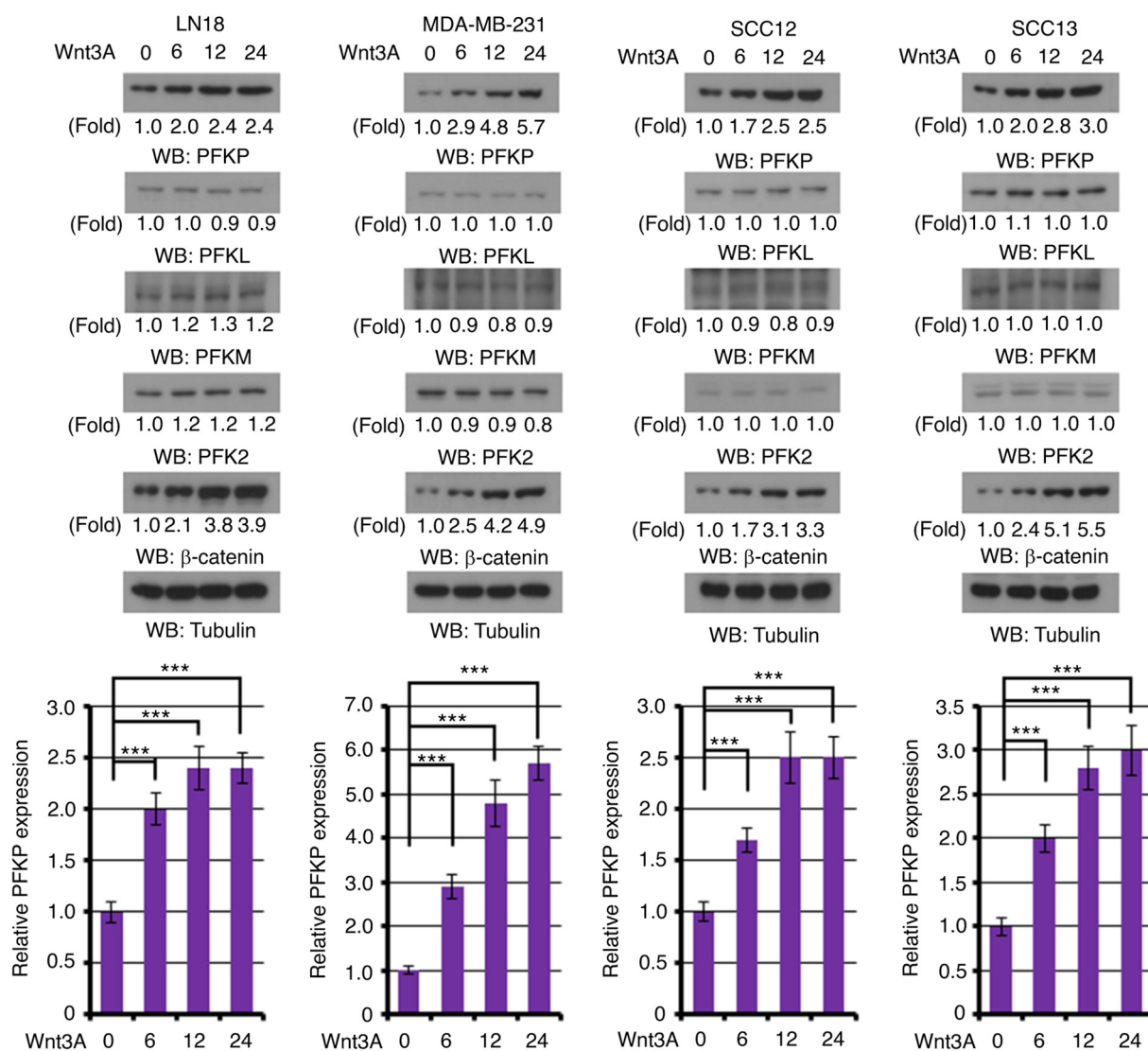


Figure S3. Effect of Wnt3A or PFKP on LDH enzyme activity and its expression. A431 cells were transfected with PFKP shRNA or control shRNA. A431 cells stably expressing PFKP shRNA or control shRNA with or without Wnt3A were used to analyze LDH enzymatic activity and LDHA expression. The data represent the mean \pm SD of three independent experiments. Western blot analyses were performed with the indicated antibodies. PFKP, phosphofructokinase 1 platelet isoform; LDH, lactate dehydrogenase; LDHA, lactate dehydrogenase A.

