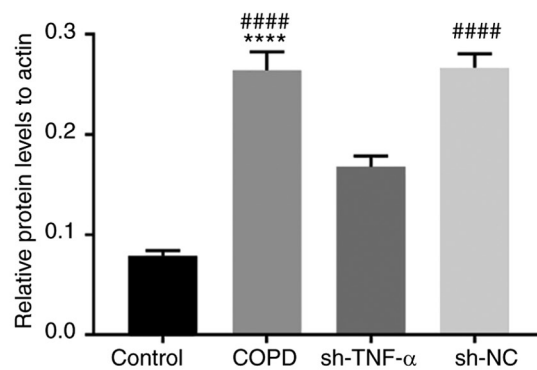
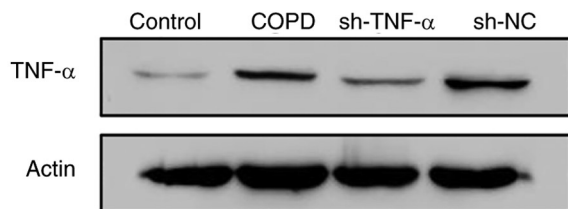
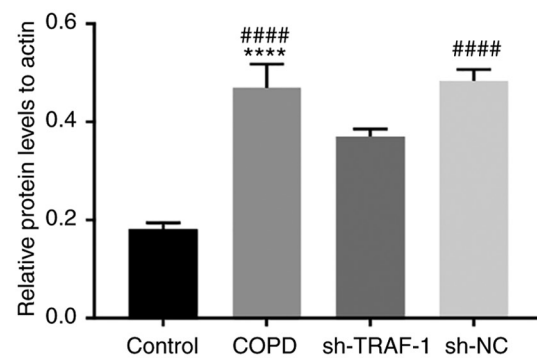
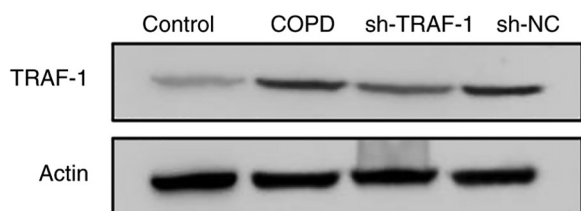


Figure S1. Transfection efficiencies of (A) sh-TNF- α , (B) sh-TRAF-1 and (C) sh-SOCS3 by western blotting. ****P<0.0001, vs. Control group; #####P<0.0001, vs. sh-TNF- α group/sh-RNA group. TNF, tumor necrosis factor; sh-, short interfering RNA; NC, negative control; COPD, chronic obstructive pulmonary disease.

A



B



C

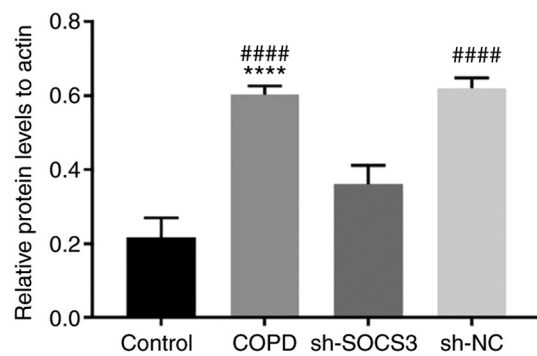
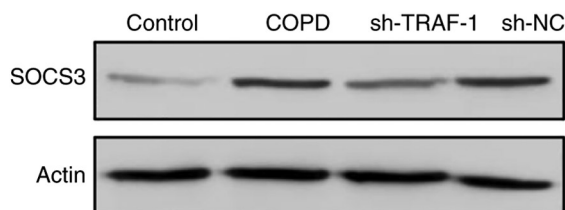


Figure S2. Signalling pathway selection. The Kyoto Encyclopedia of Genes and Genomes database (<https://www.genome.jp/kegg/kegg2.html>) was used to identify TNF signalling pathway, and the MAPK signalling pathway as well as downstream signalling molecules (TRAF1 and SOCS3) were chosen. TNF, tumor necrosis factor.

TNF SIGNALING PATHWAY

