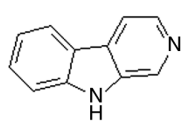
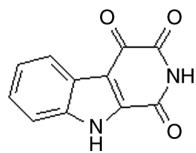


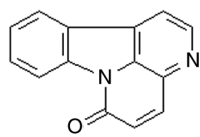
Figure S1. Different basic structures of *Picrasma quasidodes* (D. Don) Benn (1) (2)  $\beta$ -Carboline alkaloids, (3) (4) (5) Canthinone alkaloids, (6) (7) (8) (9) Dimeric alkaloids, (10) (11) (12) Bitterelements, (13) (14) Triterpenes basic structure.



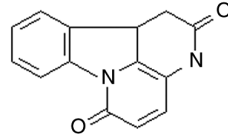
(1)



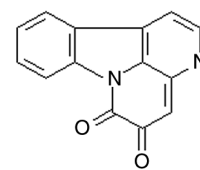
(2)



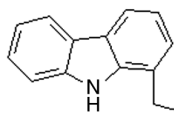
(3)



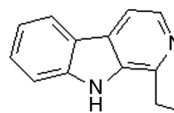
(4)



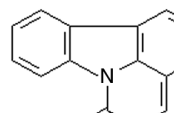
(5)



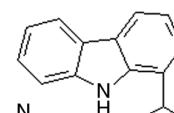
(6)



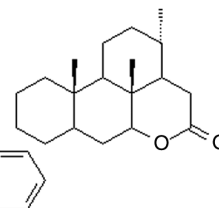
(7)



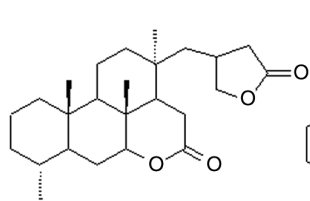
(8)



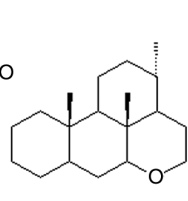
(9)



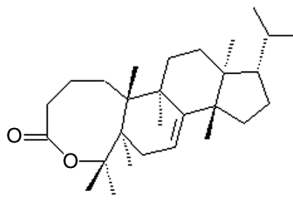
(10)



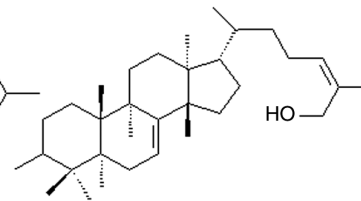
(11)



(12)



(13)



(14)