

Figure S1. Box-and-whisker plot; interquartile range of recurrence-free survival.

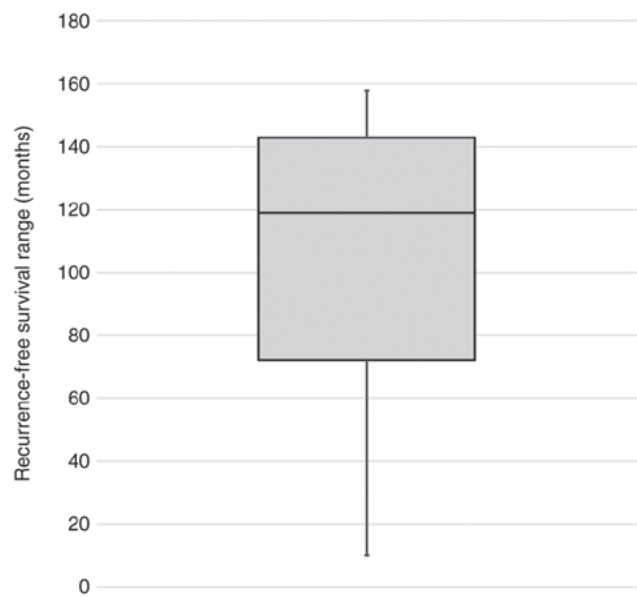


Figure S2. Survival curves of the patients with luminal A- and B-like breast cancers. A significant difference in survival rate was observed between the luminal A- and B-like subtypes.

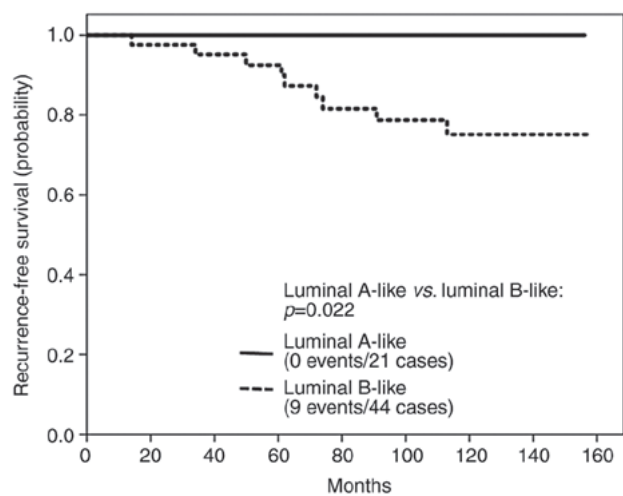


Table SI. Results of the multivariate analysis of the clinicopathological factors that influence breast cancer recurrence.

Characteristics	P-value
Tumor-infiltrating lymphocyte count Low vs. intermediate/high	0.98
Nuclear grade 1-2 vs. 3	0.30
Ki67 Low ( $\leq 10\%$ ) vs. high ( $> 10\%$ )	0.11
Progesterone receptor Negative vs. positive	0.04
Pathological T status T1-2 vs. T3-4	0.26
Nodal status Negative vs. positive	0.93