

Figure S1. Purity of GM2 isolated from *S. chinensis* as determined by high-performance liquid chromatography with diode-array detection analysis. (A) Dichloromethane fraction obtained from ethanolic extract of *S. chinensis*. (B) Standard solution of GM2. (C) GM2 isolated from dichloromethane fraction. GM2, gomisin M2; *S. chinensis* Schisandra chinensis (Turcz). Baill.

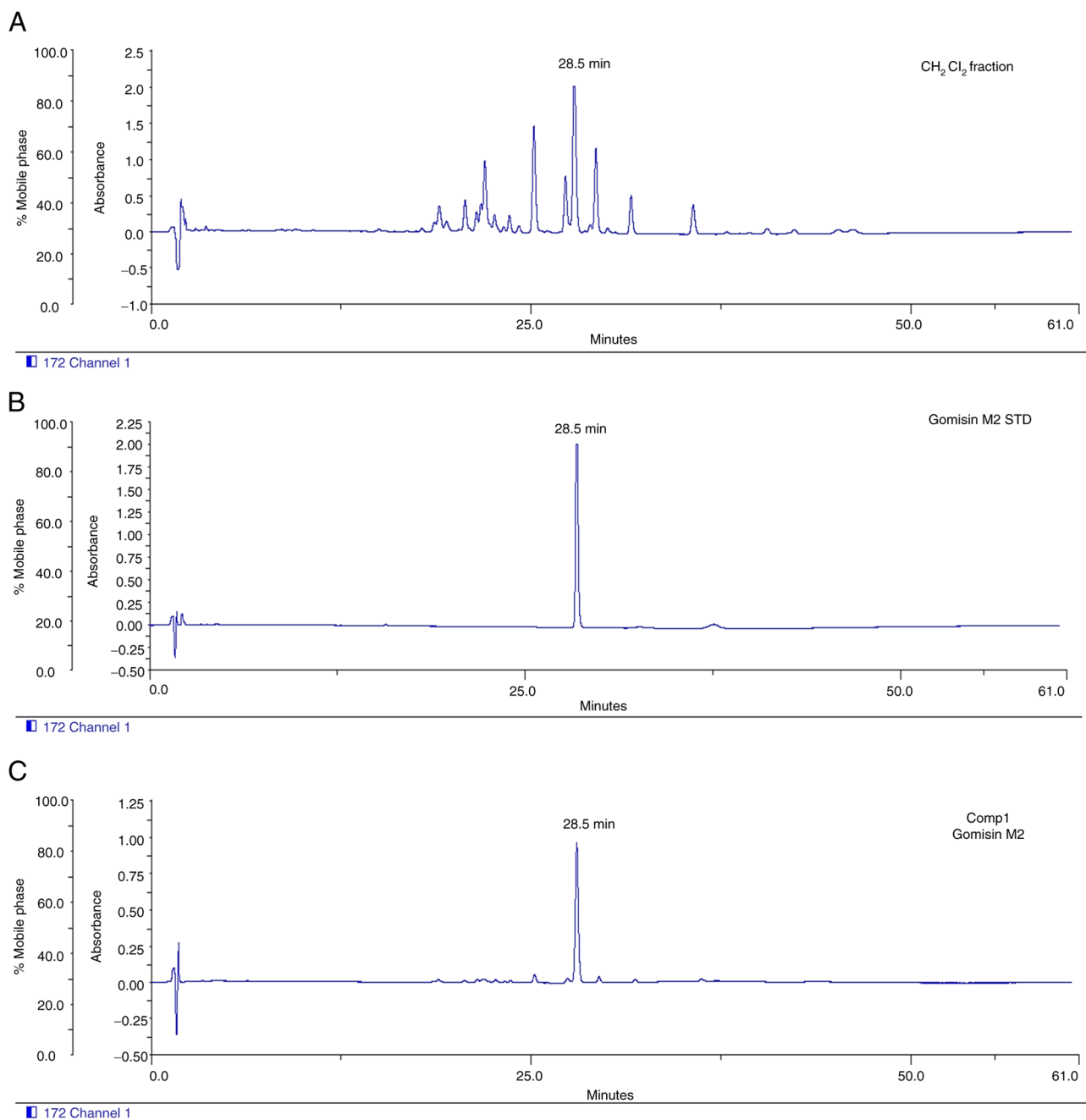


Figure S2. Effects of GM2 on characteristics of psoriasis and mast cell infiltration in IMQ-induced mice. (A) Representative photographs of the skin of the mice. (B) Toluidine blue staining was performed to determine the number of mast cells. The number of mast cells was counted from at least three random fields per tissue section (magnification, x200; scale bar, 100 μ m). * P <0.05 vs. IMQ only group. IMQ, imiquimod; GM2, gomisin M2; Dexa, dexamethasone.

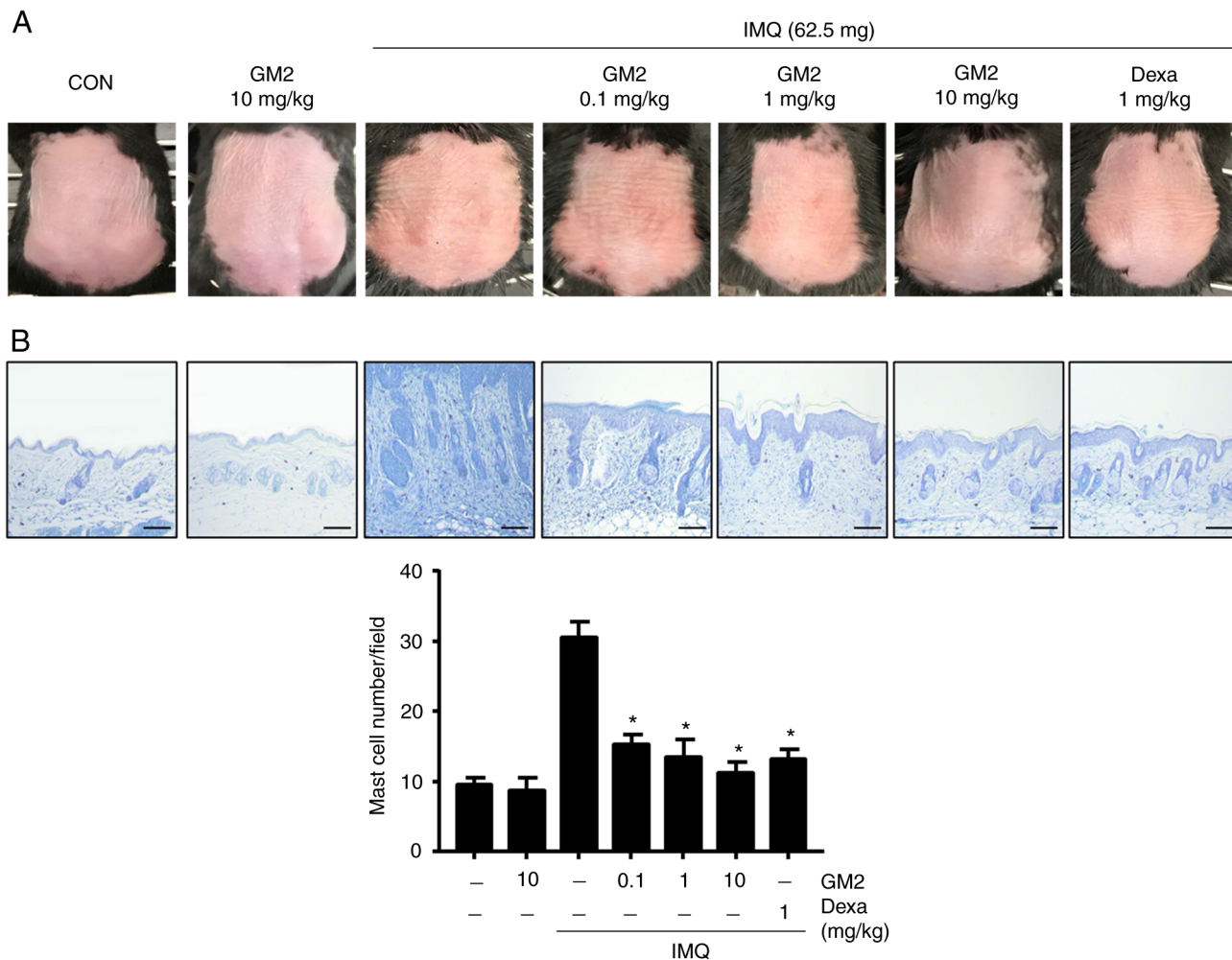


Figure S3. Effects of GM2 on infiltration of CD4⁺ cells in dorsal skin sections of mice. Representative microphotographs show CD4⁺ cells through immunohistochemical analysis (magnification, x200; scale bar, 100 μ m). The infiltration of CD4⁺ cells into the skin was increased by IMQ, however, it was reduced by GM2. IMQ, imiquimod; GM2, gomisin M2; Dexa, dexamethasone.

