

Figure S1. EMX2 protein expression in 36 matched pairs of esophageal adenocarcinoma and adjacent normal tissues. Frozen tissues were analyzed, using western blot analysis, for EMX2. GAPDH was used as a loading control. EMX2, empty spiracles homeobox 2; T, tumor; N, adjacent normal tissues.

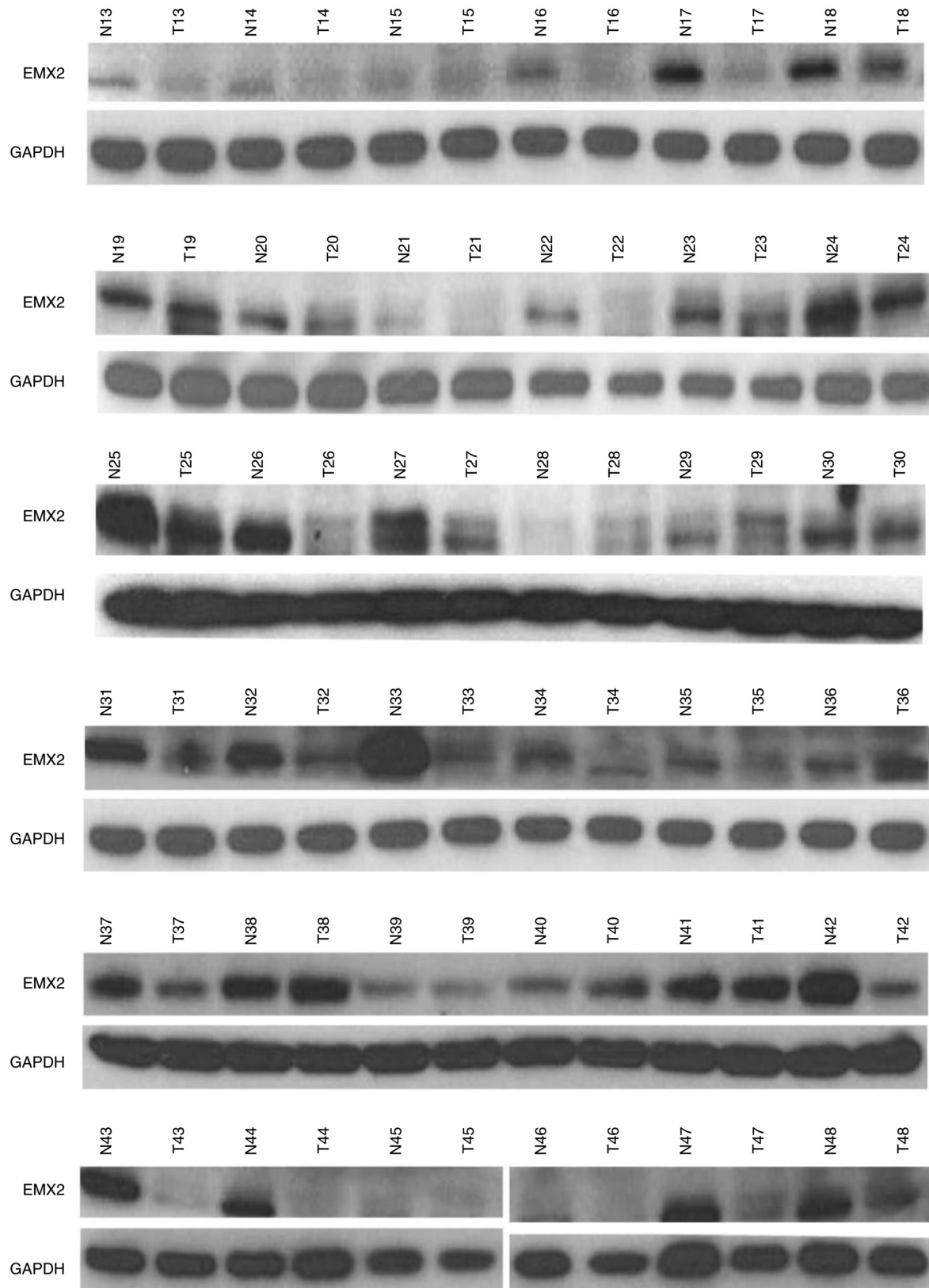


Table SI. Characteristics of 48 EAC patients.

Characteristics	Patient Cohort # (%)
Number of patients	48
Age (years)	67.5±10.6
Males	29 (60.4)
Females	19 (39.6)
Smoking history	
Yes	22 (45.8)
No	18 (37.5)
Unknown	8 (16.7)