

Figure S1. RhoA expression post-transfection. RhoA expression in untreated and NC and RhoA plasmid groups in (A) KG-1 and (B) Kasumi-1 cells following transfection. \*\*\* $P < 0.001$ . RhoA, ras homolog family member A; NC, negative control.

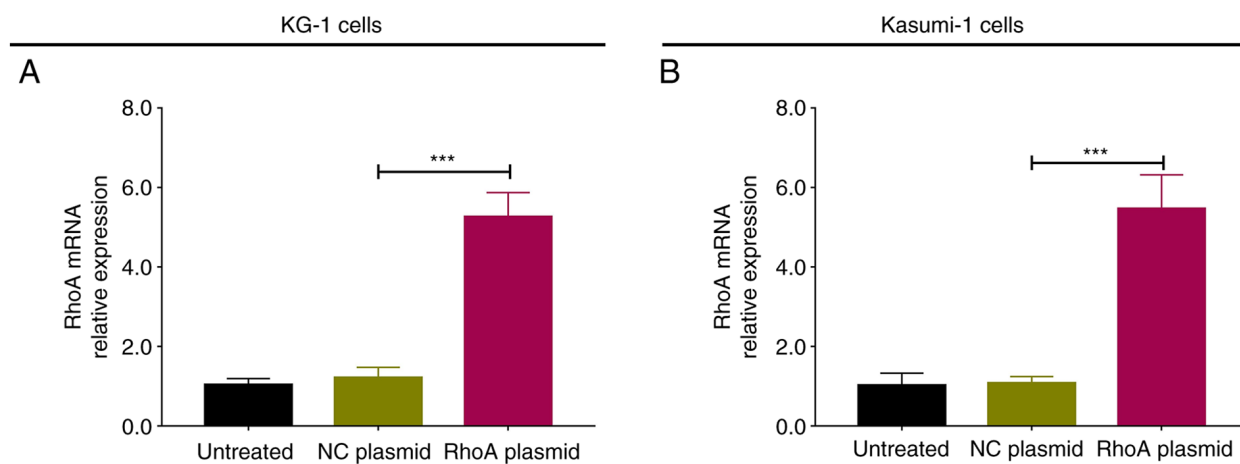


Table SI. Antibody information.

Antibody	Company	Cat. no.	Dilution
Primary antibody			
Rabbit anti-KIF2A	Abcam (UK)	ab197988	1:1,000
Rabbit anti-P-PI3K	Invitrogen (USA)	ab182651	1:3,000
Rabbit anti-PI3K	Invitrogen (USA)	ab191606	1:2,000
Rabbit anti-AKT	Invitrogen (USA)	MA5-14916	1:1,000
Rabbit anti-P-AKT	Invitrogen (USA)	OMA1-03061	1:1,000
Rabbit anti-RhoA	CST (USA)	# 2117S	1:1,000
Rabbit anti-ROCK1	CST (USA)	# 4035S	1:1,000
Rabbit anti- $\beta$ -actin	Thermo (USA)	PA1-16889	1:10,000
Secondary antibody			
Goat anti-Rabbit IgG (H+L) secondary, HRP	Thermo (USA)	# 31460	1:10,000