

Figure S1. Effect LMP-1 on cell viability, apoptosis and inflammatory factor release in CHON-001 cells. CHON-001 cells were transfected with pcDNA3.1-LMP-1 or pcDNA3.1 for 24 h. (A) MTT assay was used to assess cell viability. (B) Flow cytometry was performed to determine the number of apoptotic cells. (C) Quantification of the number of apoptotic cells. The release of (D) TNF- α , (E) IL-6 and (F) IL-8 was assessed using ELISA. **P<0.01 vs. pcDNA3.1. LMP-1, LIM mineralization protein-1.

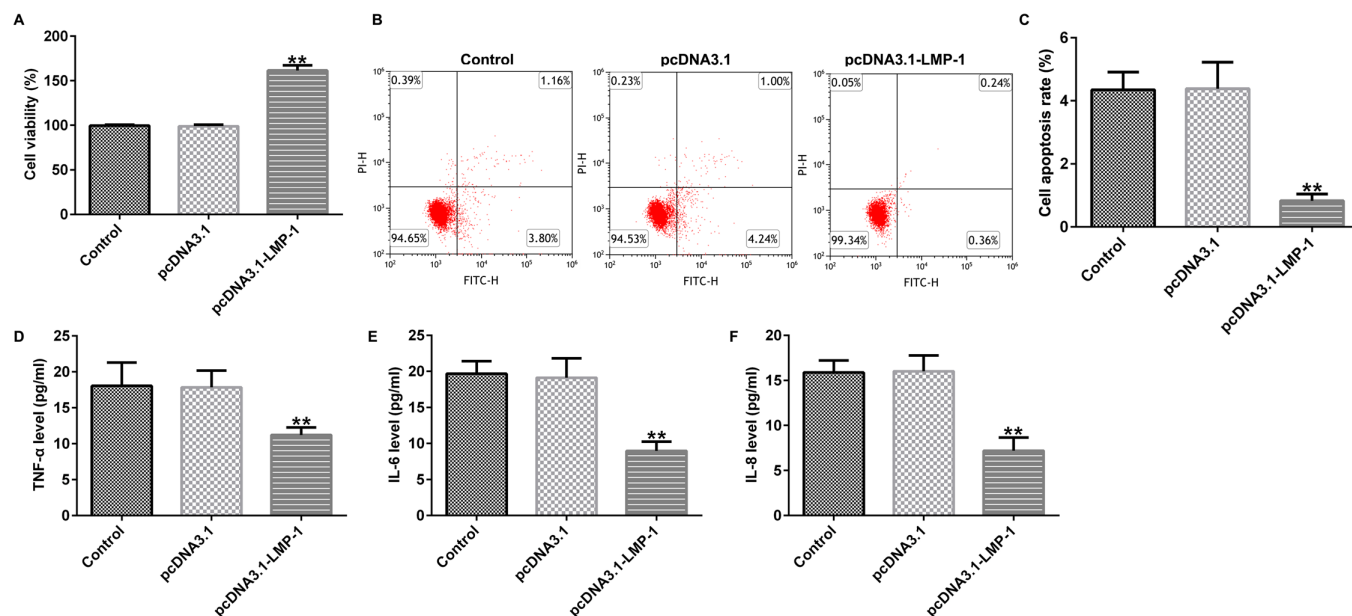


Figure S2. Effect of LMP-1 silencing on cell viability, apoptosis and inflammatory factor release in CHON-001 cells. CHON-001 cells were transfected with NC-siRNA or LMP-1-siRNA for 24 h. (A) MTT assay was used to assess cell viability. (B) Flow cytometry was performed to determine the number of apoptotic cells. (C) Quantification of the number of apoptotic cells. The release of (D) TNF- α , (E) IL-6 and (F) IL-8 was assessed using ELISA. ** $P < 0.01$ vs. NC-siRNA. LMP-1, LIM mineralization protein-1; si, small interfering; NC, negative control.

