

Figure S1. Cardiomyocytes under transmission electron microscopy. Cardiomyocytes in the (A) Sham and (B) MI groups. Scale bar, 10  $\mu$ m. MI, myocardial ischemia.

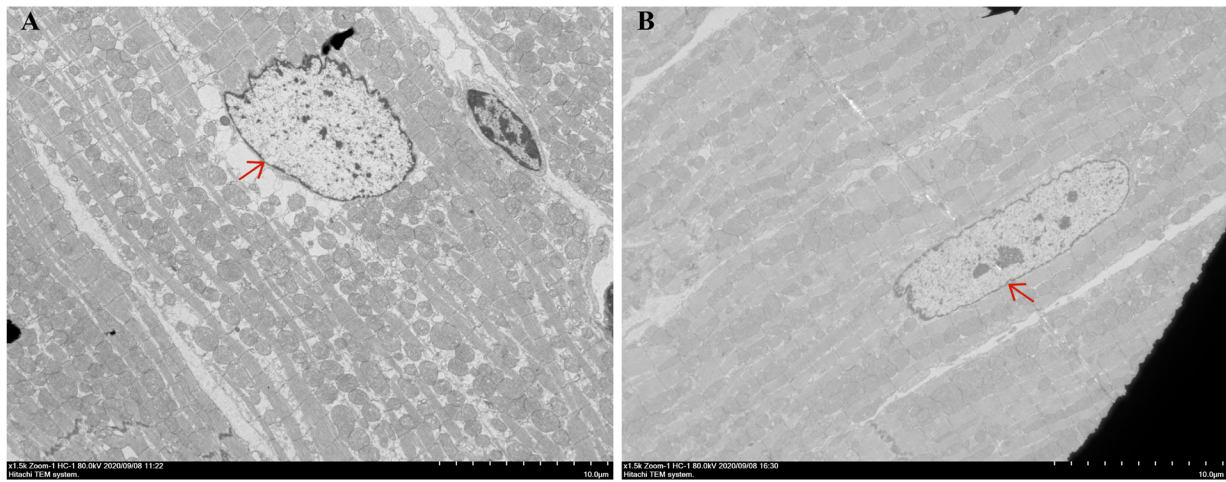


Figure S2. Original uncropped western blots shown in for Fig. 2A. VDAC1, voltage-dependent anion-selective channel protein 1.

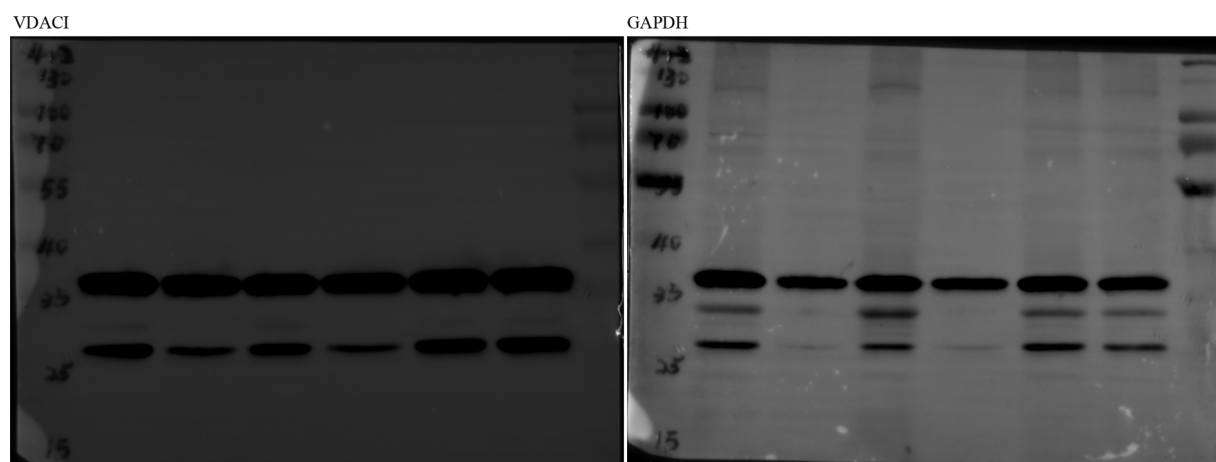


Figure S3. Differentially expressed protein analysis. Clustering heatmap. MI, myocardial ischemia. FC, fold change.

