

Figure S1. Graph of fluorescence emission against serial dilutions of FITC-conjugated UCLA1 and CSIR1.1 aptamers. Buffer was used as a negative control. The conjugated aptamers were filtered through the 3,000 molecular weight cut-off vivaspin columns to remove unbound FITC. FITC, fluorescein isothiocyanate.

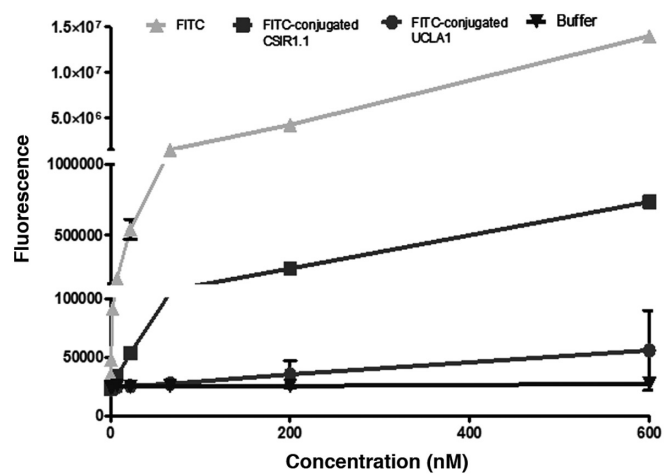


Figure S2. Representative dot plots and corresponding histogram plots showing binding of FITC-conjugated CSIR1.1 to gp120 on latex beads. (A) Coupled beads alone; (B) coupled beads stained with FITC only; (C) coupled beads stained with conjugated aptamer; (D) uncoupled beads stained with FITC only; (E) uncoupled beads stained with conjugated aptamer. FITC, fluorescein isothiocyanate; FSC, forward scatter.

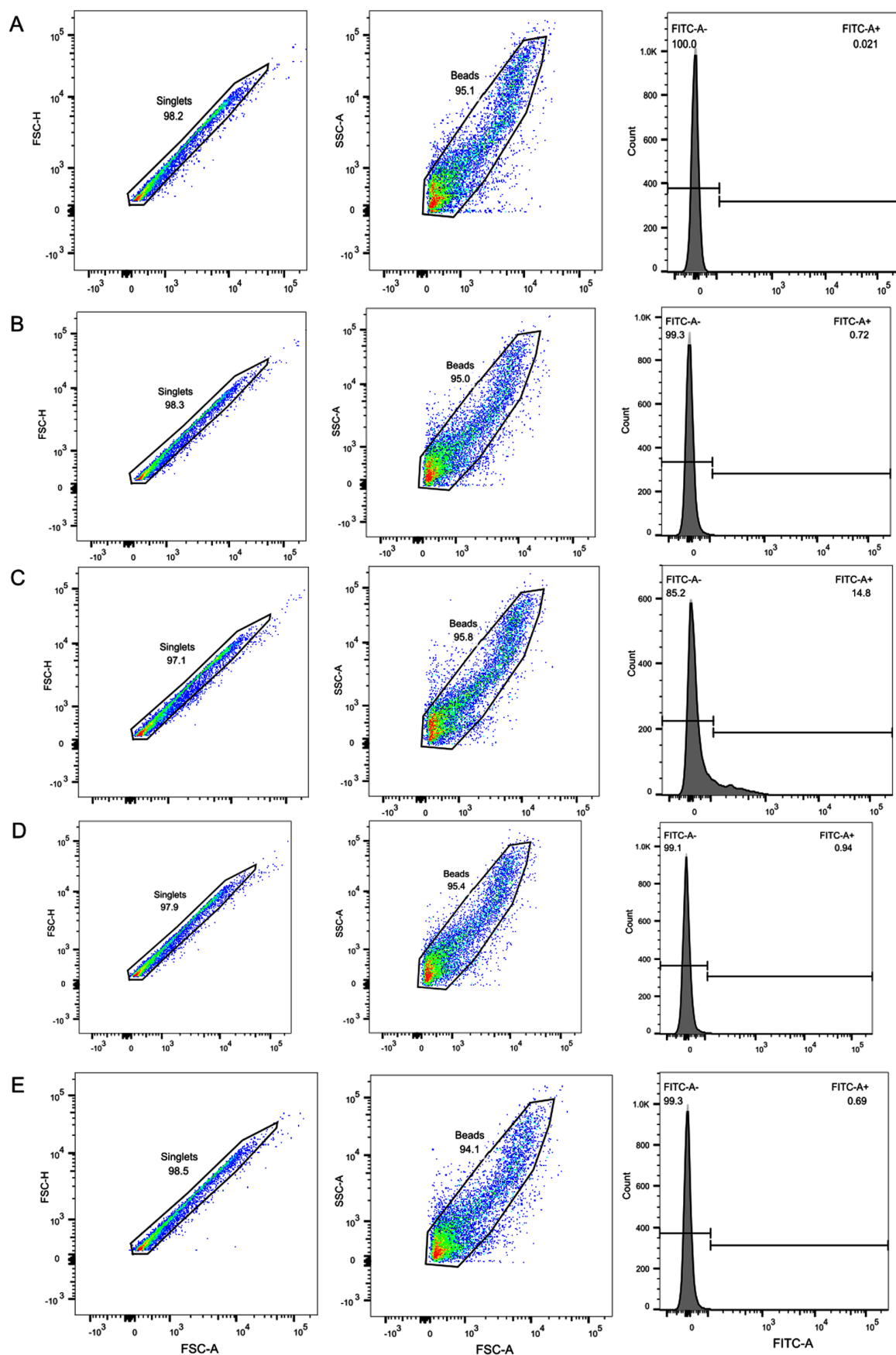


Figure S3. Optimization of the commercial biotinylated anti-gp120 antibody for detection of gp120. HIV-1 subtype C ZM53M.PB12 was captured with the 10E8 mAb, followed by the addition of biotin-conjugated anti-gp120 antibody. This was later detected using different dilutions of FITC-conjugated streptavidin. The experiment was repeated two times. FITC, fluorescein isothiocyanate; strept, streptavidin.

