

Figure S1. Niclosamide does not affect expression of cytochrome *c*. The T-ALL cells were treated with different doses of niclosamide for 24 h, and the expression of cytochrome *c* in the cytosolic and mitochondrial fractions were assessed by western blot analysis in (A) Jurkat and (B) CCRF-CEM cells. β -actin protein was used in these experiments as the loading control. The results are expressed as mean \pm SEM.

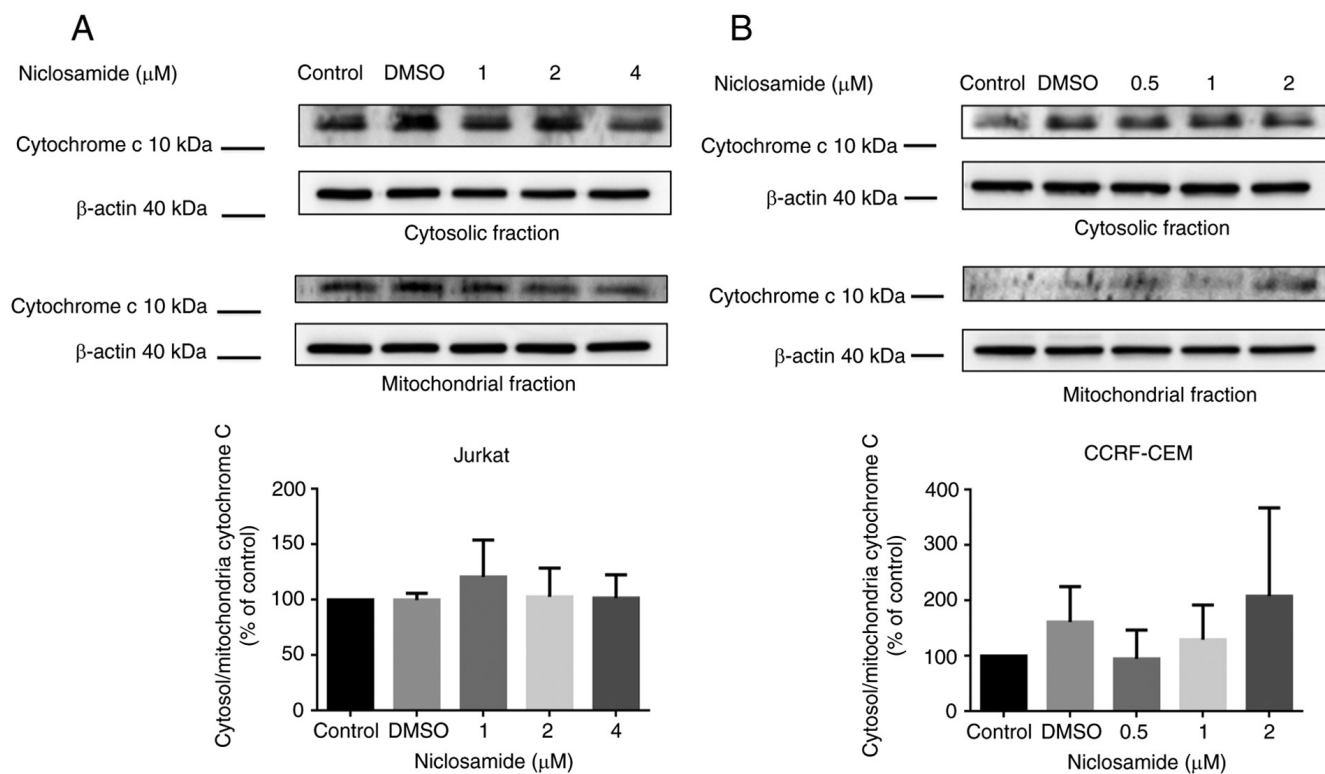


Figure S2. Survival curves for the experimental mice.

