

Figure S1. Images of the pole test. MPTP, 1-methyl-4-phenyl-1,2,3,6-tetrahydropyridine.

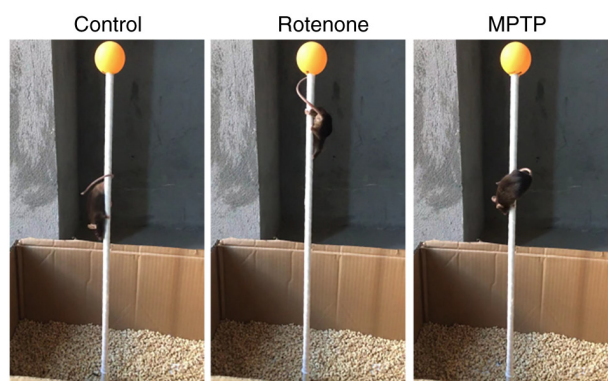


Figure S2. Images of the rotarod test. MPTP, 1-methyl-4-phenyl-1,2,3,6-tetrahydropyridine.

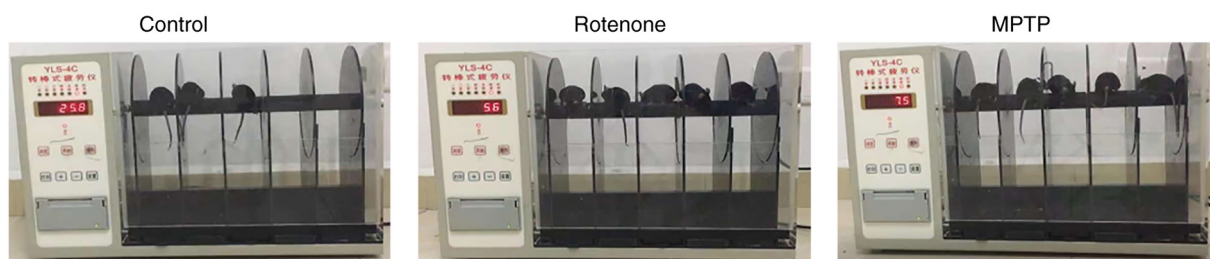


Figure S3. TH expression in the SNpc, VTA and striatum of the two control groups. (A) Immunohistochemical staining for TH in the SNpc. TH protein is expressed in the cytoplasmic regions of dopaminergic neurons; the inner circle area represents the SNpc; the outer circle area in brown represents the VTA. Magnification, x40. Quantitative analysis of the number of surviving neurons in the (B) VTA and (C) the SNpc. (D) Immunohistochemical staining for TH in the striatum. Magnification, x40. (E) Quantitative analysis of TH optical density in the striatum. ns, no significant difference; VTA, ventral tegmental area; SNpc, substantia nigra pars compacta; TH, tyrosine hydroxylase; CMC, carboxymethyl cellulose.

